

PRODUCT CATALOGUE | 2025



THERMAL INSULATION
SYSTEMS



INTERNAL
PLASTERING



EXTERNAL
RENDERING



DRY
LINING

Table of Contents

02 | **Işık Group** at a glance

07 | Brand spotlight: **Lenix**

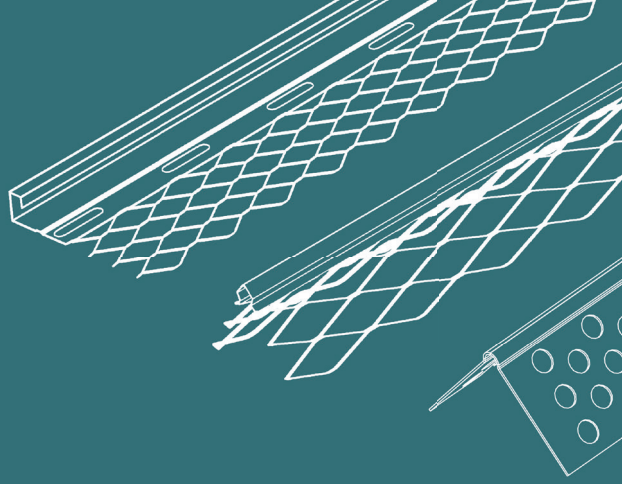
12 | **Dry lining** beads

34 | **Internal plaster** beads

50 | **External render** beads

55 | **uPVC** beads for External & Internal use

67 | **Thermal insulation** beads



Manufacturer of Building Finishing Beads



**Efforts for Better
9.000 sqm plant,**
Gebze, Kocaeli | TÜRKİYE

Reliable Skilled Manufacturer

Crafting high-quality beads with the utmost precision and care, using only the finest materials and manufacturing techniques, just as we promise to our partners.

Loyal Partner

With over half a century of experience, we recognize the importance of the customer, mutual trust and enduring partnerships.

Good Quality & Service Provider

We embody quality in all processes and materials, strive for on-time delivery, understand customer needs, offer timely responses, and resolve complaints, all exceeding expectations.



8.000
tons of
PVC Extrusion



8.000
tons of
Metal Roll Forming



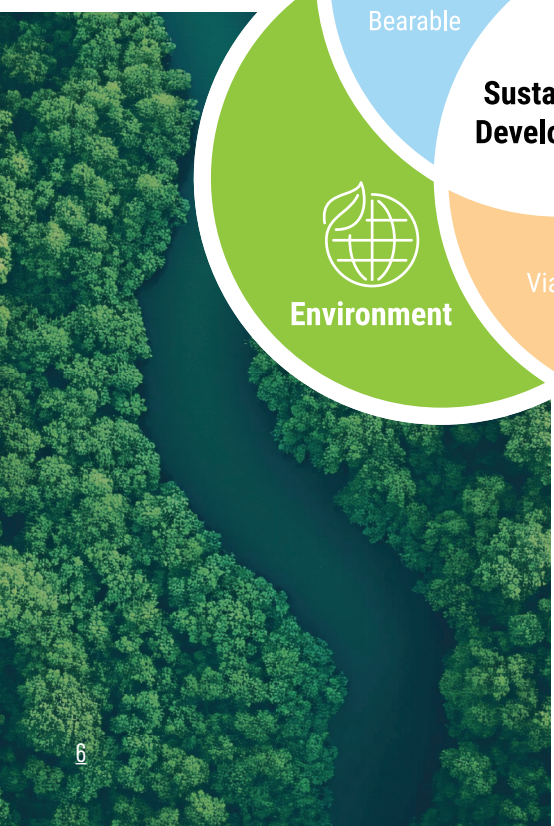
67.000.000
meters of
Mesh Beads



Manufacturing







Offering a Premium Building Finishing Beads



Dry lining

In accordance to EN 14353: Metal beads and feature profiles for use with gypsum plasterboards - Definitions, requirements and test methods.



Internal plastering

In accordance to EN 13658-1: 2005 Metal lath and beads. Definitions, requirements and test methods Part 1: Internal plastering.



External rendering

In accordance to EN 13658-2: 2005 Metal lath and beads. Definitions, requirements and test methods Part 2: External rendering.

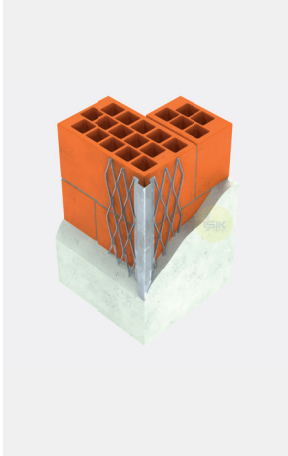


Thermal insulation systems

Designed to complement ETICS, EIFS and EWI systems.

Compliance and Quality Assurance

Lenix products are produced exclusively with materials that comply with EN standards and feature CE marking, ensuring they meet all relevant standards.



Galvanised Steel

Manufactured with DX51D+Z galvanised steel strips with zinc coating in accordance to EN 10346. Z275 Zinc coating of 275 g/m² on both sides. Meets EN 13658 parts 1&2 and EN 14353 applications. Z100 Zinc coating of 100 g/m² on both sides. Meets EN 14353 applications.

Application Areas:

- Suitable for interior applications.
- Not suitable for external applications unless secondary protection against corrosion is provided.
- Not permitted for areas exposed to high moisture and damp after application. (houses in wooded areas, wet rooms, swimming pools and domestic bathrooms etc.)

Compatibility:

- Suitable for lime, cement, lime-cement or gypsum based plaster applications.

Installation:

- Should be fixed with plaster or render dabs. Adhesive mortars with set accelerators containing chlorides are not suitable for fixing galvanised profiles.
- Not resistant to corrosion when using top coats of less than 3mm depth in exterior areas.
- Should not come into contact with aluminium or stainless steel profiles.
- Cut with hand plate shears across the wings and a fine toothed saw across bead noses.
- Should be fixed in accordance with embedding the bead's wings into the plaster.



Galvanised Steel with uPVC Nose

Manufactured with DX51D+Z galvanised steel strips with zinc coating of 275 g/m² on both sides in accordance to EN 10346 and protective uPVC nose. uPVC nose adds protection and a maintenance free finish.

Application Areas:

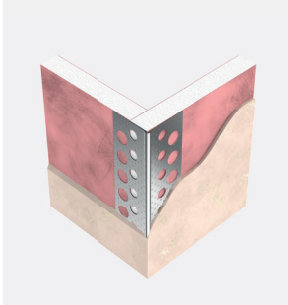
- Suitable for exterior applications and in conditions with high moisture and damp. (houses in wooded areas, bathrooms, etc.)
- Not suitable for exposed coastal locations or corrosive environments.

Compatibility:

- Suitable for lime or cement based renders, scratch renders, pasty finishing coats.

Installation:

- Should be mechanically fixed with stainless clout nails or with cement based mortar, no plaster.
- May not be plastered over. uPVC nose must be cleaned off immediately after plastering.
- Take off nails eventually used for fixing of the profiles before plastering.
- Cut with hand plate shears across the wings and a fine toothed saw across bead noses.



Aluminium Alloy

Manufactured with natural aluminium strips in accordance to EN 485 and EN 573.

Application Areas:

- Suitable for interior applications and thermal insulation systems.
- Not suitable for external applications unless made from white powder-coated aluminium which is suitable for use with mineral render systems and with epoxy, silicone or silicate render systems.

Compatibility:

- Suitable for gypsum and synthetic resin plaster applications.
- Not suitable for cement and lime-based plasters unless coated with base coating.

Installation:

- Should be fixed with plaster in the same quality as the base coat.
- Cut with hand plate shears across the wings and a fine toothed saw across bead noses.
- Never with a blade.



uPVC

Extruded with impact resistant, %0 recycled content and high quality rigid uPVC.

- Economical alternative to stainless steel for external applications.
- Superior corrosion resistance unlike galvanized beads.
- Unsharp edges prevent injuries.
- Convenient, easy to cut lengths on site.
- Light and easy to transport.
- Resistant to breakage.

Application Areas:

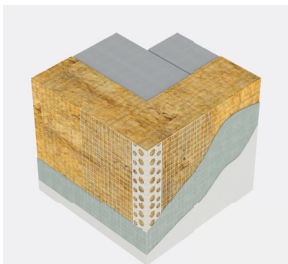
- Precise solution for interior areas exposed to high moisture and damp after application. (houses in wooded areas, wet rooms, swimming pools and domestic bathrooms etc.)
- Suitable for exposed coastal locations or corrosive environments.

Compatibility:

- Suitable for external applications with appropriate cement based renders.

Installation:

- Should be fixed with plaster in interior applications.
- Should be fixed with cement based adhesive mortar dabs in exterior applications.
- Cut using a fine-toothed hacksaw across bead noses.



uPVC with Glass Fibre Mesh

Extruded with impact resistant, %0 recycled content, high quality rigid uPVC and reinforcement alkali-resistant glass fibre mesh.

- ETAG 004 certified 145 g/m² reinforcement alkali-resistant E-glass fibre mesh.
- High quality 145, 110, 75 g/m² reinforcement alkali-resistant glass fibre mesh.
- Strong adhesion of bead and glass fibre mesh with transparent hot-melt glue.

Application Areas:

- Suitable for ETICS, EWI and EIFS applications.

Installation:

- Should be pushed into the first base coat layer.
- Cut using a fine-toothed hacksaw across bead noses.

Reliable Packaging and in-house Pallet Production

Lenix packaging are designed to protect and preserve the quality of our products during transport and storage.

Lenix pallets are made;

* We understand the importance of packaging in ensuring that our products reach our customers in perfect condition.

** Lenix packaging is a testament to our commitment to quality and attention to detail.

NO:1

**Wooden pallet
W:77cm H:81cm**

Pallet for Galvanised, Aluminium and uPVC Beads.
Orders should be placed as 3 pallets or multiples of 3.



NO:2

**Wooden pallet
W:77cm H:132cm**

Pallet for uPVC beads with mesh in cartons & steel cardboard boxes.
Orders should be placed as 3 pallets or multiples of 3.



NO:3

**Wooden pallet
W:115cm H:132cm**

Pallet for uPVC beads with mesh in cartons or foil bags
Orders should be placed as 2 pallets or multiples of 2.



Environmentally Friendly Packaging Materials



Bundle (bun)



Cardboard angleboard (cba)



Carton (ctn)



Carton hood (cbh)

Go Green!



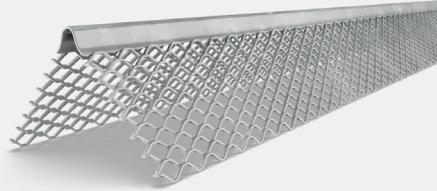
**DRY LINING
BEADS**

B30

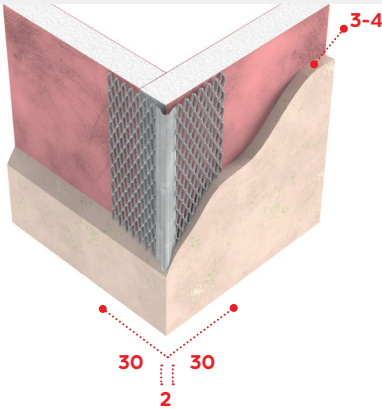
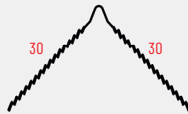
Mini Mesh Bead

30mm wing, 3-4mm plaster depth

CE
EN14353





- Aluzinc
- AZ150 g/m²
- 0.40mm
- EN 14353



- Metal corner bead designed to provide a straight and true reinforced corner for thin coat plaster and drywall applications.
- The fine mini-mesh wings allow for excellent bonding of thin coat plaster or drywall finishing compound to the substrate.
- Internal use only.

Lenix B30	
1084	3-4mm

Length -m-	
2.7	3.0

Product Code		
	Pcs / Bun	Pack / Pallet
1084	50	80



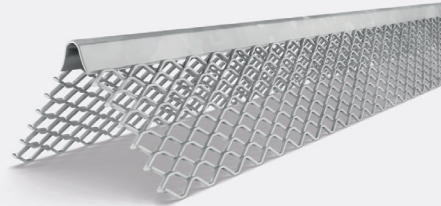
For Downloads

Other lengths between 2.0m and 3.0m available on request. ■

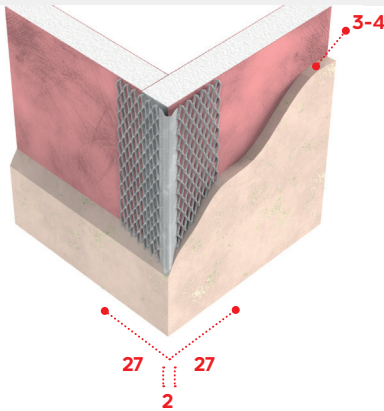
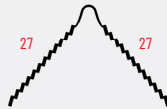
E27 Mini Mesh Bead

27mm wing, 3-4mm plaster depth

CE
EN14353



- Galvanised Steel
- 2275 g/m²
- 0.40mm
- EN 14353



- Metal corner bead designed to provide a straight and true reinforced corner for thin coat plaster and drywall applications.
- The fine mini-mesh wings allow for excellent bonding of thin coat plaster or drywall finishing compound to the substrate.
- Internal use only.

Lenix E27

1087 3-4mm

Length -m-

2.4 2.7 3.0

Product Code

1087



Pcs / Bun

50



Pack / Pallet

80

- Other lengths between 2.0m and 3.0m available on request.

E22

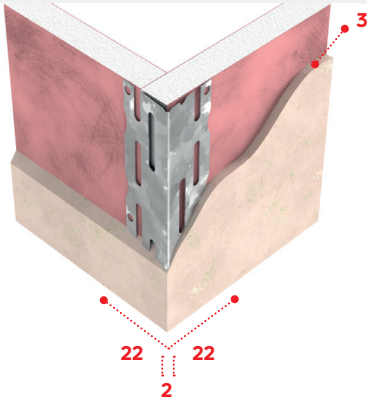
Thin Coat Bead

22mm wing, 3mm plaster depth

CE
EN14353



- Galvanised Steel
- Z275 g/m²
- 0.40mm
- EN 14353



- Metal corner bead designed to provide a straight and true reinforced corner for thin coat plaster and drywall applications.
- The perforated wings allow for superior plaster key.
- Use on plasterboard or aerated blocks.
- Internal use only.

Lenix E22		Length -m-			Product Code	 Pcs / Cba	 Pack / Pallet
1086	3mm	2.4	2.7	3.0	1086	50	80



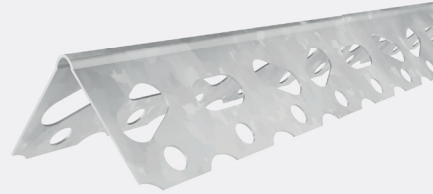
For Downloads

Other lengths between 2.0m and 3.0m available on request. ■

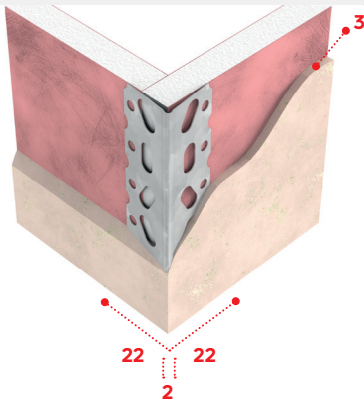
E18 Thin Coat Bead

22mm wing, 3mm plaster depth

CE
EN14353



- Galvanised Steel
- Z275 g/m²
- 0.40
- EN 14353



- Metal corner bead designed to provide a straight and true reinforced corner for thin coat plaster and drywall applications.
- The perforated wings allow for superior plaster key.
- Use on plasterboard or aerated blocks.
- Internal use only.

Lenix E18

2550 3mm

Length -m-

2.4 2.7 3.0

Product Code

2550



Pcs / Cba

50



Pack / Pallet

80

■ Other lengths between 2.0m and 3.0m available on request.

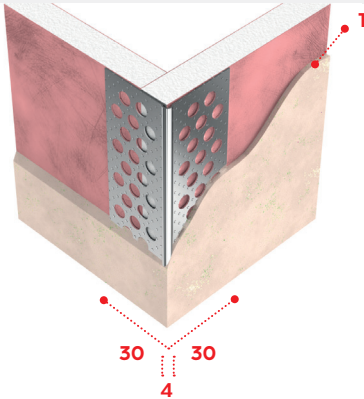
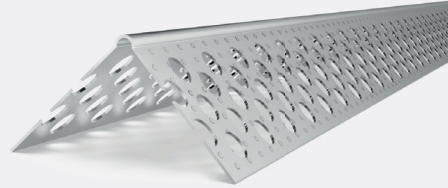
I30

Drywall Corner Bead

30mm knurled wing, 1mm plaster depth

CE
EN14353


- Galvanised Steel
- Z100 g/m²
- 0.40mm
- EN 14353



- Metal corner bead for drywall finishing.
- Provides a high-quality finish and protection at drywall corners.
- Knurled & perforated wings for superior joint compound adhesion.
- Internal use only.

Lenix I30	
1054	1mm

Length -m-	
2.8	3.0

Product Code		
	Pcs / Bun	Pack / Pallet
1054	25	90



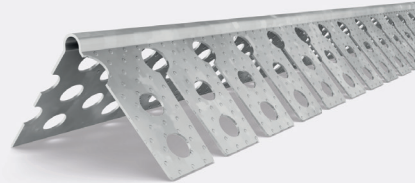
For Downloads

Other lengths between 2.0m and 3.0m available on request. ■

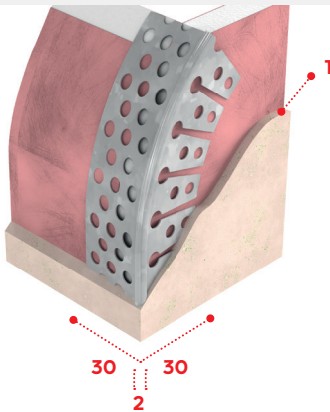
I30-A Drywall Arch Bead

30mm knurled wing, 1mm plaster depth

CE
EN14353



- Galvanised Steel
- Z100 g/m²
- 0.40mm
- EN 14353



- Metal arch corner bead for drywall finishing.
- Provides a high-quality finish and protection at drywall arches.
- Knurled & perforated wings for superior joint compound adhesion.
- Internal use only.

Lenix I30-A		Length -m-		Product Code	Pcs / Bun	Pack / Pallet
1056	1mm	2.8	3.0	1056	25	90

■ Other lengths between 2.0m and 3.0m available on request.

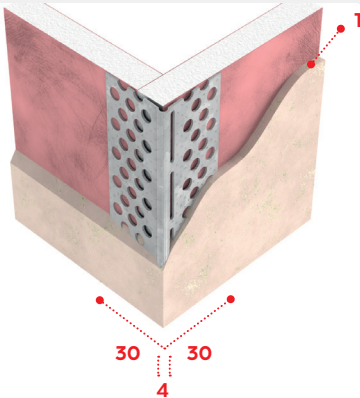
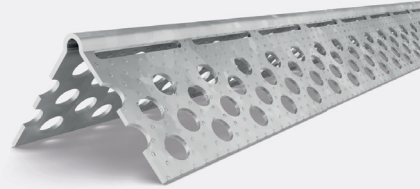
I30-VA

Drywall Corner Bead



Variable angle, 30mm wing, 1mm plaster depth

CE
EN14353

- Galvanised Steel
- Z100 g/m²
- 0.40mm
- EN 14353



- This metal corner bead is designed for finishing the outside corners of drywall with angles ranging from 40° to 135°.
- Provides a high-quality finish and protection at drywall corners.
- Knurled & perforated wings for superior joint compound adhesion.
- Internal use only.

Lenix I30-VA		Length -m-		Product Code	 Pcs / Bun	 Pack / Pallet
1057	1mm	2.8	3.0	1057	25	90



For Downloads

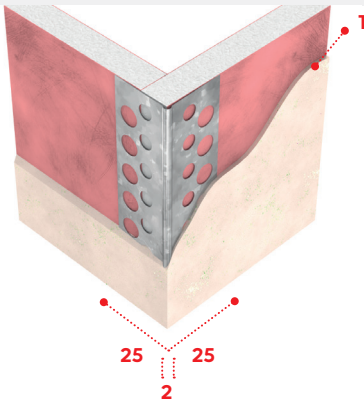
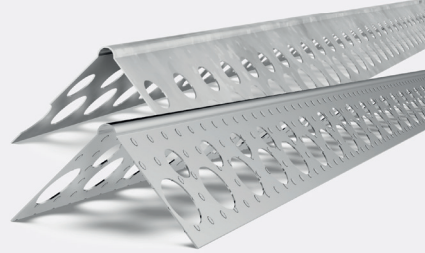
Other lengths between 2.0m and 3.0m available on request. ■

R25 & R25-S Drywall Corner Bead

25mm knurled or smooth wing, 1mm plaster depth

CE
EN14353

- Galvanised Steel
- Z100 g/m²
- 0.40mm
- EN 14353



- Metal corner bead for drywall finishing.
- Provides a high-quality finish and protection at drywall corners.
- Perforated wings for superior joint compound adhesion.
- Internal use only.

Lenix R25 Knurled surface

1063 1mm

Length -m-

2.5 3.0

Product Code

1063
2372



Pcs / Ctn

100
100



Pack / Pallet

40
40

Lenix R25-S Smooth surface

2372 1mm

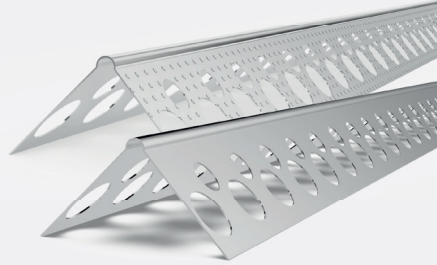
- Other lengths between 2.0m and 3.0m available on request.

R23 & R23-S

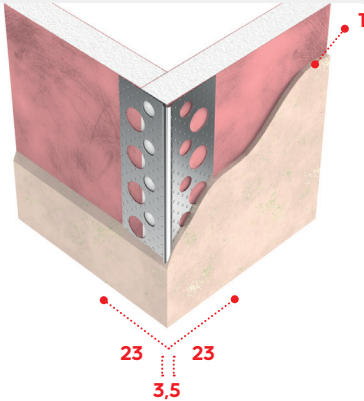
Drywall Corner Bead

23mm knurled or smooth wing, 1mm plaster depth

CE
EN14353



- Aluminium
- 0.40 mm
- EN 14353





- Metal corner bead for drywall finishing.
- Provides a high-quality finish and protection at drywall corners.
- Perforated wings for superior joint compound adhesion.
- Internal use only.

Lenix R23 Knurled surface	
2472	1mm

Lenix R23-S Smooth surface	
2302	1mm

Length -m-	
2.5	3.0

Product Code	 Pcs / Ctn	 Pack / Pallet
	2472	100
2302	100	80



For Downloads

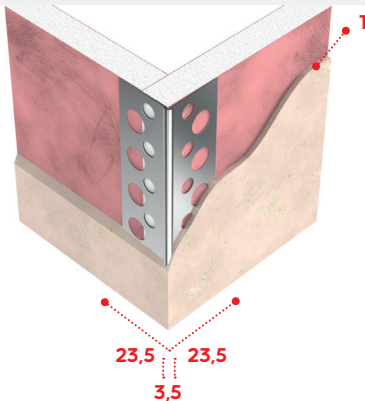
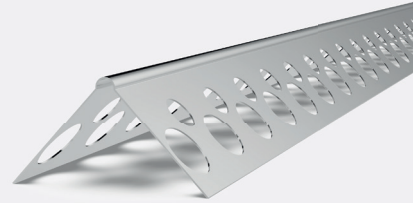
Other lengths between 2.0m and 3.0m available on request. ■

R235-S Drywall Corner Bead

23,5 mm smooth wing, 1mm plaster depth



- Aluminium
- 0.40 mm
- EN 14353



- Metal corner bead for drywall finishing.
- Provides a high-quality finish and protection at drywall corners.
- Perforated wings for superior joint compound adhesion.
- Internal use only.

Lenix R235-S

1066 1mm

Length -m-

2.0	2.5	2.6	2.7
2.75	2.8	3.0	

Product Code

1066



Pcs / Ctn

200



Pack / Pallet

60

■ Other lengths between 2.0m and 3.0m available on request.

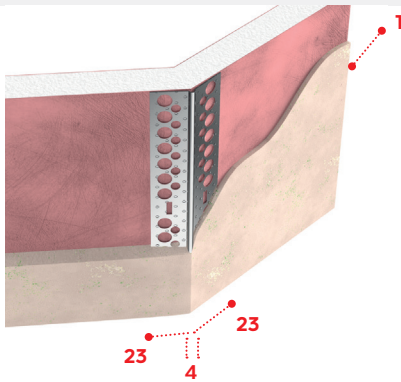
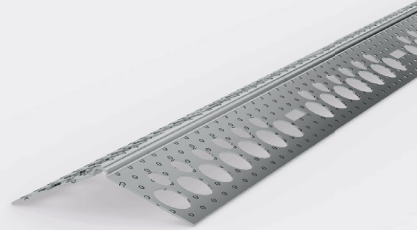
R23-135

Drywall Corner Bead

23mm knurled wings, 1mm plaster depth

CE
EN14353



- Aluminium
- 0.40 mm
- EN 14353



- Metal corner bead for drywall finishing.
- Provides a high-quality finish and protection at drywall corners.
- Perforated wings for superior joint compound adhesion.
- Internal use only.

Lenix R23-135	
1082	1mm

Length -m-	
2.5	3.0

Product Code	 Pcs / Ctn	 Pack / Pallet
	1082	150



For Downloads

Other lengths between 2.0m and 3.0m available on request. ■

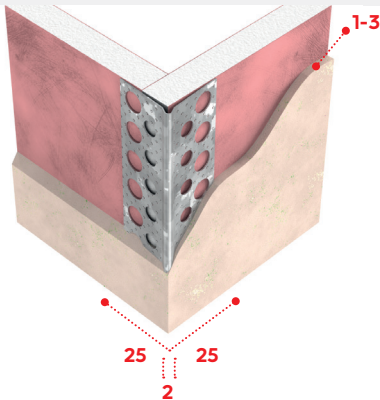
B7&B7-S Drywall Corner Bead

25mm wing, 1-3mm plaster depth,
knurled or smooth surface

CE
EN14353



- Galvanised Steel Z100 g/m² - 0.40mm
- Aluzinc AZ150 g/m² - 0.40mm
- EN 14353



- Metal corner bead for drywall finishing.
- Provides a high-quality finish and protection at drywall corners.
- Perforated wings for superior joint compound adhesion.
- Internal use only.

Lenix B7&B7-S Galvanised Steel

1077 1-3mm

Length -m-

2.0 2.6 2.7 2.8
3.0

Product Code

1077
2383

Pcs / Ctn

100
100

Pack / Pallet

25
25



Lenix B7&B7-S Aluzinc

2383 1-3mm

■ Other lengths between 2.0m and 3.0m available on request.

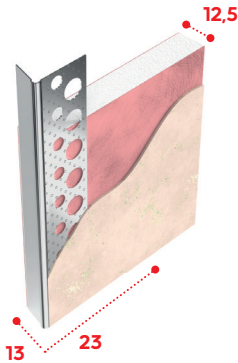
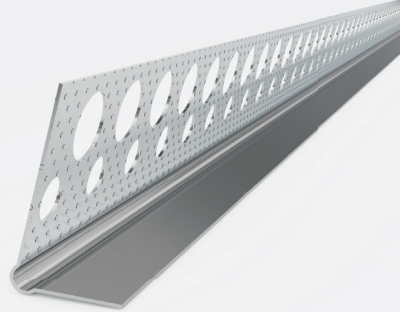
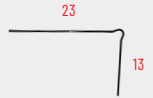
L23

Drywall Stop L Bead

23mm knurled wing, drywall finish, 12.5mm plasterboard

CE
EN14353



- Galvanised Steel Z100 g/m² - 0.40mm
- Aluminium 0.35mm
- EN 14353



- Metal stop L bead for a clean finished edge at window & door openings or when plasterboard abuts dissimilar surfaces such as suspended ceilings, plaster, masonry and concrete.
- Knurled & perforated wings for superior joint compound adhesion.
- Internal use only.

Lenix L23 - Aluminium	
1088	12.5mm

Length -m-	
2.7	3.0

Product Code	 Pcs / Ctn	 Pack / Pallet
	1088	200
2474	200	50

Lenix L23 - Galvanised Steel	
2474	12.5mm



For Downloads

Other lengths between 2.0m and 3.0m available on request. ■

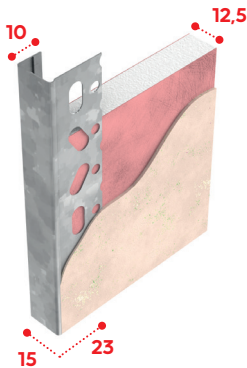
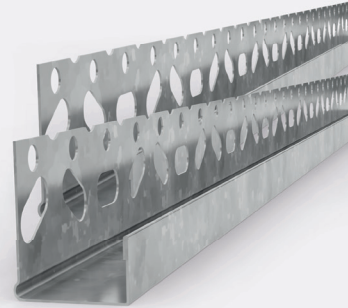
E23

Plasterboard Edge Bead

23mm smooth wing, 12.5mm or 15mm plasterboard





- Galvanised Steel
- Z100 g/m²
- 0.40mm
- EN 14353



- Provides solid protection and neat finished edges to plasterboards at window & door openings or when plasterboard meets dissimilar surfaces.
- Smooth & perforated wings for superior joint compound adhesion.
- Internal use only.
- Sizes available for 12.5mm or 15mm plasterboard.

Lenix E23	
1093	12.5mm
1094	15mm

Length -m-
3.0

Product Code	 Pcs / Ctn	 Pack / Pallet
	1093	50
1094	50	50

■ Other lengths between 2.0m and 3.0m available on request.

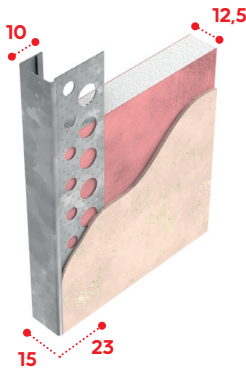
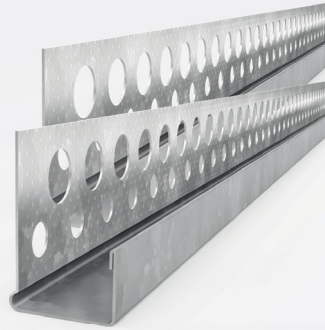
J23

Plasterboard Edge J Bead

23mm knurled wing, 12.5mm or 15mm plasterboard

EN14353



- Galvanised Steel
- Z100 g/m²
- 0.40mm
- EN 14353



- Provides solid protection and neat finished edges to plasterboards at window & door openings or when plasterboard meets dissimilar surfaces.
- Knurled & perforated wings for superior joint compound adhesion.
- Internal use only.
- Sizes available for 12.5mm or 15mm plasterboard.

Lenix J23	
1091	12.5mm
1092	15mm

Length -m-	
2.7	3.0

Product Code		
	Pcs / Ctn	Pack / Pallet
1091	50	50
1092	50	50



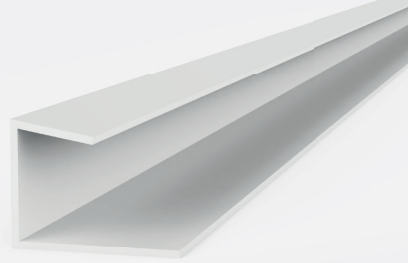
For Downloads

Other lengths between 2.0m and 3.0m available on request. ■

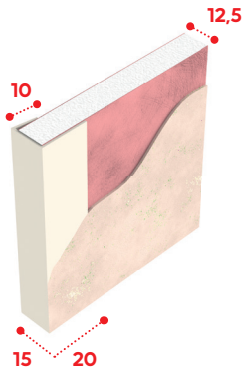
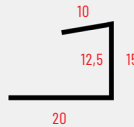
V1510 Plasterboard J Bead

20mm wing, 12.5mm plasterboard

CE
EN14353





- uPVC
- White
- EN 14353



- Caps unfinished drywall, providing durable protection against mechanical damage. It ensures clean, neat edges for plasterboards at window and door openings or where plasterboard meets dissimilar surfaces.
- Internal use only.
- Sizes available for 12.5mm plasterboard.

Lenix V1510	
2693	12.5mm

Length -m-	
2.5	3.0

Product Code	 Pcs / Ctn	 Pack / Pallet
	2693	50

■ Other lengths between 2.0m and 3.0m available on request.

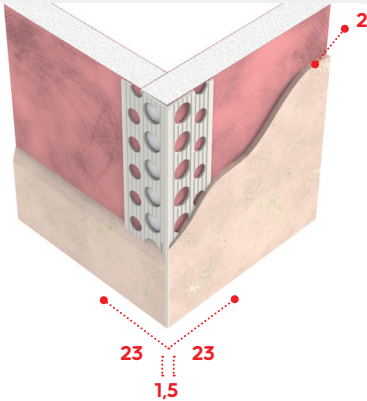
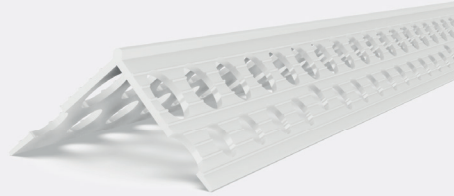
V230

Corner Bead

23mm wing, 2mm plaster depth, perfect-edge

CE
EN14353



- uPVC
- White
- EN 14353



- PVC corner bead for thin coat plaster & drywall applications providing a high-quality finish and protection at drywall corners.
- Sharp rigid nose provide pointier corners for a modern look.
- Textured & knurled wings for a good joint compound adhesion.
- Perforated wings allow for expansion & contraction from temperature changes.
- Durable, impact and corrosion resistant.

Lenix V230	
1067	2mm

Length -m-	
2.5	3.0

Product Code		
	Pcs / Ctn	Pack / Pallet
1067	100	40



For Downloads

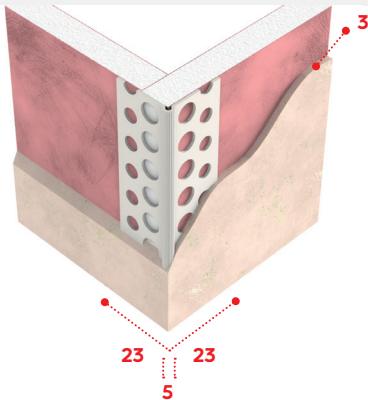
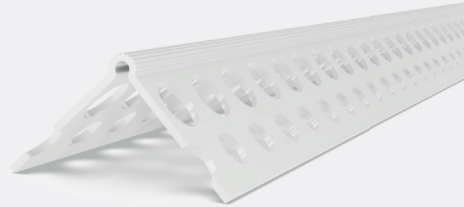
Other lengths between 2.0m and 3.0m available on request. ■

V23-U Corner Bead

23mm wing, 3mm plaster depth

CE
EN14353

- uPVC
- White
- EN 14353



- PVC corner bead for thin coat plaster & drywall applications providing a high-quality finish and protection at drywall corners.
- Textured & knurled wings for a good joint compound adhesion.
- Perforated wings allow for expansion & contraction from temperature changes.
- Durable, impact and corrosion resistant.

Lenix V23-U		Length -m-		Product Code	Pcs / Ctn	Pack / Pallet
1052	3mm	2.5	3.0	1052	100	51

■ Other lengths between 2.0m and 3.0m available on request.

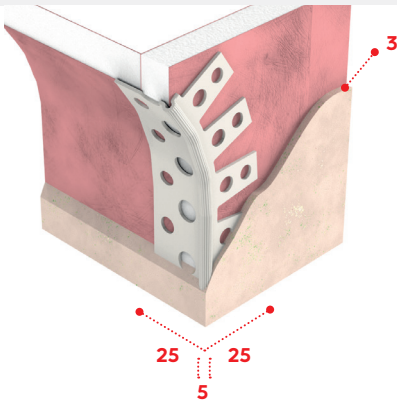
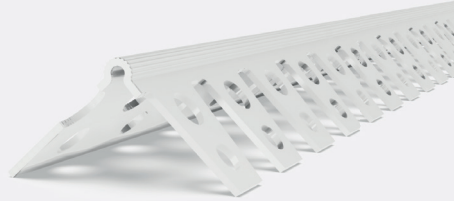
V23-A

Arch Bead



25mm wing, 3mm plaster depth

CE
EN14353

- uPVC
- White
- EN 14353



- A flexible PVC arch corner bead for thin coat plaster & drywall applications providing a high-quality finish and protection at drywall curves & arches.
- Textured & knurled wings for a good joint compound adhesion.
- Perforated wings allow for expansion & contraction from temperature changes.
- Durable, impact and corrosion resistant.

Lenix V23-A		Length -m-		Product Code	 Pcs / Ctn	 Pack / Pallet
1058	3mm	2.5	3.0	1058	100	50



For Downloads

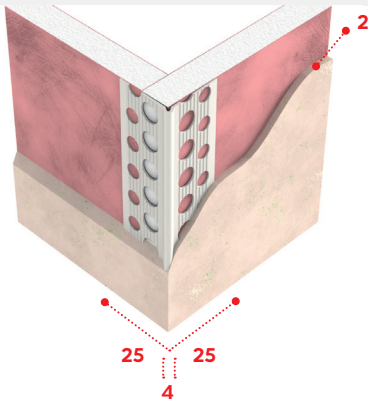
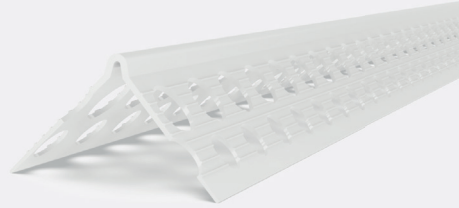
Other lengths between 2.0m and 3.0m available on request. ■

V25 Corner Bead

25mm wing, 2mm plaster depth

CE
EN14353

- uPVC
- White
- EN 14353



- PVC corner bead for thin coat plaster & drywall applications providing a high-quality finish and protection at drywall corners.
- Textured & knurled wings for a good joint compound adhesion.
- Perforated wings allow for expansion & contraction from temperature changes.
- Durable, impact and corrosion resistant.

Lenix V25		Length -m-		Product Code	Pcs / Ctn	Pack / Pallet
1060	2mm	2.5	3.0	1060	100	55

■ Other lengths between 2.0m and 3.0m available on request.

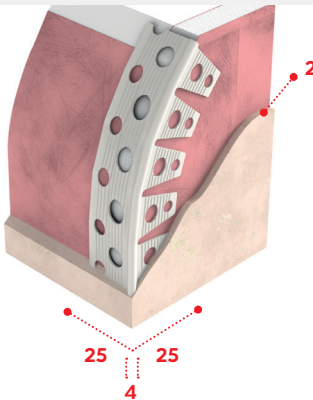
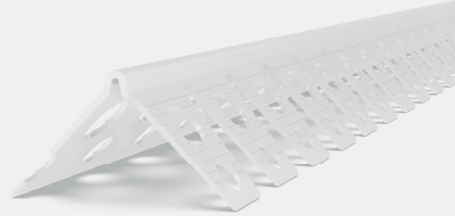
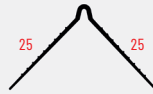
V25-A

Arch Bead


25mm wing, 2mm plaster depth

CE
EN14353

- uPVC
- White
- EN 14353



- A flexible PVC arch corner bead for thin coat plaster & drywall applications providing a high-quality finish and protection at drywall curves & arches.
- Textured & knurled wings for a good joint compound adhesion.
- Perforated wings allow for expansion & contraction from temperature changes.
- Durable, impact and corrosion resistant.

Lenix V25-A		Length -m-		Product Code	 Pcs / Ctn	 Pack / Pallet
1065	2mm	2.5	3.0	1065	100	50



For Downloads

Other lengths between 2.0m and 3.0m available on request. ■

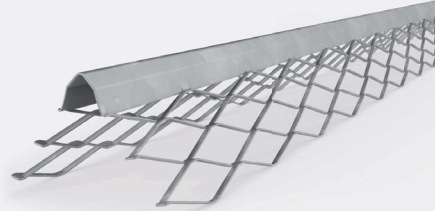


**INTERNAL PLASTER
BEADS**

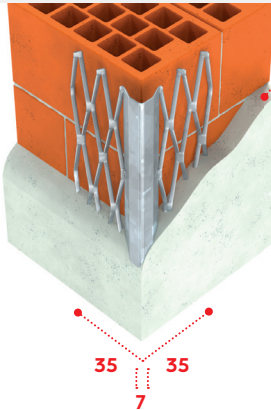
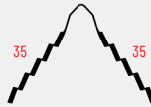
X1 Plaster Corner Bead

35mm wing, 10-12mm plaster depth

CE
EN13658-1





- Galvanised Steel
- 2275 g/m²
- 0.60 - 0.50mm
- EN 13658-1



- 10-12 Metal corner bead designed to provide a straight and true reinforced outside corner for internal 2-coat plaster applications.
- Expanded mesh wings form a strong bond to the substrate and allow for complete embedment of the entire bead, especially near the nose where strength is needed.
- Internal use only.

Lenix X1	
1002	0.60mm
1001	0.50mm

Length -m-				
1.4	1.5	1.6	1.8	
2.0	2.2	2.25	2.5	
2.6	2.7	2.75	2.8	
3.0				

Product Code	 Pcs / Bun	 Pack / Pallet
	1002	25
1001	25	100



For
Downloads

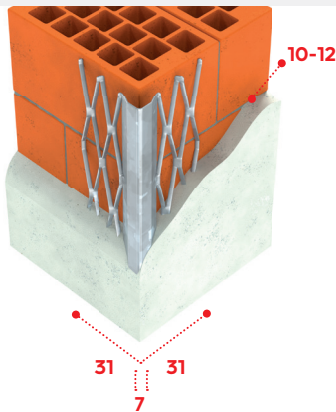
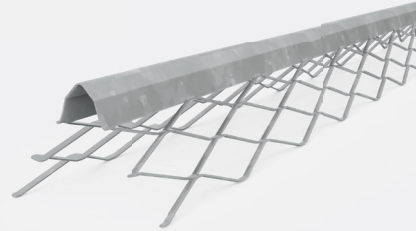
Other lengths between 2.0m and 3.0m available on request. ■

X4 Plaster Corner Bead

31mm wing, 10-12mm plaster depth

CE
EN13658-1

- Galvanised Steel
- 2275 g/m²
- 0.50mm
- EN 13658-1



- Metal corner bead designed to provide a straight and true reinforced outside corner for internal 2-coat plaster applications.
- The expanded mesh wings form a strong bond to the substrate and allow for complete embedment of the entire bead, especially near the nose where strength is needed.
- Internal use only.

Lenix X4	
2458	10-12mm

Length -m-			
1.4	1.5	1.6	1.8
2.0	2.2	2.25	2.5
2.6	2.7	2.75	2.8
3.0			

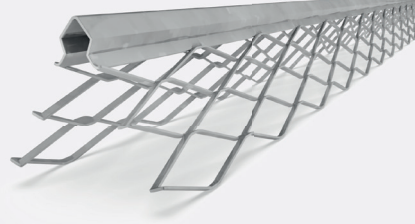
Product Code	Pcs / Bun	Pack / Pallet
2458	25	100

■ Other lengths between 2.0m and 3.0m available on request.

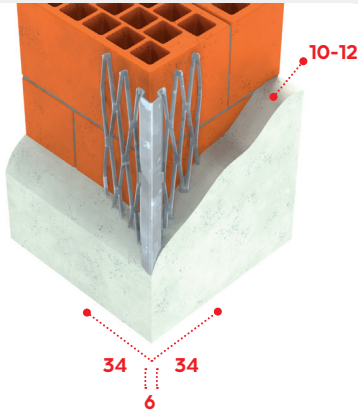
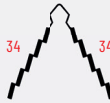
S5 Plaster Corner Bead

34mm wing, 10-12mm plaster depth

CE
EN13658-1





- Galvanised Steel
- 2275 g/m²
- 0.50mm
- EN 13658-1





- Metal corner bead designed to provide a straight and true reinforced outside corner for internal 2-coat plaster applications.
- Expanded mesh wings form a strong bond to the substrate and allow for complete embedment of the entire bead, especially near the nose where strength is needed.
- Internal use only.

Lenix S5	
1003	10-12mm

Length -m-		
2.5	2.8	3.0

Product Code	 Pcs / Ctn	 Pack / Pallet
	1003	100

Product Code	 Pcs / Bun	 Pack / Pallet
	1003	25



For
Downloads

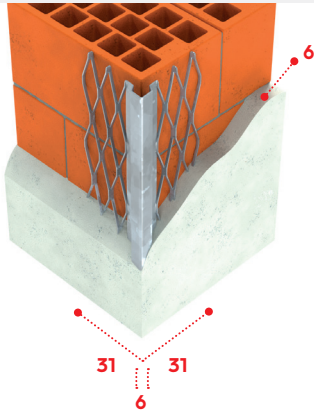
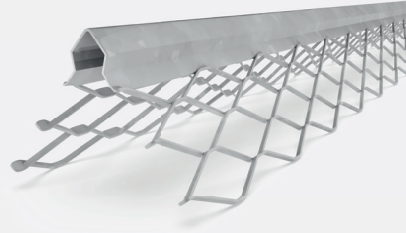
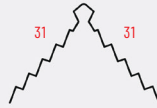
Other lengths between 2.0m and 3.0m available on request. ■

S3 Plaster Corner Bead

31mm wing, 6mm plaster depth

CE
EN13658-1

- Galvanised Steel
- 2275 g/m²
- 0.40mm - 0.50mm
- EN 13658-1



- Metal corner bead designed to provide a straight and true reinforced outside corner for internal 2-coat plaster applications.
- Expanded mesh wings form a strong bond to the substrate and allow for complete embedment of the entire bead, especially near the nose where strength is needed.
- Internal use only.

Lenix S3	
2306	0.40mm
1004	0.50mm

Length -m-			
1.5	1.6	1.8	2.0
2.2	2.25	2.4	2.5
2.6	2.7	2.75	2.8
3.0			

Product Code	Pcs / Ctn	Pack / Pallet
2306	100	40

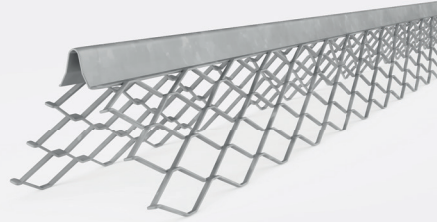
Product Code	Pcs / Bun	Pack / Pallet
1004	25	100

■ Other lengths between 2.0m and 3.0m available on request.

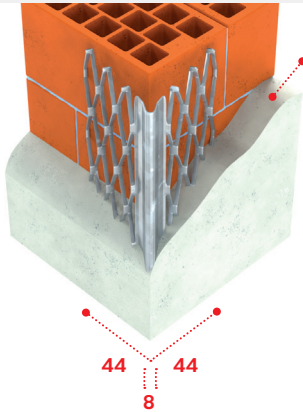
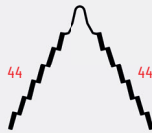
E44 Angle Bead

44mm wing, 10-13mm plaster depth

CE
EN13658-1



- Galvanised Steel
- 2275 g/m²
- 0.40mm
- EN 13658-1





10-13

- Metal corner bead designed to provide a straight and true reinforced outside corner for internal 2-coat plaster applications.
- Expanded mesh wings form a strong bond to the substrate and allow for complete embedment of the entire bead, especially near the nose where strength is needed.
- Internal use only.

Lenix E44	
2381	10-13mm

Length -m-		
2.4	2.7	3.0

Product Code		
	Pcs / Ctn	Pack / Pallet
2381	50	100



For
Downloads

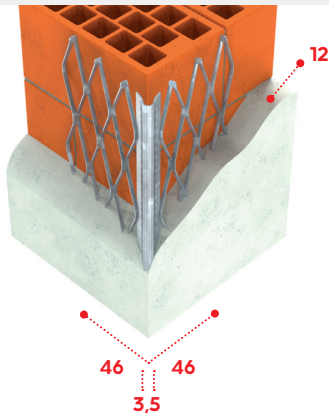
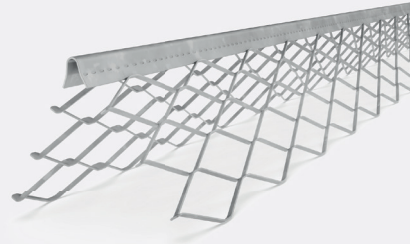
Other lengths between 2.0m and 3.0m available on request. ■

Q46 Angle Bead

46mm wing, 12mm plaster depth

CE
EN13658-1



- Galvanised Steel
- 2275 g/m²
- 0.50mm
- EN 13658-1



- Metal corner bead designed to provide a straight and true reinforced outside corner for internal 2-coat plaster applications.
- Expanded mesh wings form a strong bond to the substrate and allow for complete embedment of the entire bead, especially near the nose where strength is needed.
- Internal use only.

Lenix Q46 - Galvanized	
1012	12mm

Length -m-			
2.5	2.6	2.7	2.8
3.0			

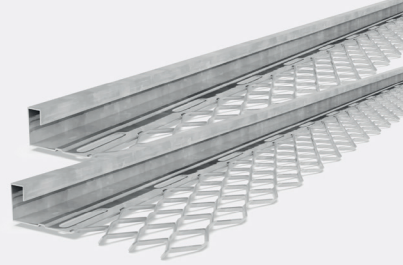
Product Code	 Pcs / Bun	 Pack / Pallet
	1012	25

Other lengths between 2.0m and 3.0m available on request.

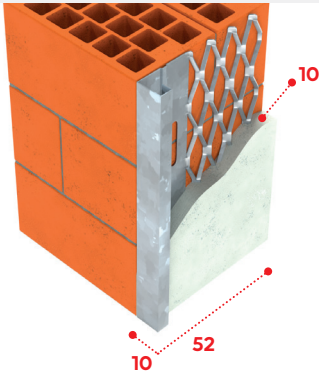
E52 Plaster Stop Bead

52mm wing, 10mm or 14mm plaster depth

CE
EN13658-1





- Galvanised Steel
- 2275 g/m²
- 0.50mm
- EN 13658-1



- Metal stop bead for 2-coat plaster applications.
- Designed to effectively terminate plaster edge and/or to separate plaster from all other materials at doors, windows and other openings; also when plaster meets dissimilar material
- Expanded mesh wing provides excellent plaster embedment at the junctions of the bead and metal lath.
- Internal use only.

Lenix E52	
1020	10mm
2434	14mm

Length -m-		
2.5	2.6	3.0

Product Code	 Pcs / Bun	 Pack / Pallet
	1020	25
2434	25	70



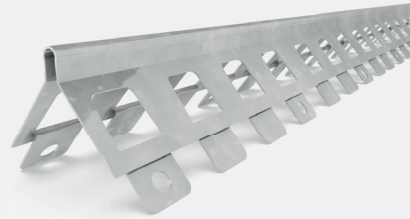
For
Downloads

Other lengths between 2.0m and 3.0m available on request. ■

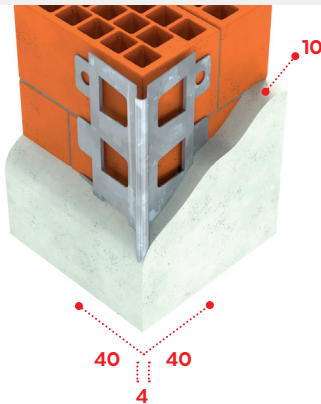
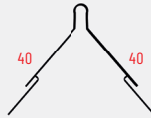
F40 Plaster Corner Bead

40mm wing, 10mm plaster depth

CE
EN13658-1



- Galvanised Steel
- 2275 g/m²
- 0.50mm
- EN 13658-1



- Metal corner bead designed to provide a straight and true reinforced outside corner for internal 2-coat plaster applications.
- Large-perforated wing allows edge protection for mechanically stressed areas such as wall edges and window soffits.
- Internal use only.

Lenix F40		Length -m-			Product Code	Pcs / Shf	Pack / Pallet
2311	10mm	2.25	2.5	3.0	2311	15	80

■ Other lengths between 2.0m and 3.0m available on request.

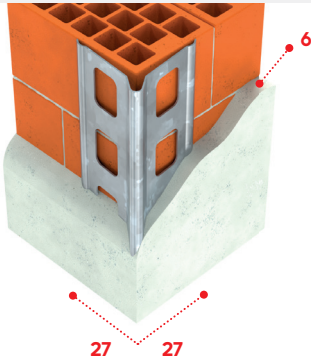
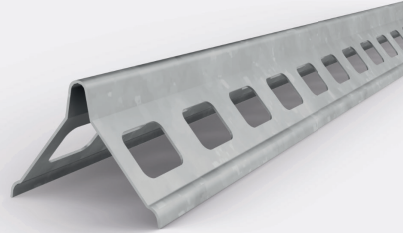
B1

Corner Bead

27mm wing, 6mm plaster depth

CE
EN13658-1


- Aluzinc
- AZ150 g/m²
- 0.40mm
- EN 13658-1



- Metal corner bead designed to provide a straight and true reinforced corner for internal plaster applications.
- The large-perforated wings allow for edge protection for mechanically stressed areas such as wall edges and window soffits.
- Internal use only.

Lenix B1	
1015	6mm

Length -m-	
2.6	3.0

Product Code		
	Pcs / Bun	Pack / Pallet
1015	25	80



For
Downloads

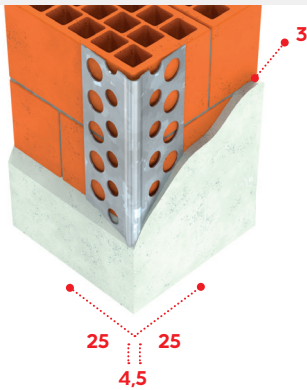
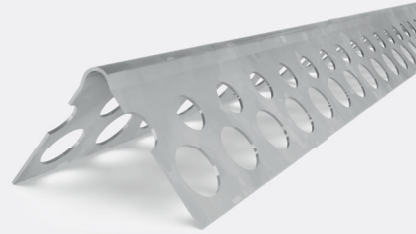
Other lengths between 2.0m and 3.0m available on request. ■

B9-S Thin Coat Bead

25mm wing, 3mm plaster depth, smooth-surface

CE
EN13658-1

- Aluzinc
- AZ150 g/m²
- 0.40mm
- EN 13658-1



- Metal corner bead designed to provide a straight and true reinforced corner for thin coat plaster and drywall applications.
- The perforated wings allow for superior plaster key.
- Use on plasterboard or aerated blocks.
- Internal use only.

Lenix B9-S

2691 3mm

Length -m-

2.7 2.8 3.0

Product Code

2691



Pcs / Bun

25



Pack / Pallet

100

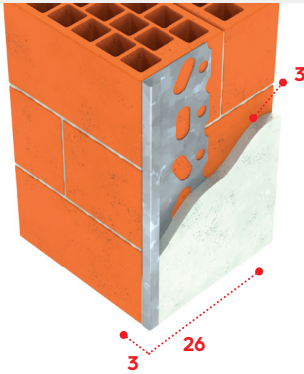
■ Other lengths between 2.0m and 3.0m available on request.

E3 Thin Coat Stop Bead

26mm wing, 3mm plaster depth

CE
EN13658-1

- Galvanised Steel
- 2275 g/m²
- 0.50mm
- EN 14353



- Metal stop bead designed to provide a straight neat finish and also reinforce thin-coat plaster on its edge.
- Terminates thin-coat plaster at openings, abutment of walls and for ceiling finishes.
- Internal use only.

Lenix E3		Length -m-			Product Code	Pcs / Bun	Pack / Pallet
2549	3mm	2.4	2.7	3.0	2549	25	80



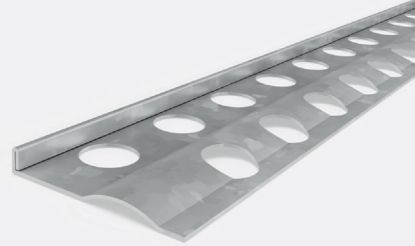
For
Downloads

Other lengths between 2.0m and 3.0m available on request. ■

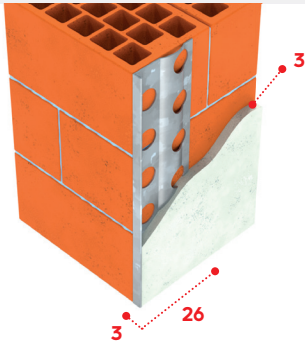
B50 Thin Coat Stop Bead

26mm wing, 3mm or 6mm plaster depth

CE
EN13658-1





- Aluzinc
- AZ150 g/m²
- 0.40mm
- EN 13658-1



- Metal stop bead designed to provide a straight neat finish and also reinforce thin-coat plaster on its edge.
- Terminates thin-coat plaster at openings, abutment of walls and for ceiling finishes.
- Internal use only.

Lenix B50	
2532	3mm
2536	6mm

Length -m-	
2.7	3.0

Product Code	 Pcs / Bun	 Pack / Pallet
	2532	25
2536	25	100

■ Other lengths between 2.0m and 3.0m available on request.

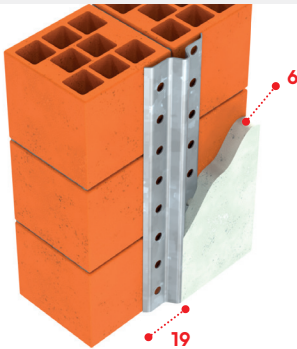
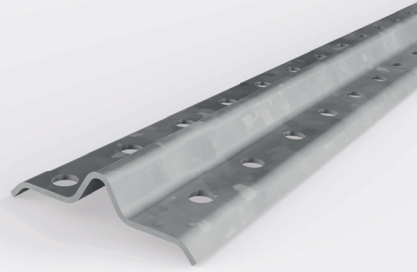
D3

Depth Gauge Bead

19mm wing, 6mm plaster depth

CE
EN13658-1



- Galvanised Steel
- 2275 g/m²
- 0.50 mm
- EN 13658-1



- Plaster depth gauge bead for internal plastering.
- Designed to control and maintain the thickness of plaster during application, ensuring a consistent and professional finish.
- Acts as a guide to ensure that the material is spread to the desired thickness.

Lenix D3	
2255	6mm

Length -m-			
2.5	2.6	2.75	2.8
3.0			

Product Code		
	Pcs / Bun	Pack / Pallet
2255	50	100



For
Downloads

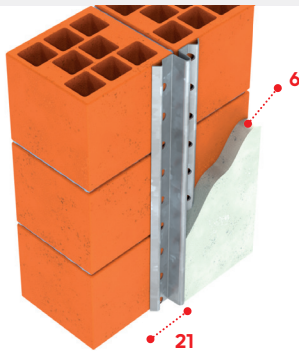
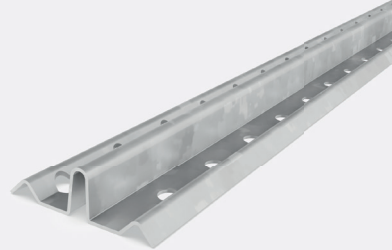
Other lengths between 2.0m and 3.0m available on request. ■

D6 Depth Gauge Bead

21mm wing, 6mm plaster depth



- Galvanised Steel Z275 g/m² - 0.50mm
- Aluzinc AZ150 g/m² - 0.40mm
- EN 13658-1



- Plaster depth gauge bead for internal plastering.
- Designed to control and maintain the thickness of plaster during application, ensuring a consistent and professional finish.
- Acts as a guide to ensure that the material is spread to the desired thickness.

Lenix D6 - Galvanised Steel

1026 6mm

Length -m-

2.5 2.6 2.75 2.80
3.0



Product Code

Pcs / Bun

Pack / Pallet

1026

50

100

Lenix D6 - Aluzinc

1023 6mm



Product Code

Pcs / Bun

Pack / Pallet

1023

50

80

- Other lengths between 2.0m and 3.0m available on request.

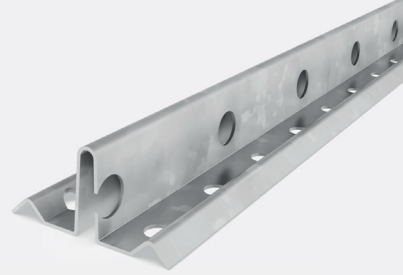


D10

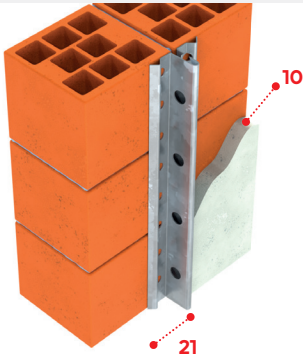
Depth Gauge Bead

21mm wing, 10mm plaster depth

CE
EN13658-1





- Galvanised Steel
- 2275 g/m²
- 0.50mm
- EN 13658-1



- Plaster depth gauge bead for internal plastering.
- Designed to control and maintain the thickness of plaster during application, ensuring a consistent and professional finish.
- Acts as a guide to ensure that the material is spread to the desired thickness.

Lenix D10	
1032	10mm

Length -m-			
2.5	2.6	2.75	2.8
3.0			

Product Code		
	Pcs / Bun	Pack / Pallet
1032	50	80



For
Downloads

Other lengths between 2.0m and 3.0m available on request. ■



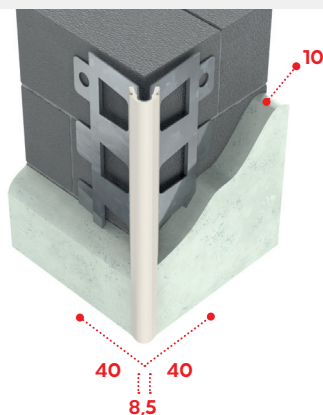
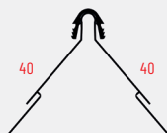
**EXTERNAL RENDER
BEADS**

F4 Corner Bead

40mm wing, 10mm or 14mm render depth

CE
EN 13658-2



- Galvanised Steel with uPVC-nose
- 2275 g/m²
- 0.50mm
- EN 13658-2



- Metal corner bead with uPVC nose for external render applications.
- Provides neat, straight and strong external render corners.
- Perforated wings for superior render adhesion and crack prevention.
- uPVC nose for wear & corrosion-resistance and edge-protection also.

Lenix F4		
1047	White	10mm
1047	Beige	10mm
2308	White	14mm
2308	Beige	14mm

Length -m-		
2.25	2.5	3.0

Product Code	 Pcs / Shf	 Pack / Pallet
	1047	15
2308	15	80



For Downloads

Other lengths between 2.0m and 3.0m available on request. ■

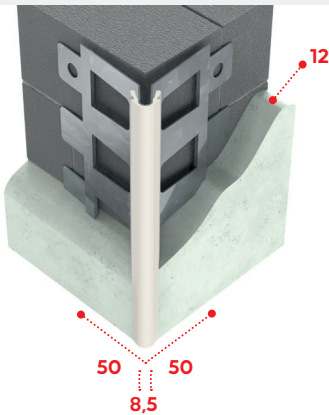
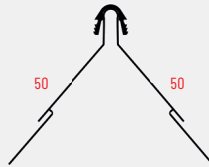
F5

Corner Bead

50mm wing, 12mm render depth

CE
EN13658-2

- Galvanised Steel with uPVC-nose
- White
- 2275 g/m²
- 0.50mm
- EN 13658-2



- Metal corner bead with uPVC nose for external render applications.
- Provides neat, straight and strong external render corners.
- Perforated wings for superior render adhesion and crack prevention.
- uPVC nose for wear & corrosion-resistance and edge-protection also.

Lenix F5			Length -m-		Product Code	Pcs / Shf	Pack / Pallet
1045	White	12mm	2.75	3.0	1045	15	70

■ Other lengths between 2.0m and 3.0m available on request.

F7

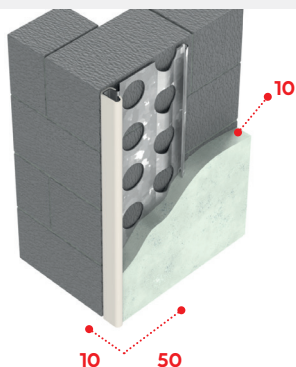
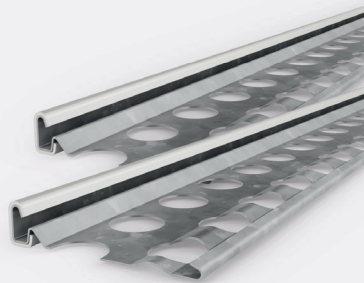
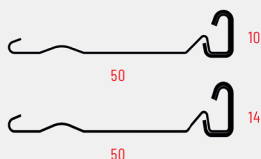
Stop Profile

50mm wing, 10mm or 14mm render depth

CE

EN13658-2

- Galvanised Steel with uPVC-nose
- 2275 g/m²
- 0.50mm
- EN 13658-2



- Metal stop profile with uPVC nose for neat, straight and strong external render edges.
- Perforated wings for superior render adhesion and crack prevention.
- uPVC nose for wear & corrosion-resistance and edge-protection also.
- Neatly terminates render against window & door frames and other dissimilar materials.

Lenix F7

1048	White	10mm
1048	Beige	10mm
1049	White	14mm
1049	Beige	14mm

Length -m-

2.25 2.5 3.0

Product Code

1048

1049



Pcs / Bun

15

15



Pack / Pallet

80

80

Other lengths between 2.0m and 3.0m available on request. ■



For Downloads

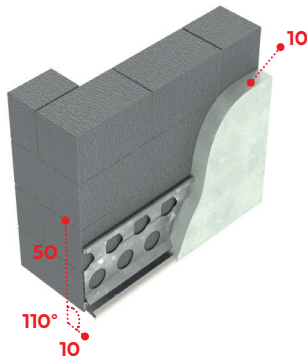
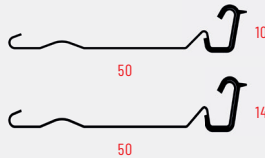
F9 Base Profile

50mm wing, 10mm or 14mm render depth

CE
EN13658-2



- Galvanised Steel with uPVC-nose
- 2275 g/m²
- 0.50mm
- EN 13658-2



- Metal base profile with uPVC nose for forming drip edges and perimeter base support for external render applications.
- Forms and protects the lower edge of the render.
- Drip leg with an angle of 110 to direct moisture away from openings and foundation walls. Designed to be used above window & door openings or along the DPC level to assist with moving moisture/ rainwater away from the wall.
- Perforated wings for superior render adhesion and crack prevention.
- uPVC nose for wear & corrosion-resistance and edge-protection also.

Lenix F9

1050	White	10mm
1050	Beige	10mm
1051	White	14mm
1051	Beige	14mm

Length -m-

2.25 2.5 3.0

Product Code

1050

1051



Pcs / Bun

15

15



Pack / Pallet

80

80

- Other lengths between 2.0m and 3.0m available on request.





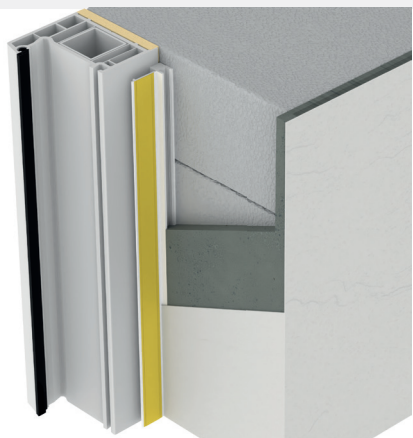
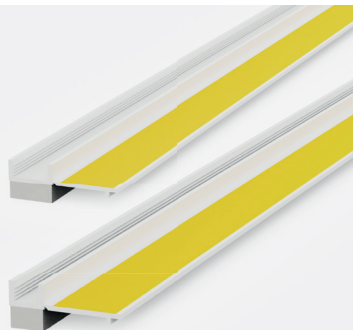
**uPVC BEADS FOR
EXTERNAL & INTERNAL USE**

WR1 Window Reveal Bead

6 or 9mm plaster/render depth


EN13658-2

- uPVC ■ EN13658-2
- 3mm UV-acrylate adhesive PE foam tape
- Tear-off flap with a self-adhesive transfer foil tape



- Lenix WR1 Window Reveal Bead ensures an elastic, driving rain-proof connection between plaster/render and window/door frames in external rendering and internal plastering applications, eliminating the need of sealants. 6mm and 9mm render depth of bead options available.
- The UV-acrylate based adhesive PE foam tape offers superior driving rain resistance, high adhesive strength and optimal aging resistance, while also allowing a high level of motion absorption. It is available in 3x5.5mm for 6mm render depth and 3x8mm for 9mm render depth.
- The tear-off flap with a self-adhesive transfer foil tape ensures secure attachment of the protective cover film, protecting windows/doors during plastering/rendering work. The protective flap is removed once the work is complete, leaving a clean plaster edge.

Lenix WR1

Product Code	Plaster/Render Depth	Color
1241	6mm	White
1243	9mm	White

Length -m-

2.4 2.5 2.6

Product Code

1241

1243



Pcs / Ctn

30

30



Pack / Pallet

50

50

■ Other lengths between 2.0m and 3.0m available on request.

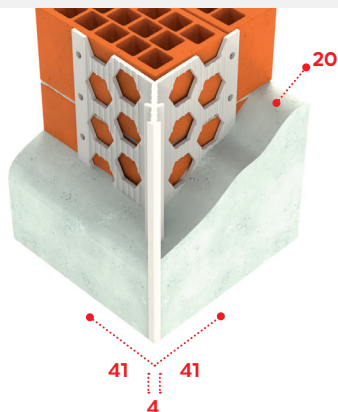
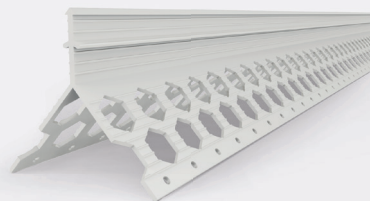
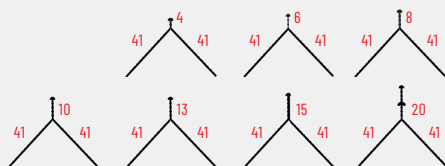
E41

Angle Bead

41mm wing, 4-6-8-10-13-15-20mm render/plaster depth

CE
EN13658-2



- uPVC
- White
- EN 13658-2



- Exterior grade uPVC corner bead for external render and also internal plaster applications.
- Provides rust-proof, high-impact-resistant and straight corners.
- Large perforations allow material to easily flow through and bond to the substrate for a more durable corner.

Lenix E41		
1041	White	20mm
1042	White	15mm
2692	White	13mm
2394	White	10mm
1043	White	8mm
2341	White	6mm
2402	White	4mm

Length -m-	
2,5	3,0

Product Code		
	Pcs / Ctn	Pack / Pallet
1041	34	24
1042	34	36
2692	34	40
2394	34	40
1043	34	40
2341	50	40
2402	50	40



For
Downloads

Other lengths between 2.0m and 3.0m available on request. ■

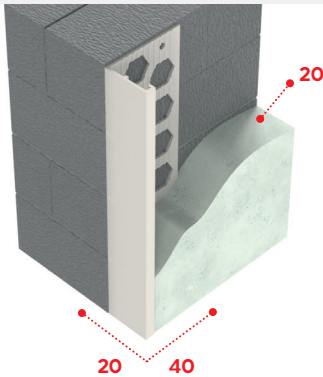
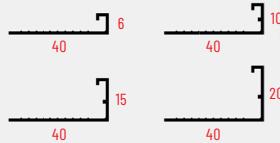
E40

Plaster Stop Bead

40mm wing, 6-10-15-20mm render/plaster depth


EN13658-2



- uPVC
- White
- EN 13658-2



- Exterior grade uPVC stop bead for external render and also internal plaster applications.
- Neatly terminates render and plaster against window & door frames and other dissimilar materials.

Lenix E40		
2453	White	20mm
2452	White	15mm
2451	White	10mm
2450	White	6mm

Length -m-	
2.5	3.0

Product Code		
	Pcs / Ctn	Pack / Pallet
2453	34	60
2452	34	66
2451	34	80
2450	50	88

■ Other lengths between 2.0m and 3.0m available on request.

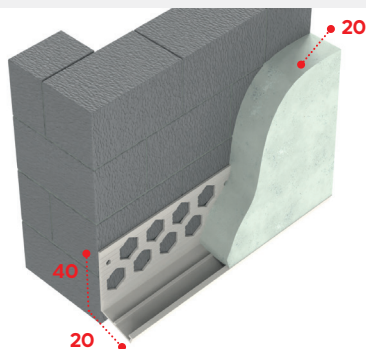
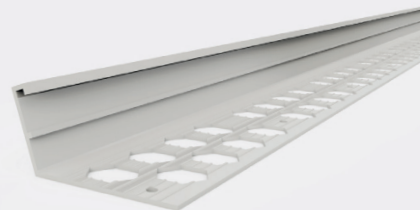
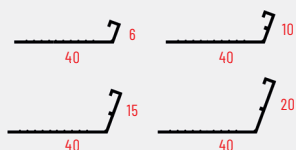
E45

Bellcast/Drip Bead

40mm wing, 6-10-15-20mm render depth

CE
EN 13658-2



- uPVC
- White
- EN 13658-2



- Exterior grade uPVC drip bead for forming drip edges and perimeter base support for external render applications.
- Forms and protects the lower edge of the render.
- Drip leg to direct moisture away from openings and foundation walls. Designed to be used above window & door openings or along the DPC level to assist with moving moisture/rainwater away from the wall.

Lenix E45		
2457	White	20mm
2456	White	15mm
2455	White	10mm
2454	White	6mm

Length -m-	
2.5	3.0

Product Code	 Pcs / Ctn	 Pack / Pallet
	2457	34
2456	34	66
2455	34	80
2454	50	66

Other lengths between 2.0m and 3.0m available on request. ■



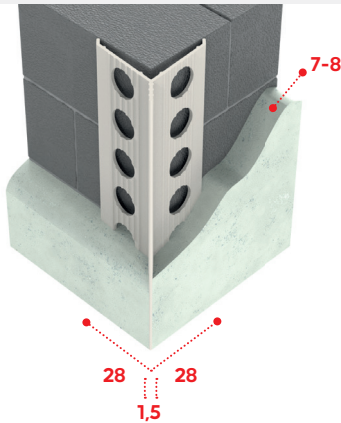
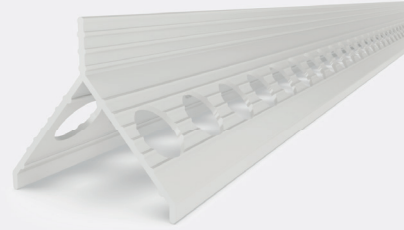
For
Downloads

S15 Corner Bead

28mm wing, 7-8mm render/plaster depth


EN 13658-2

- uPVC
- White
- EN 13658-2



- Exterior grade uPVC corner bead for external render and also internal plaster applications.
- Provides rust-proof, high-impact-resistant and straight corners.
- Perforations allow material to easily flow through and bond to the substrate for a more durable corner.

Lenix S15		Length -m-			Product Code	 Pcs / Ctn	 Pack / Pallet
1038	7-8mm	2.5	2.6	3.0	1038	50	51

■ Other lengths between 2.0m and 3.0m available on request.

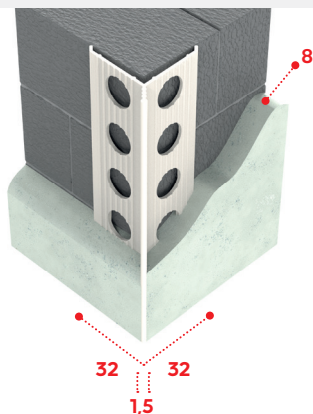
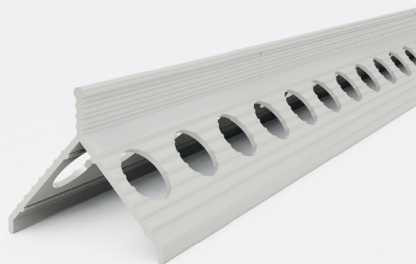
S15-XL

Corner Bead

32mm wing 8 mm render/plaster depth

CE
EN 13658-2

- uPVC
- White
- EN 13658-2



- Exterior grade uPVC corner bead for external render and also internal plaster applications.
- Provides rust-proof, high-impact-resistant and straight corners.
- Large perforations allow material to easily flow through and bond to the substrate for a more durable corner.

Lenix S15-XL

2654

8mm

Length -m-

2.5

Product Code

2654



Pcs / Cts

50



Pack / Pallet

40

Other lengths between 2.0m and 3.0m available on request. ■



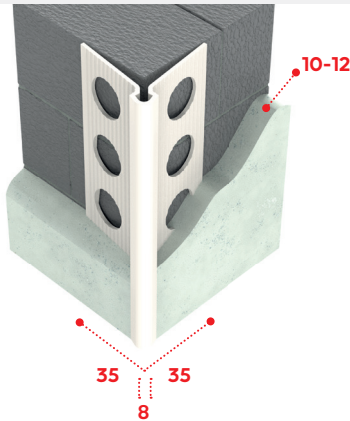
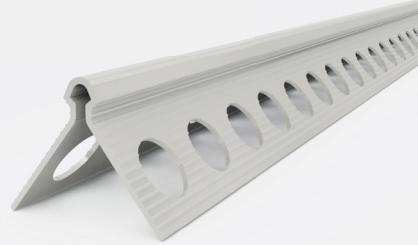
For
Downloads

S35 Corner Bead

35mm wing, 10-12mm render/plaster depth

CE
EN13658-2

- uPVC
- White
- EN 13658-2



- Exterior grade uPVC corner bead for external render and also internal plaster applications.
- Provides rust-proof, high-impact-resistant and straight corners.
- Perforations allow material to easily flow through and bond to the substrate for a more durable corner.

Lenix S35

2425

10-12mm

Length -m-

2.5

Product Code

2425



Pcs / Ctn

50



Pack / Pallet

36

■ Other lengths between 2.0m and 3.0m available on request.

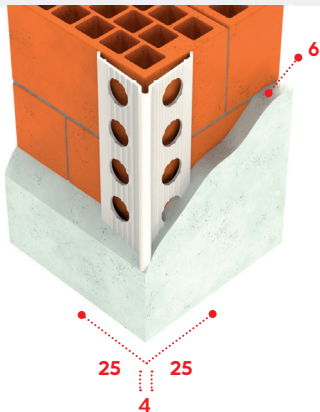
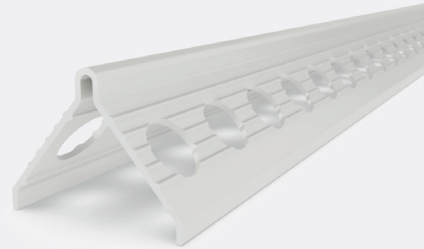
S25

Corner Bead

25mm wing, 6mm render/plaster depth

CE
EN13658-2



- uPVC
- White
- EN 13658-2



- Exterior grade uPVC corner bead for external render and also internal plaster applications.
- Provides rust-proof, high-impact-resistant and straight corners.
- Perforations allow material to easily flow through and bond to the substrate for a more durable corner.

Lenix S25	
1040	6mm

Length -m-			
2.5	2.6	2.8	3.0

Product Code	 Pcs / Ctn	 Pack / Pallet
	1040	100



For
Downloads

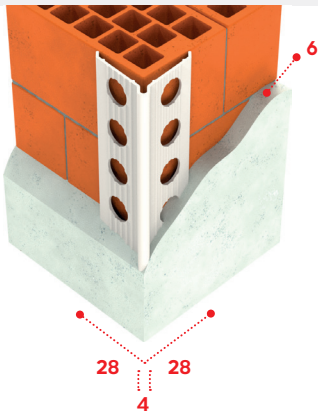
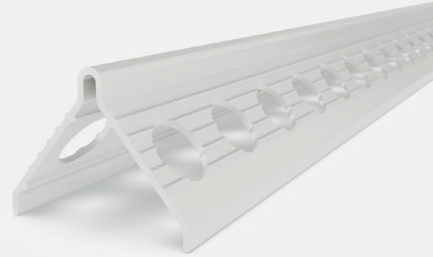
Other lengths between 2.0m and 3.0m available on request. ■

S25 XL Corner Bead

28mm wing, 6mm plaster/render finish

CE
EN13658-2

- uPVC
- White
- EN 13658-2



- Exterior grade uPVC corner bead for external render and also internal plaster applications.
- Provides rust-proof, high-impact-resistant and straight corners.
- Perforations allow material to easily flow through and bond to the substrate for a more durable corner.

Lenix S25 XL

1039 6mm

Length -m-

2.5 2.6 2.8 3.0

Product Code

1039



Pcs / Ctn

100



Pack / Pallet

40

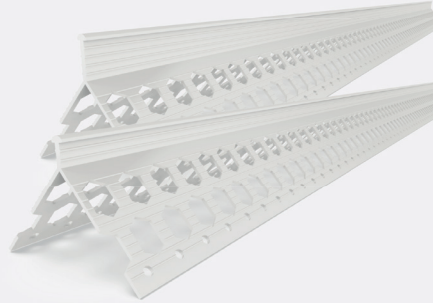
- Other lengths between 2.0m and 3.0m available on request.

V32

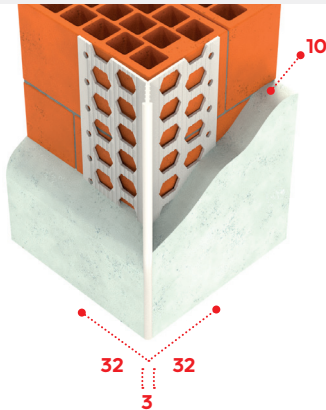
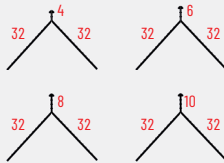
Corner Bead

32mm wing, 4-6-8-10mm plaster depth

CE
EN13658-2





- uPVC
- White
- EN 13658-2



- uPVC corner bead for internal plaster applications.
- Provides rust-proof, high-impact-resistant and straight corners.
- Perforations allow material to easily flow through and bond to the substrate for a more durable corner.

Lenix V32	
1033	10mm
1034	8mm
1035	6mm
1036	4mm

Length -m-		
2.5	2.7	3.0

Product Code		
	Pcs / Ctn	Pack / Pallet
1033	25	40
1034	30	40
1035	40	40
1036	50	40



For
Downloads

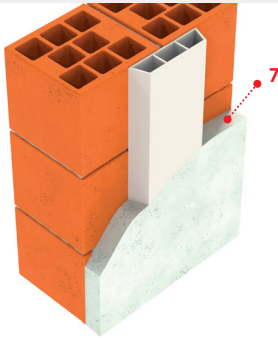
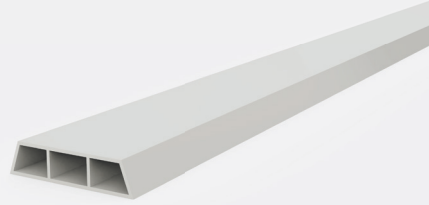
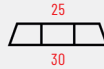
Other lengths between 2.0m and 3.0m available on request. ■

S7 Guide Profile



30mm wing, 7mm plaster depth

- uPVC
- White
- EN13658-2

CE
EN13658-2



➤ uPVC profile for ensuring quick & exact wall surfaces and consistent plaster depths.

Lenix S7		Length -m-	Product Code	 Pcs / Ctn	 Pack / Pallet
2424	7mm	2.0	2424	100	40

■ Other lengths between 2.0m and 3.0m available on request.



THERMAL INSULATION BEADS

Our new investment of **Ultrasonic Welding Technology**

Ultrasonic welding technology allows the mesh to be securely welded to the profile in ETICS applications, creating thermal joints and ensuring durable, long-lasting connections.

- Mesh Drip Beads
- Mesh Window Reveal Beads
- Mesh Render Stop Beads
- Base Clip-on Profiles
- Base Edge Profiles



Lenix joined the EAE family! With this collaboration, we aim to further our commitment to sustainability and quality, working together with Europe's largest ETICS community to develop innovative solutions.

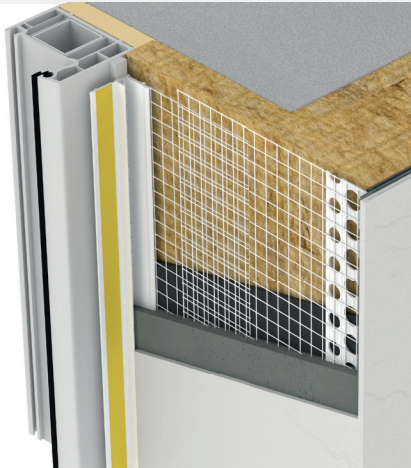
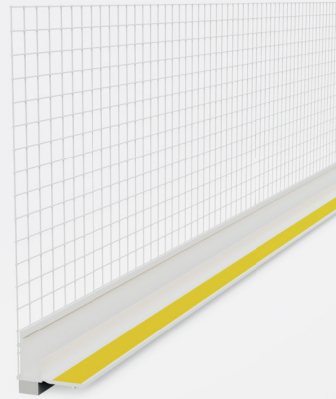
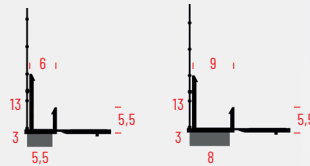
WR1F

Mesh Window Reveal Bead

6 or 9mm render depth

- uPVC
- 3mm UV-acrylate adhesive PE foam tape
- Tear-off flap with a self-adhesive transfer foil tape
- Ultrasonic-welded ETAG 004 145g/m² glass fibre mesh

CE
ETAG004



- Lenix WR1F Mesh Window Reveal Bead ensures an elastic, driving rain-proof connection between render and window/door frames in ETICS/EIFS/EWI systems, eliminating the need of sealants. 6mm and 9mm render depth of bead options available.
- The UV-acrylate based adhesive PE foam tape offers superior driving rain resistance, high adhesive strength and optimal aging resistance, while also allowing a high level of motion absorption. It is available in 3x5.5mm for 6mm render depth and 3x8mm for 9mm render depth.
- The tear-off flap with a self-adhesive transfer foil tape ensures secure attachment of the protective cover film, protecting windows/doors during rendering work. The protective flap is removed once the work is complete, leaving a clean plaster edge.
- ETAG 004 - 145g/m² glass fibre mesh with a 11cm width is ultrasonic-welded to the uPVC bead for improved reinforcement and crack resistance.

Lenix WR1F

Product Code	Render Depth	Color
1242	6mm	White
1244	9mm	White

Length -m-

2.4 2.5 2.6

Product Code

1242
1244



Pcs / Ctn

30
30



Pack / Pallet

40
40



For
Downloads

Other lengths between 2.0m and 3.0m available on request. ■

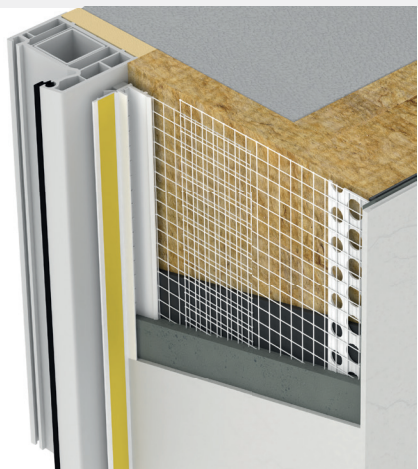
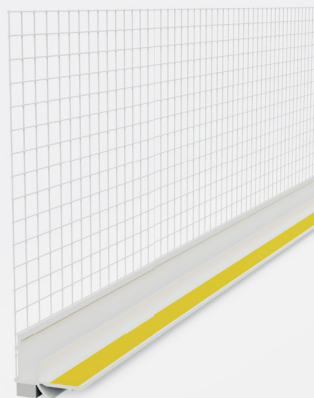
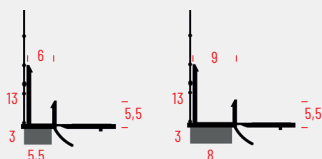
WR1F EXTRA

CE
ETAG004

Mesh Window Reveal Bead with Lip

6 or 9mm render depth, soft PVC elastic protective lip

- uPVC
- 3mm UV-acrylate adhesive PE foam tape
- Tear-off flap with a self-adhesive transfer foil tape
- Ultrasonic-welded ETAG 004 145g/m² glass fibre mesh



- Lenix WR1F EXTRA Mesh Window Reveal Bead with Lip ensures an elastic, driving rain-proof connection between render and window/door frames in ETICS/EIFS/EWI systems, eliminating the need of sealants. 6mm and 9mm render depth of bead options available.
- The elastic protective lip made of soft PVC protects the tape.
- The UV-acrylate based adhesive PE foam tape offers superior driving rain resistance, high adhesive strength and optimal aging resistance, while also allowing a high level of motion absorption. It is available in 3x5.5mm for 6mm render depth and 3x8mm for 9mm render depth.
- The tear-off flap with a self-adhesive transfer foil tape ensures secure attachment of the protective cover film, protecting windows/doors during rendering work. The protective flap is removed once the work is complete, leaving a clean plaster edge.
- ETAG 004 - 145g/m² glass fibre mesh with a 11cm width is ultrasonic-welded to the uPVC bead for improved reinforcement and crack resistance.

Lenix WR1F EXTRA

2788	6mm	White
2789	9mm	White

Length -m-

2.4 2.5 2.6

Product Code

2788
2789



Pcs / Ctn

30
30



Pack / Pallet

40
40

■ Other lengths between 2.0m and 3.0m available on request.

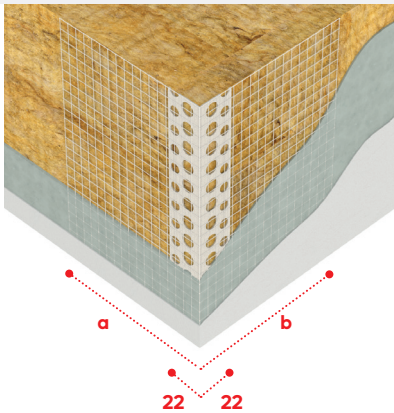
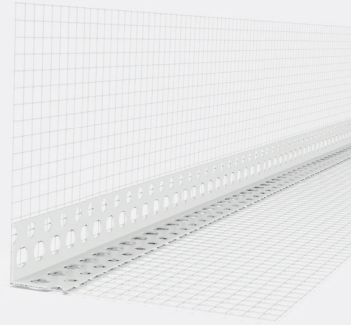
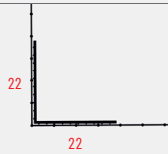
V22F

Mesh Corner Bead

22mm wing, mesh width of
10x30cm 10x23cm 10x15cm 10x10cm 8x12cm

CE
ETAG004



- uPVC
- 1.1mm thickness
- 145 g/m² glass fibre mesh
- White



- uPVC corner bead with mesh reinforces and protects corners in ETICS/EIFS/EWI systems, formed by insulation boards.
- Perforated wings on the bead ensure true corners with precise and neat edges.
- Glass fibre mesh to provide superior keying with the finishing coat and avoid cracking.

Lenix V22F	
1105	10x30cm
1104	10x23cm
1103	10x15cm
1102	10x10cm
1106	8x12cm

Length -m-
2.5

Product Code	 Pcs / Ctn	 Pack / Pallet
	1105	50
1104	50	28
1103	50	36
1102	50	42
1106	50	42

■ Brand logo imprint on-mesh available.



For
Downloads

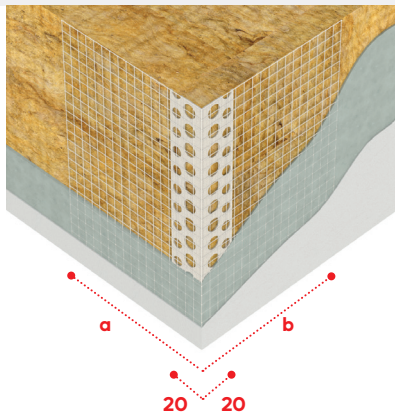
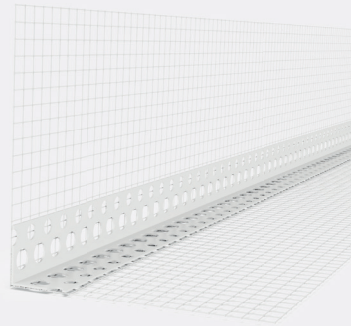
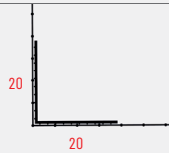
Other lengths between 2.0m and 3.0m available on request. ■

V20F Mesh Corner Bead

20mm wing, mesh width of
10x30cm 10x23cm 10x15cm 10x10cm 8x12cm

CE
ETAG004



- uPVC
- 1.0mm thickness
- 145 g/m² glass fibre mesh
- White



- uPVC corner bead with mesh reinforces and protects corners in ETICS/EIFS/EWI systems, formed by insulation boards.
- Perforated wings on the bead ensure true corners with precise and neat edges.
- Glass fibre mesh to provide superior keying with the finishing coat and avoid cracking.

Lenix V20F	
2465	10x30cm
2464	10x23cm
2463	10x15cm
2462	10x10cm
2444	8x12cm

Length -m-
2.5

Product Code	 Pcs / Ctn	 Pack / Pallet
	2465	50
2464	50	28
2463	50	36
2462	50	42
2444	50	42

- Mesh with customized logo imprint
- Custom lengths on request.

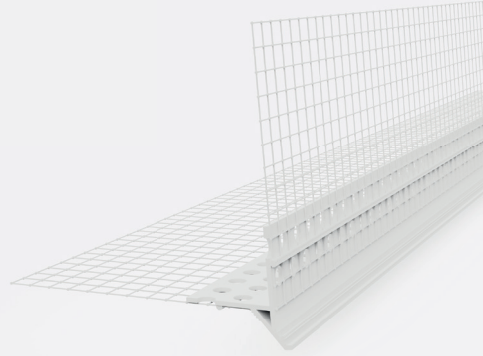
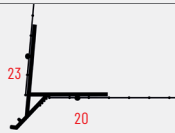
SHY

Mesh Drip Bead



Invisible drip edge, 6mm render depth

CE
ETAG004

- uPVC
- Ultrasonic-welded ETAG 004
145g/m² glass fibre mesh



- Exterior grade uPVC drip bead with mesh to form drip edges to protect insulated render systems from water penetration in ETICS/ EIFS/EWI systems.
- Designed to be used on the undersides of window heads & balconies.
- Drip edge to direct water away from openings and along the balcony & lintel soffits to assist with moving moisture/rainwater away from the wall.
- Grooved inner-surface for a better render grip.
- Ultrasonic-welded glass fibre mesh with a 10x10cm width for improved reinforcement and crack resistance.
- Provides a 6mm render depth for both base and final coats.
- Completely encapsulated in render.

Lenix SHY		Length -m-		Product Code	 Pcs / Ctn	 Pack / Pallet
2793	White	2.0	2.5	2793	25	30



For
Downloads

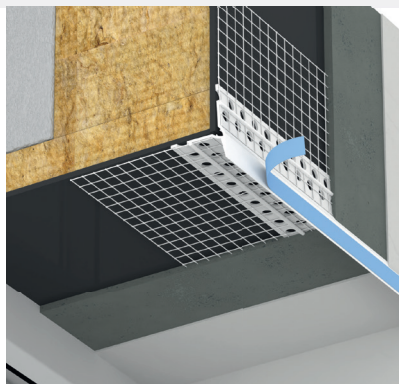
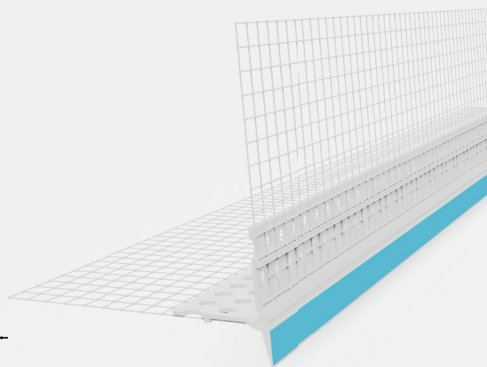
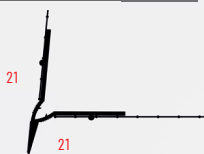
Other lengths between 2.0m and 3.0m available on request. ■

VIZZY Mesh Drip Bead

Visible drip edge, 4mm render depth

CE
ETAG004

- uPVC
- Ultrasonic-welded ETAG 004
145g/m² glass fibre mesh



- Exterior grade uPVC drip bead with mesh to form drip edges to protect insulated render systems from water penetration in ETICS/EIFS/EWI systems.
- Designed to be used on the undersides of window heads & balconies.
- Drip edge to direct water away from openings and along the balcony & lintel soffits to assist with moving moisture/rainwater away from the wall.
- Grooved inner-surface for a better render grip.
- Ultrasonic-welded glass fibre mesh with a 10x10cm width for improved reinforcement and crack resistance.
- Provides a 6mm render depth for both base and final coats.
- Protective film coating on drip leg to be removed whenever desired.

Lenix VIZZY		Length -m-		Product Code	Pcs / Ctn	Pack / Pallet
2791	White	2.0	2.5	2791	25	30

■ Other lengths between 2.0m and 3.0m available on request.

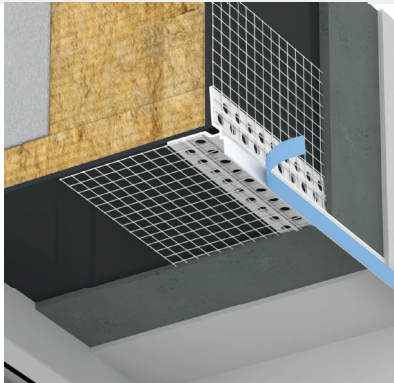
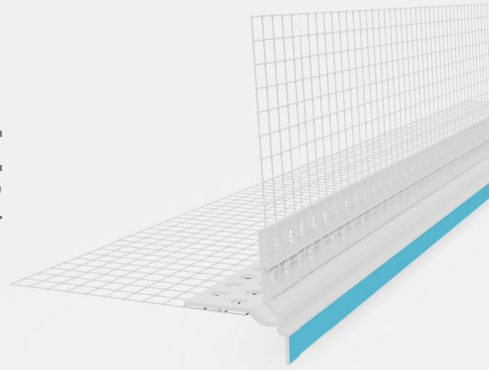
VIZZY PRO

Mesh Drip Bead



Visible drip edge, 5mm render depth

CE
ETAG004

- uPVC
- Ultrasonic-welded ETAG 004
145g/m² glass fibre mesh



- Exterior grade uPVC drip bead with mesh to form drip edges to protect insulated render systems from water penetration in ETICS/ EIFS/EWI systems.
- Designed to be used on the undersides of window heads & balconies.
- Drip edge to direct water away from openings and along the balcony & lintel soffits to assist with moving moisture/rainwater away from the wall.
- Grooved inner-surface for a better render grip.
- Ultrasonic-welded glass fibre mesh with a 10x10cm width for improved reinforcement and crack resistance.
- Provides a 6mm render depth for both base and final coats.
- Protective film coating on drip leg to be removed whenever desired.

Lenix VIZZY PRO		Length -m-		Product Code	 Pcs / Ctn	 Pack / Pallet
2792	White	2.0	2.5	2792	20	30



For
Downloads

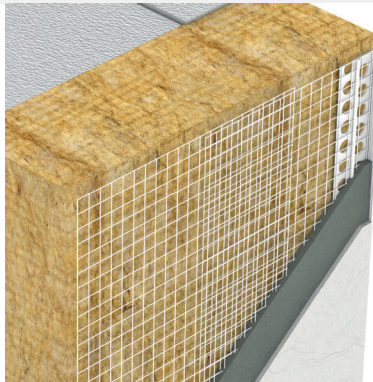
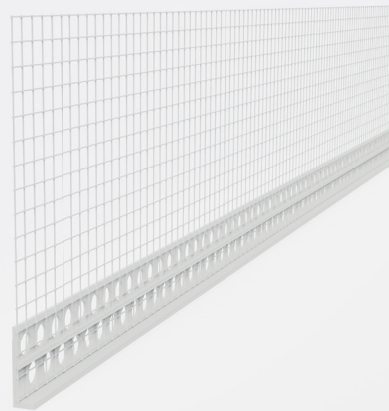
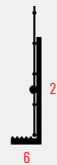
Other lengths between 2.0m and 3.0m available on request. ■

SF21 Mesh Render Stop Bead

Visible drip edge , 3 or 6mm render depth

CE
ETAG004



- uPVC
- Ultrasonic-welded ETAG 004
145g/m² glass fibre mesh



- Lenix SF21 Mesh Render Stop Bead ensures precise and straight finish in render and ETICS/EIFS/EWI systems by producing neat render edges. 3mm and 6mm render depth of bead options available.
- ETAG 004 - 145g/m² glass fibre mesh with a 10cm width is ultrasonic-welded to the uPVC bead for improved reinforcement and crack resistance.

Lenix SF21	
1130	3mm
1132	6mm

Length -m-		
2.0	2.4	2.5

Product Code	 Pcs / Ctn	 Pack / Pallet
	1130	25
1132	25	40

■ Other lengths between 2.0m and 3.0m available on request.

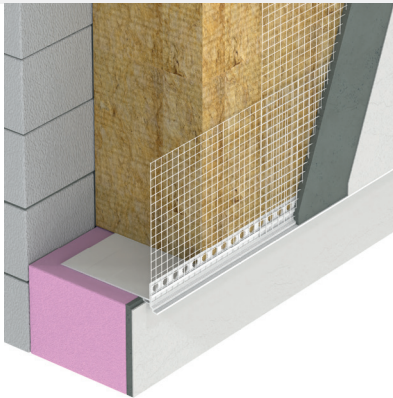
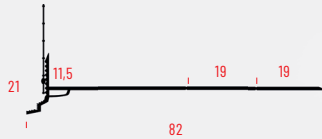
BE6

Base Edge Profile

6mm drip edge

CE
ETAG004



- uPVC
- Ultrasonic-welded ETAG 004
145g/m² glass fibre mesh



- Lenix BE6 Base Edge Profile is a thermal bridge-free plinth profile with a drip edge, providing a seamless transition between façade insulation and plinth insulation in ETICS/EIFS/EWI systems.
- Targeted drainage of rainwater. Precise edge formation.
- Can be shortened from 80mm to 60 or 40mm using the breaking edge. It provides a clean, precise finish for ETICS/EIFS/EWI systems.
- ETAG 004 - 145g/m² glass fibre mesh with a 10cm width is ultrasonic-welded to the uPVC bead for improved reinforcement and crack resistance.

Lenix BE6	
2790	80mm

Length -m-		
2.0	2.4	2.5

Product Code		
	Pcs / Ctn	Pack / Pallet
2790	25	40



For
Downloads

Other lengths between 2.0m and 3.0m available on request. ■

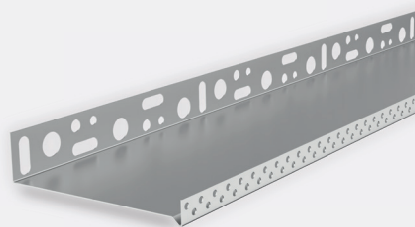
A1

Starter Track



30x15mm, for insulation of 30 - 300mm





- Aluminium
- 1.0mm and 0.8mm thickness
- ETAG 004



- Aluminium base profile for starting ETICS/EIFS/EWI systems.
- Integrated drip edge to safeguard insulation from rising moisture.
- Provides targeted water drainage and flush alignment for a clean, straight and sturdy base support.
- Designed for use along the plinth area to help divert moisture/rainwater away from foundation walls.

1.0mm				
-w- Insulation	Product Number	Length	Pcs / Bun	Pack / Pallet
30 mm	2821	2.5m	10	121
40 mm	2822	2.5m	10	108
50 mm	2823	2.5m	10	77
60 mm	2824	2.5m	10	86
70 mm	2825	2.5m	10	90
80 mm	2826	2.5m	10	65
90 mm	2827	2.5m	10	60
100 mm	2828	2.5m	10	54
110 mm	2504	2.5m	10	45
120 mm	2829	2.5m	10	45
130 mm	2506	2.5m	10	40
140 mm	2830	2.5m	10	40
150 mm	2508	2.5m	10	36
160 mm	2831	2.5m	10	36
170 mm	2510	2.5m	10	31
180 mm	2832	2.5m	10	31
190 mm	2512	2.5m	10	30
200 mm	2833	2.5m	10	30

0.8mm				
-w- Insulation	Product Number	Length	Pcs / Bun	Pack / Pallet
30 mm	1166	2.5m	10	121
40 mm	1167	2.5m	10	108
50 mm	1168	2.5m	10	77
60 mm	1169	2.5m	10	86
70 mm	1170	2.5m	10	90
80 mm	1171	2.5m	10	65
90 mm	1172	2.5m	10	60
100 mm	1173	2.5m	10	54
110 mm	2514	2.5m	10	45
120 mm	1175	2.5m	10	45
130 mm	2515	2.5m	10	40
140 mm	1176	2.5m	10	40
150 mm	2516	2.5m	10	36
160 mm	1177	2.5m	10	36
170 mm	2517	2.5m	10	31
180 mm	1178	2.5m	10	31
190 mm	2518	2.5m	10	30
200 mm	1179	2.5m	10	30

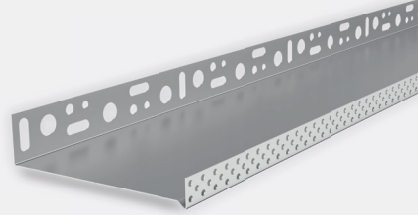
- Available to order in sizes up to 300mm.
- Custom lengths on request.

F1

Starter Track

35x20mm, for insulation of 30 - 300mm

CE
CPT3035





- Aluminium
- 1.2mm and 1.0mm thickness
- CPT 3035



- Aluminium base profile for starting ETICS/EIFS/EWI systems.
- Integrated drip edge to safeguard insulation from rising moisture.
- Provides targeted water drainage and flush alignment for a clean, straight and sturdy base support.
- Designed for use along the plinth area to help divert moisture/rainwater away from foundation walls.

1.2mm				
-w- Insulation	Product Number	Length	Pcs / Bun	Packs / Pallet
30 mm	2476	2.5m	20	121
40 mm	2477	2.5m	20	108
50 mm	2478	2.5m	20	77
60 mm	2479	2.5m	20	86
70 mm	2480	2.5m	20	90
80 mm	2481	2.5m	20	65
90 mm	2482	2.5m	20	60
100 mm	1216	2.5m	20	40
110 mm	2483	2.5m	10	45
120 mm	1218	2.5m	10	40
130 mm	2484	2.5m	10	40
140 mm	1220	2.5m	10	36
150 mm	2485	2.5m	10	36
160 mm	1222	2.5m	10	31
170 mm	2487	2.5m	10	31
180 mm	1224	2.5m	10	30
190 mm	2490	2.5m	10	30
200 mm	1226	2.5m	10	24

1.0mm				
-w- Insulation	Product Number	Length	Pcs / Bun	Pack / Pallet
30 mm	1193	2.5m	20	121
40 mm	1194	2.5m	20	108
50 mm	1195	2.5m	20	77
60 mm	1196	2.5m	20	86
70 mm	1197	2.5m	20	90
80 mm	1198	2.5m	20	65
90 mm	1199	2.5m	20	60
100 mm	1200	2.5m	20	50
110 mm	2491	2.5m	10	45
120 mm	1202	2.5m	10	45
130 mm	2492	2.5m	10	40
140 mm	1204	2.5m	10	40
150 mm	2493	2.5m	10	36
160 mm	1206	2.5m	10	36
170 mm	2494	2.5m	10	31
180 mm	1208	2.5m	10	31
190 mm	2495	2.5m	10	30
200 mm	1210	2.5m	10	30

Available to order in sizes up to 300mm. ■

Custom lengths on request. ■



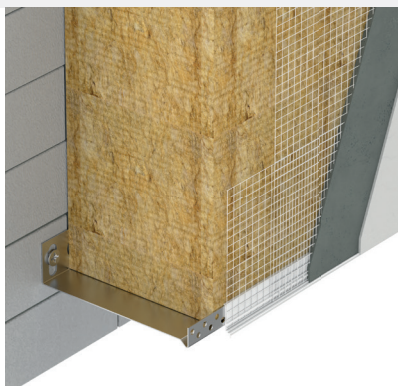
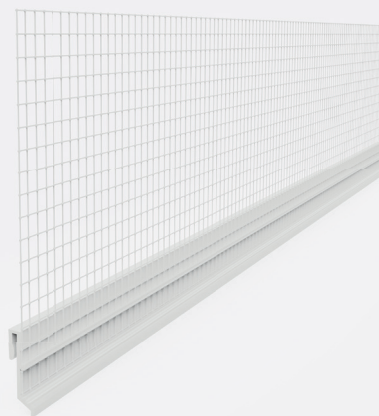
For
Downloads

ON1 Base Clip-on Profile

Drip edge, 6mm render depth

CE
ETAG004

- uPVC
- Ultrasonic-welded ETAG 004
145g/m² glass fibre mesh



- Lenix ON1 Base Clip-on Profile bridges the joint area of aluminum starter tracks, ensuring the required reinforcement layer thickness in the plinth area. It provides a clean, precise finish for ETICS/EIFS/EWI systems.
- ETAG 004 - 145g/m² glass fibre mesh with a 10cm width is ultrasonic-welded to the uPVC bead for improved reinforcement and crack resistance.

Lenix ON1

1238 6mm

Length -m-

2.5

Product Code

1238



Pcs / Ctn

25



Pack / Pallet

72

■ Other lengths between 2.0m and 3.0m available on request.

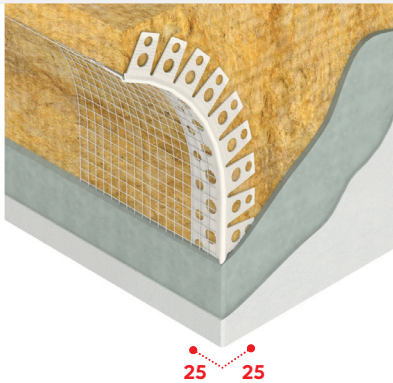
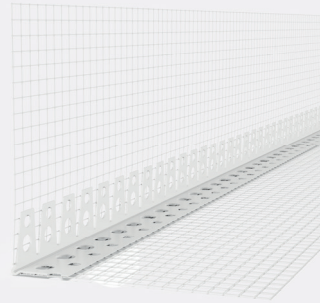
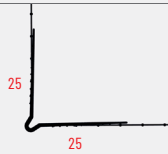
V23F-A

Mesh Arch Bead



25mm wing, mesh width of 10x10cm

CE
ETAG004

- uPVC
- 1.0mm thickness
- 145 g/m² glass fibre mesh
- White



- uPVC corner bead with mesh reinforces and protects arch corners and curves in ETICS/EIFS/EWI systems, formed by insulation boards.
- Perforated wings on the bead ensure true corners with precise and neat edges.
- Glass fibre mesh to provide superior keying with the finishing coat and avoid cracking.

Lenix V23F-A		Length -m-	Product Code	 Pcs / Ctn	 Pack / Pallet
1096	10x10cm	2.5	1096	50	36



For
Downloads

Other lengths between 2.0m and 3.0m available on request. ■

General Information

Quality and Guarantee

- **Lenix** guarantees, within general business terms, the proper material quality and the careful manufacture of the profiles.
- No responsibility or liability is accepted for errors or information that is found to be misleading. Suggestions, descriptions and application advises are only for information and **Lenix** accepts no liability in respect thereof.
- Because the composition and the chemical and physical properties of the plasters applied are out of our control, no guarantee can be accepted for the resistance of the profiles against corrosion. The compatibility of the plaster with the profiles must be ensured.
- Varying factors in the application of plaster make it necessary to adapt to the individual working conditions from case to case. This is the responsibility of the buyer. The term of guarantee for plaster profiles is six months, in compliance with the legal regulations on sales contracts, and begins on the date of delivery.
- Practical tests are the safest way to avoid possible mistakes, for which no guarantee can be given. Corrosion can only occur if the plasters are under permanent influence of humidity or if they dry too slowly. Make sure the plaster dries quickly by airing well.
- Storage and application instructions must always be observed and followed.

Type of Corrosion	Appearance	Cause
General corrosion	Brown	Steel with no protective coating exposed to the air.
Pitting corrosion	Brown/white	Effect of corrosion stimulators (e.g. chlorides) on metals, including stainless steel.
Contact corrosion	Brown/white	Contact between two different metals causing the less noble one to corrode.
White rust	White	Corrosion of aluminium.
Rust film	Orange/brown	Incipient surface corrosion in a thin layer. Often caused by moisture during storage or use.
Crevice corrosion	Brown	Caused by crevices in the metal surface.
Interlayer corrosion	Detachment of surface layer	Corrosion in the contact and surface layer, adhesion zone between metal surface and surface layer. Caused by corrosive behaviour of surface layer.



Lenix

Building Finishing Beads

Headquarter

Gebze Plastikçiler OSB
Atatürk Bulvarı 11. Cad. No:9
41400 Gebze, Kocaeli | Türkiye
T: +90 262 502 16 60

UK Office

167-169 Great Portland St.
5th floor, London W1W5PF
United Kingdom

Germany Office

Königsallee 92a / 4th floor
Düsseldorf 40212
Germany

www.isikgroup.com
www.lenix.com