



Declaration of Performance

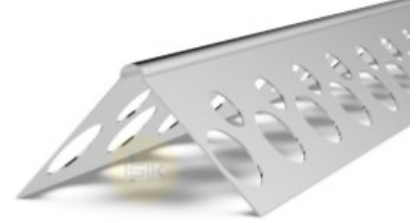
In accordance with the EU Construction Product Regulation 305/2011

Reference No: DOP.A4020

Revision Date: 30.04.2020

Revision No: 00

Page :1 of 1



1. Unique identification code of the product type	A40209300 A40209301 A40209302 A40209305
2. Intended use of the construction product	Corner Bead for Dry Lining
3. Construction product in accordance with applicable harmonised specifications	EN 14353: 2017
4. System of assessment and verification of consistency of performance ,as set out in Annex ZA	System 4 : For Essential Characteristics System 4 : For Reaction to Fire
5. Reaction of fire	Class A1
6. Dangerous substances	NDP " No Performance Determined".
7. Manufacturer	IŞIK Perde Rayları San. ve Tic. A.Ş Gebze Plastikçiler OSB 11.Cadde No:9 Gebze /KOCAELİ TÜRKİYE

The performance of this product is in conformity with the declared performance .This declaration of performance is issued under sole responsibility of the named manufacturer.

Signed for on behalf of the manufacturer by

Zafer Yılmaz, Factory Manager

Gebze Kocaeli, 30.04.2020

IŞIK

Perde Rayları

San. Ve Tic. A.Ş

Gebze Plastikçiler OSB

11. Cadde No:9

Gebze / KOCAELİ

Tel . +90 262 502 16 60

Fax. +90 262 502 16 60

isikgroup@isikgroup.com

www.isikgroup.com