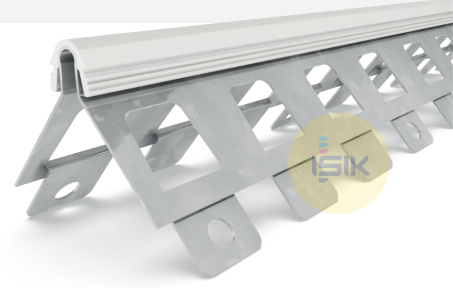


# DECLARATION of PERFORMANCE

In accordance with the EU Construction Product Regulation 305/2011  
Reference No: DOP.G1081  
Revision No: 00

## G1081 Corner Bead



1. Unique identification code of the product type

**G108155W3  
G108155J3**

2. Intended use of the construction product

**Corner Bead for Exterior Plastering**

3. Construction product in accordance with applicable harmonised specifications

**EN 13658-2: 2005**

4. System of assesment and verification of consistency of performance, as set out in Annex ZA

**System 4 : For Essential Characteristics  
System 4 : For Reaction to Fire**

5. Reaction of fire

Class E

6. Dangerous substances

NDP "No Performance Determined."

7. Manufacturer

**IŞIK Perde Rayları San. ve Tic. A.Ş.**  
Gebze Plastikçiler OSB 11. Cadde  
No:9 Gebze/KOCAELİ TÜRKİYE

The performance of this product is in conformity with the declared performance. This declaration of performance is issued under sole responsibility of the the named manufacturer.

Signed for behalf of the manufaturer by

**Zafer YILMAZ** / Factory Manager  
Gebze Kocaeli, 30.04.2020



**MANUFACTURER:**  
Gebze Plastikçiler OSB, Atatürk Bulvarı 11.  
Cad. No:9 Gebze 41400, Kocaeli - Türkiye  
T: +90 262 502 16 60  
isikgroup.com