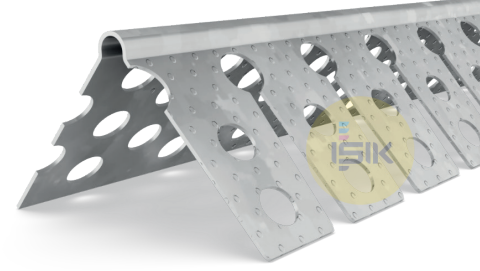


DECLARATION of PERFORMANCE

In accordance with the EU Construction Product Regulation 305/2011
Reference No: DOP.G4002
Revision No: 00

G4002 Arch Bead



1. Unique identification code of the product type

**G400213X0
G40021300**

2. Intended use of the construction product

Arch Bead for Dry Lining

3. Construction product in accordance with applicable harmonised specifications

EN 14353: 2017

4. System of assesment and verification of consistency of performance, as set out in Annex ZA

**System 4 : For Essential Characteristics
System 4 : For Reaction to Fire**

5. Reaction of fire

Class A1

6. Dangerous substances

NDP "No Performance Determined."

7. Manufacturer

IŞIK Perde Rayları San. ve Tic. A.Ş.
Gebze Plastikçiler OSB 11. Cadde
No:9 Gebze/KOCAELİ TÜRKİYE

The performance of this product is in conformity with the declared performance. This declaration of performance is issued under sole responsibility of the the named manufacturer.

Signed for behalf of the manufaturer by

Zafer YILMAZ / Factory Manager
Gebze Kocaeli, 30.04.2020



MANUFACTURER:
Gebze Plastikçiler OSB, Atatürk Bulvarı 11.
Cad. No:9 Gebze 41400, Kocaeli - Türkiye
T: +90 262 502 16 60
isikgroup.com