

DECLARATION of PERFORMANCE

In accordance with the EU Construction Product Regulation 305/2011
Reference No: DOP.G4210
Revision No: 00

G4210 Edging Bead

1. Unique identification code of the product type
2. Intended use of the construction product
3. Construction product in accordance with applicable harmonised specifications
4. System of assesment and verification of consistency of performance, as set out in Annex ZA
5. Reaction of fire
6. Dangerous substances
7. Manufacturer

G42101301

Edging Bead for Dry Lining

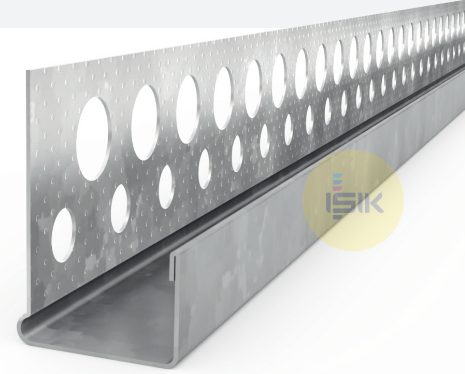
EN 14353: 2017

**System 4 : For Essential Characteristics
System 4 : For Reaction to Fire**

Class A1

NDP "No Performance Determined."

IŞIK Perde Rayları San. ve Tic. A.Ş.
Gebze Plastikçiler OSB 11. Cadde
No:9 Gebze/KOCAELİ TÜRKİYE



The performance of this product is in confirmity with the declared performance. This declaration of performance is issued under sole responsibility of the the named manufacturer.

Signed for behalf of the manufaturer by

Zafer YILMAZ / Factory Manager
Gebze Kocaeli, 30.04.2020



MANUFACTURER:
Gebze Plastikçiler OSB, Atatürk Bulvarı 11.
Cad. No:9 Gebze 41400, Kocaeli - Türkiye
T: +90 262 502 16 60
isikgroup.com