



PROFILES

Plaster

Dry Lining

External Thermal Insulation





Content

Işık Group	2
General & Technical Information	4

Plaster

Corner Beads	10
Stop Beads	17
Depth Gauge Beads	18

Dry Lining

Corner Beads	21
Stop Beads	28
Edging Beads	29

External Thermal Insulation

Corner Beads with Mesh	31
------------------------	----



Efforts for Better
9.000 sqm plant,
Gebze,Kocaeli | TURKEY

Reliable Manufacturer

In our Kocaeli facility, our experienced production team working day and night to keep constant production in extrusion, steel and fibre mesh corner to aim quality like how we promise to our partners because our reliable production is our significative feature for abroad and domestic market.

Long-term Supplier

As a more than a half-century company, we aware that our commercial relationship between our clients needs to be on a win-win situation that's our first mentality since our establishment. We are showing our finest effort on service and quality to increase mutual benefits with our partners.

Products with Quality

In our type of manufacturing system, quality control is the most important hallmark to keep persistence in the production department. Our standards need to meet up with EN Standards, for instance, the thickness, wing dimension, and packaging of the profiles. We are aware that, these quality standards are made difference and directly affect our partners' businesses. We develop our quality department every day to cath these standards and serve the best to our partners.

Fast & Good Service

Our company mentality focuses on delivering the goods on time with promised quality that's the reason our supply and production chain system created to answer our partners' needs the shortest time. Fast service means happy customers and more profitable businesses for them!

PVC EXTRUSION
7.000
tons per year



CORNER BEADS WITH MESH
54.000.000
meters per year





METAL BEADS
5.500
tons per year



WAREHOUSE
1.500
pallettes capacity



Make sure that you choose the most suitable profile material and plaster mortar according to the application area to avoid excessive risks, claims and consequential damage.

To prevent bimetallic corrosion, ensure that all metal components used in a given installation are of the same material type.

Please ensure sufficient aeration to prevent corrosion and accelerate the drying time.

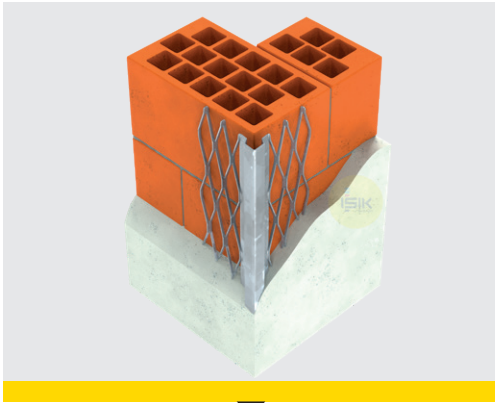
Avoid damage to beads when trowelling plaster or render.

Care should also be taken to prevent mechanical damage to the galvanised coating.

The substrate must be dry, clean, dust-free and absorbent and load-bearing in accordance with the requirements of the plaster coats to be applied.

The wall surface must not contain salts or foreign substances and efflorescence must be removed.

In general, metal beads should be kept dry and stored flat.



Galvanised Beads

Manufactured with DX51D+Z galvanised steel strips with zinc coating in accordance to **EN 10346**.

Z275 Zinc coating of 275 g/m² on both sides. Meets EN 13658 parts 1&2 and EN 14353 applications.

Z100 Zinc coating of 100 g/m² on both sides. Meets EN 14353 applications.

Z60 Zinc coating of 60 g/m² on both sides. Meets no standard.

Application Areas:

- Suitable for interior applications.
- Not suitable for external applications unless secondary protection against corrosion is provided.
- Not permitted for areas exposed to high moisture and damp after application.
(houses in wooded areas, wet rooms, swimming pools and domestic bathrooms etc.)

Compatibility:

- Suitable for lime, cement, lime-cement or gypsum based plaster applications.

Installation:

- Should be fixed with plaster or render dabs. Adhesive mortars with set accelerators containing chlorides are not suitable for fixing galvanised profiles.
- Not resistant to corrosion when using top coats of less than 3mm depth in exterior areas.
- Should not come into contact with aluminium or stainless steel profiles.
- Cut with hand plate shears across the wings and a fine toothed saw across bead noses.
- Should be fixed in accordance with embedding the bead's wings into the plaster.



Galvanised Beads with PVC nose

Manufactured with DX51D+Z galvanised steel strips with zinc coating of 275 g/m² on both sides in accordance to **EN 10346** and protective **PVCu nose**. PVC nose adds protection and a maintenance free finish.

Application Areas:

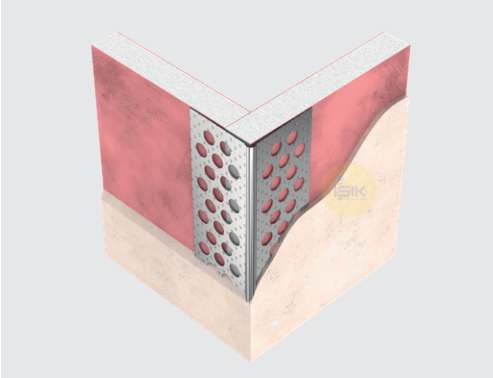
- Suitable for exterior applications and in conditions with high moisture and damp.
(houses in wooded areas, bathrooms, etc.)
- Not suitable for exposed coastal locations or corrosive environments.

Compatibility:

- Suitable for lime or cement based renders, scratch renders, pasty finishing coats.

Installation:

- Should be mechanically fixed with stainless clout nails or with cement based mortar, no plaster.
- May not be plastered over. PVC nose must be cleaned off immediately after plastering.
- Take off nails eventually used for fixing of the profiles before plastering.
- Cut with hand plate shears across the wings and a fine toothed saw across bead noses.



Natural Aluminium Beads

Manufactured with natural aluminium strips in accordance to **EN 485** and **EN 573**.

Application Areas:

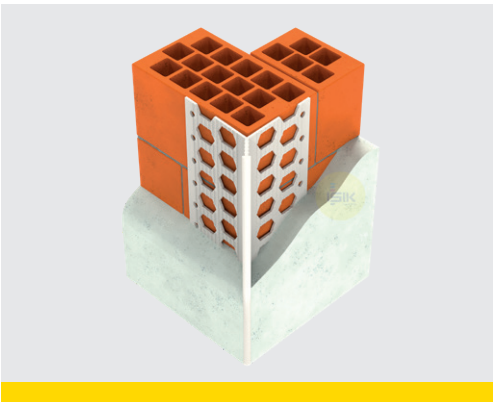
- Suitable for interior applications and thermal insulation systems.
- Not suitable for external applications unless made from white powder-coated aluminium which is suitable for use with mineral render systems and with epoxy, silicone or silicate render systems.

Compatibility:

- Suitable for gypsum and synthetic resin plaster applications.
- Not suitable for cement and lime-based plasters unless coated with base coating.

Installation:

- Should be fixed with plaster in the same quality as the base coat.
- Cut with hand plate shears across the wings and a fine toothed saw across bead noses. Never with a blade.



PVCu Beads

Extruded with **impact resistant, %0 recycled content** and **high quality** rigid PVC.

- Economical alternative to stainless steel for external applications.
- Superior corrosion resistance unlike galvanized beads.
- Unsharp edges prevent injuries.
- Convenient, easy to cut lengths on site.
- Light and easy to transport.
- Resistant to breakage.

Application Areas:

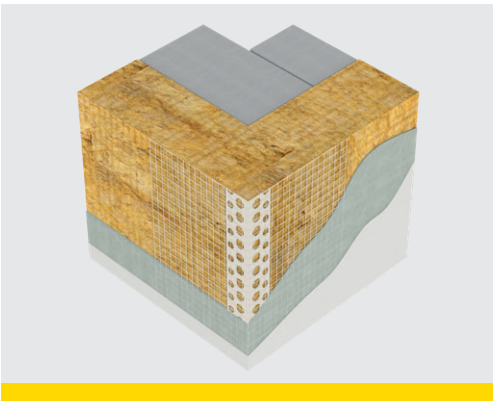
- Precise solution for interior areas exposed to high moisture and damp after application.
(houses in wooded areas, wet rooms, swimming pools and domestic bathrooms etc.)
- Suitable for exposed coastal locations or corrosive environments.

Compatibility:

- Suitable for external applications with appropriate cement based renders.

Installation:

- Should be fixed with plaster in interior applications.
- Should be fixed with cement based adhesive mortar dabs in exterior applications.
- Cut using a fine-toothed hacksaw across bead noses.



PVCu Beads with Mesh

Extruded with **impact resistant, %0 recycled content, high quality** rigid PVC and reinforcement alkali-resistant glass fibre mesh.

- **ETAG 004** certified 145 g/m² reinforcement alkali-resistant E-glass fibre mesh.
- High quality 145, 110, 75 g/m² reinforcement alkali-resistant glass fibre mesh.
- Strong adhesion of bead and glass fibre mesh with transparent hot-melt glue.

Application Areas:

- Suitable for ETICS, EWI and EIFS applications.

Installation:

- Should be pushed into the first base coat layer.
- Cut using a fine-toothed hacksaw across bead noses.

The most appropriate bead should be specified in accordance with the application, required plaster depth and desired finish. You may refer to the below statements regarding the explanations, headings, drawings and tables.

Application Areas

Interior plaster:	Plaster for indoor applications.
Exterior plaster:	Render for outdoor applications.
Dry Lining:	Gypsum, drywall finishing.
ETICS:	External Thermal Insulation Composite System
EIFS:	External Insulation and Facade System
EWI:	External Wall Insulation

Tolerances

Plaster depth with a tolerance of $\pm 1\text{mm}$,
Material thickness with a tolerance of $\pm 1\text{mm}$,
Wing width with a tolerance of $\pm 1\text{mm}$ in total,
Length with a tolerance of $\pm 10\text{mm}$.

European Standards

EN 13658-1:	Metal lath and beads - Definitions, requirements and test methods - Part 1: Internal plastering
EN 13658-2:	Metal lath and beads - Definitions, requirements and test methods - Part 2: External plastering
EN 14353:	Metal beads and feature profiles for use with gypsum plasterboards - Definitions, requirements and test methods

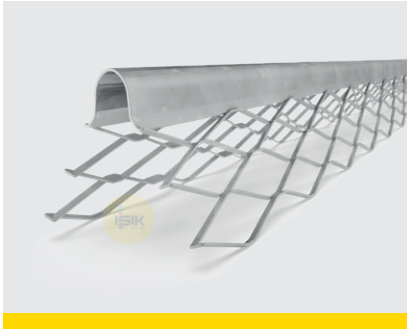
Technical Documents

If the requested profile meets the requirements of the related standard, DoP (Declaration of Performance) can be asked for. Otherwise, **TDS (Technical Data Sheet)** can only be obtained.

Plaster Depth

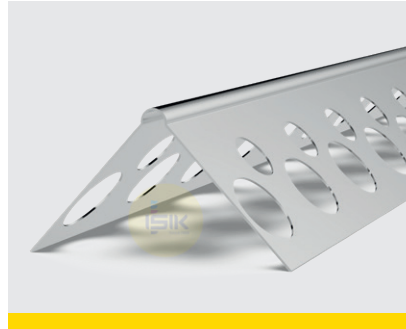
Refer to the minimum depth with a tolerance of $\pm 1\text{ mm}$ without fixing material. The minimum depth is to be controlled at the fixing of the profile and in case of differences to be claimed immediately. Claims after the finishing of the plaster work can not be accepted.

Surface Treatments



Expanded mesh

Flanges can be easily flexed over irregular, uneven surfaces with a significant cost advantage.



Perforated smooth surface

Holes allow gypsum to penetrate through the bead to the drywall.



Mini mesh

Fine mesh wings to provide an excellent plastering key.



Perforated embossed surface

Embossed surface increases profile stability and improves plaster embedding.



Square Hole

Large holes allow plaster or render to penetrate through the bead to the surface.



Bundle (bun)



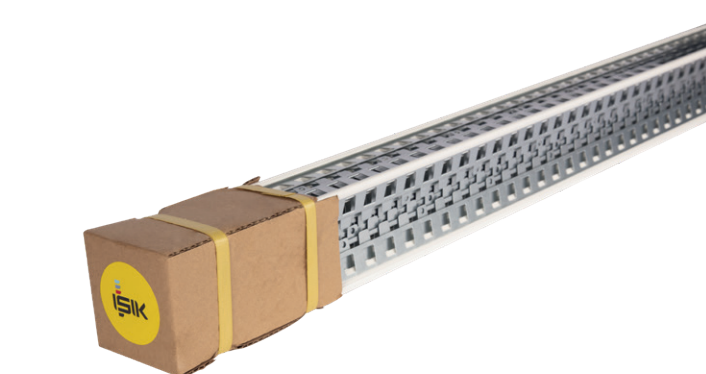
Paper edge protector (pep)



Cardboard box (cts)



PE foil bag (fbg)



shrink film (shf)

*All delivery terms are Ex-Works if any other agreement does not exist.

**Orders of each article will be accepted and delivered as pallets.

***Our pallet quality meets with Provisions of Regulation about Marking of Wooden Packaging Marketing, as prepared for ISPM 15 Standard. Please ask this marking permission certificate to your export representative.



Pallet for Galvanised, Aluminium and PVCu Beads
Orders should be replaced as 3 pallets or multiples of 3.



Pallet for PVC beads with mesh in cartons&steel cardboard boxes.
Orders should be replaced as 3 pallets or multiples of 3.



Pallet for PVC beads with mesh in cartons or foil bags
Orders should be replaced as 2 pallets or multiples of 2.

PLASTER

Corner Beads

G1071	G1090
G1081	G1000
P1010	G1001
P1020	G1020
P1000	G1021
P1001	G1030
P1002	G1040
P1003	A1040
P1030	G1041
P1031	G1050
P1040	
P1041	
P1042	

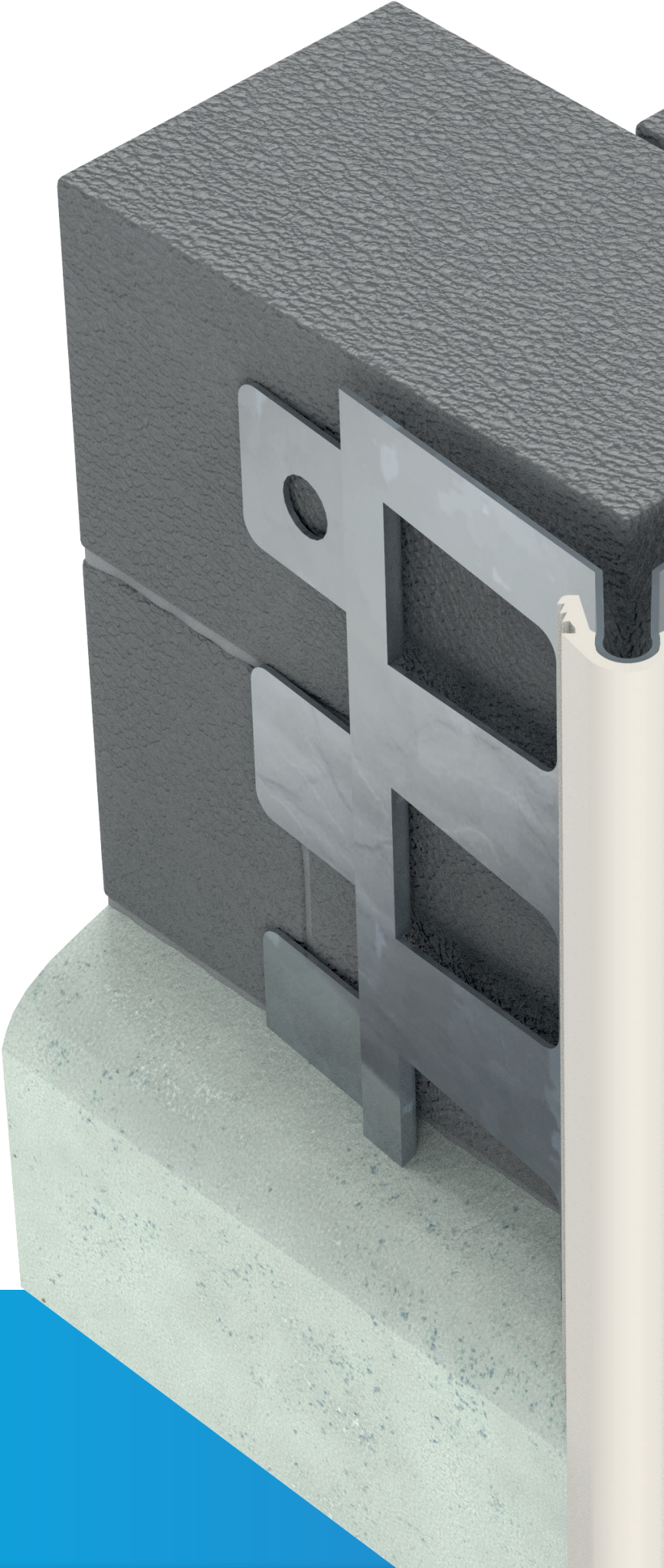
Stop Beads

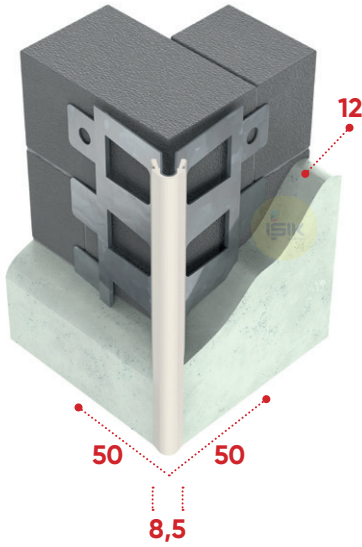
G1200
G1210
G1220
A1220
G1230

Depth Gauge Beads

G1401
G1400
A1400
G1410
A1410

G: Galvanised Steel | A: Aluminium | P: PVCu





G1071

Galvanised Steel
Corner Bead
with PVC nose

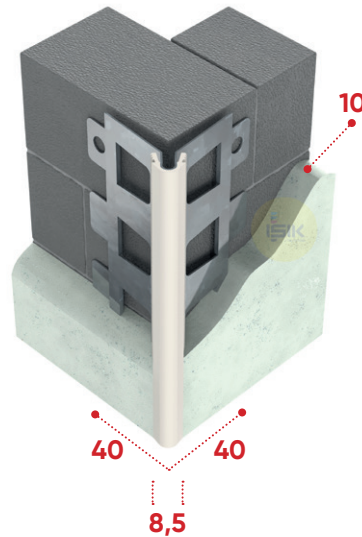
50x50 mm wings | Square hole
Exterior plaster | 12 mm plaster depth

Provides true and straight arris. Prevents chipping and cracking to vulnerable corners. PVCu extruded nosing to protect the edge/arris of the bead during application.

*Please refer to "Materials" page in order to avoid any corrosion problem.



Article Number	Material Thickness	Standards	Lengths	Pack/Pallet
G107155W3	0.50 mm Z275 white-nose	EN 13658-2	225, 250, 260, 270, 275, 280, 300 cm	15pcs/70shf



G1081

Galvanised Steel
Corner Bead
with PVC nose

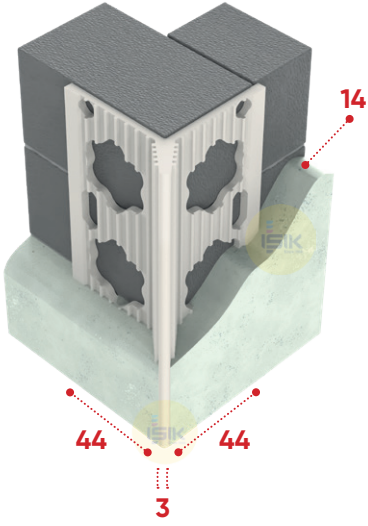
40x40 mm wings | Square hole
Exterior plaster | 10 mm plaster depth

Provides true and straight arris. Prevents chipping and cracking to vulnerable corners. PVCu extruded nosing to protect the edge/arris of the bead during application.

*Please refer to "Materials" page in order to avoid any corrosion problem.



Article Number	Material Thickness	Standards	Lengths	Pack/Pallet
G108155W3	0.50 mm Z275 white-nose	EN 13658-2	225, 250, 260, 270, 275, 280, 300 cm	15pcs/80shf
G108155J3	0.50 mm Z275 beige-nose	EN 13658-2	225, 250, 260, 270, 275, 280, 300 cm	15pcs/80shf



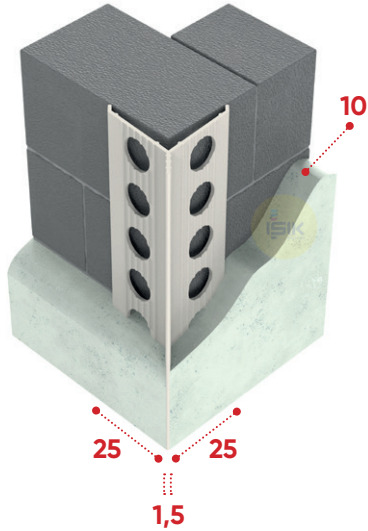
P1010

PVCu
Corner Bead
visible round edge

44x44 mm wings | 245 g/m weight
Exterior plaster | 14 mm plaster depth

Provides true and sharp exterior plastered corners. Its strong rigid arris protects and reinforces plaster against impact.
Visible arris: 3 mm

Article Number	Colour	Lengths	Pack/Pallet
P101000W8	White	270, 300 cm	15pcs/40cts



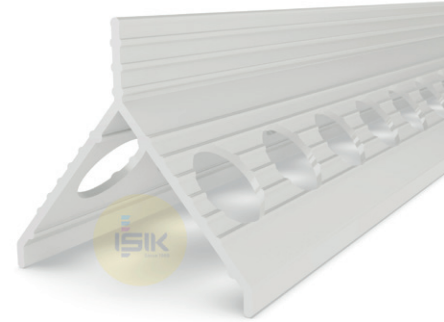
P1020

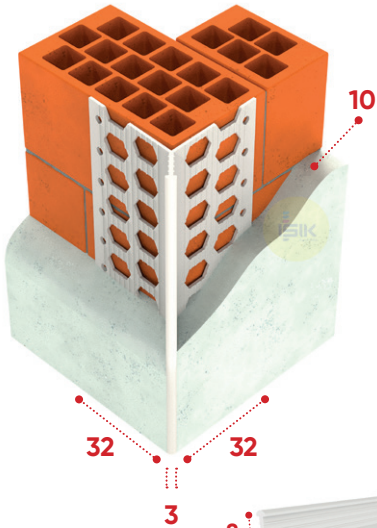
PVCu
Corner Bead
visible round edge

25x25 mm wings | 82 g/m weight
Exterior plaster | 10 mm plaster depth

Provides true and sharp exterior plastered corners. Its strong rigid arris protects and reinforces plaster against impact.
Visible arris: 1,5 mm

Article Number	Colour	Lengths	Pack/Pallet
P102000W8	White	250 cm	50pcs/40cts





P1000

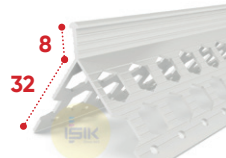
PVCu
Corner Bead
visible round edge

32x32 mm wings | 115 g/m weight
Interior plaster | 10 mm plaster depth

Provides true and sharp interior plastered corners. Its strong rigid aris protects and reinforces plaster against impact.
Visible aris: 3 mm



Article Number	Colour	Lengths	Pack/Pallet
P100000W1	White	250, 300 cm	50pcs/44cts



+ P1001 | 8 mm plaster depth | 110 g/m weight

P100100W1	White	250, 300 cm	50pcs/44cts
-----------	-------	-------------	-------------



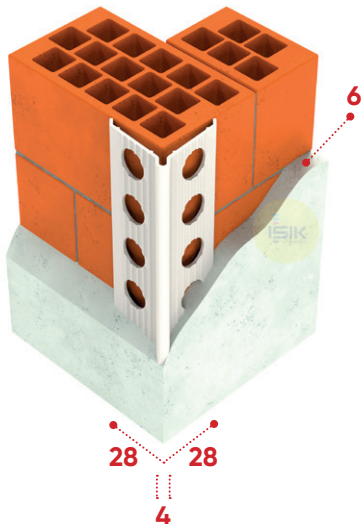
+ P1002 | 6 mm plaster depth | 105 g/m weight

P100200W8	White	250, 300 cm	40pcs/40cts
-----------	-------	-------------	-------------



+ P1003 | 4 mm plaster depth | 85 ± 2 g/m weight

P100300W8	White	250, 300 cm	50pcs/40cts
-----------	-------	-------------	-------------

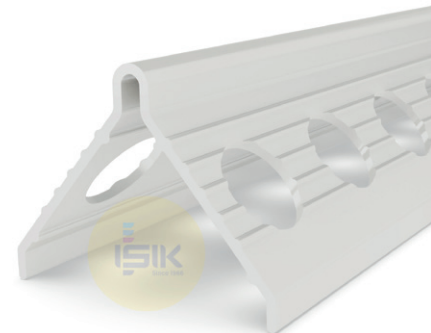


P1030

PVCu
Corner Bead
round edge

28x28 mm wings | 82 g/m weight
Interior / Exterior plaster | 6 mm plaster depth

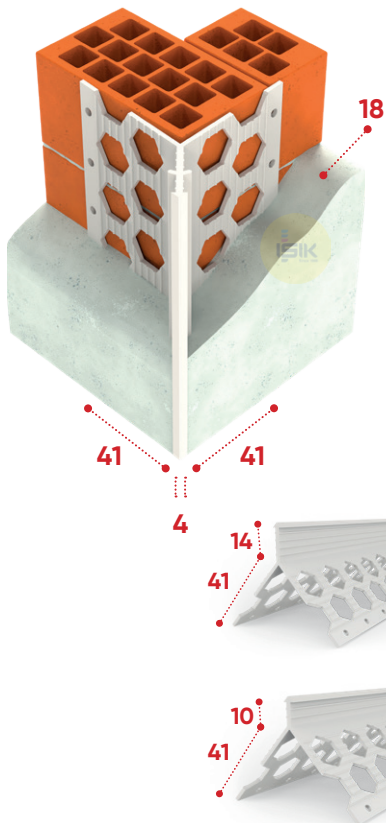
Provides true and round interior - exterior plastered corners.



Article Number	Colour	Lengths	Pack/Pallet
P103000W0	White	200, 250, 260, 265, 270, 280, 300 cm	100pcs/48cts

+ P1031 | 25x25 mm wings | 65 g/m weight

P103100W0	White	200, 250, 260, 265, 270, 280, 300 cm	100pcs/60cts
-----------	-------	--------------------------------------	--------------

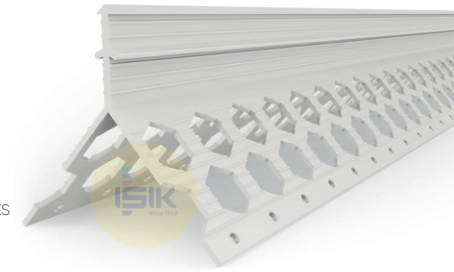


P1040

PVCu
Corner Bead
visible round edge

41x41 mm wings | 230 g/m weight
Interior plaster | 18 mm plaster depth

P1040 provides true and sharp interior - exterior plastered corners. Its strong rigid arris protects and reinforces plaster against impact.



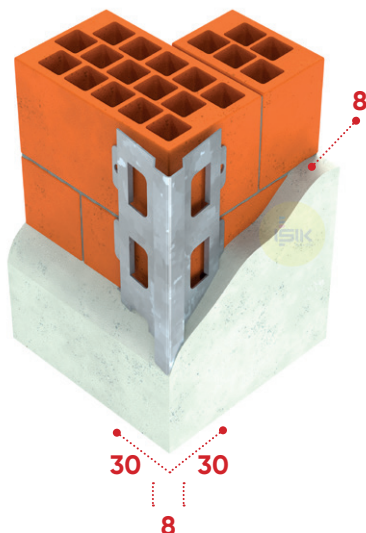
Article Number	Colour	Lengths	Pack/Pallet
P104100W8	White	250, 300 cm	25 pcs

+ P1041 | 14 mm plaster depth | 205 g/m weight

P104100W8	White	250, 300 cm	25 pcs
-----------	-------	-------------	--------

+ P1042 | 10 mm plaster depth | 177 g/m weight

P104200W8	White	250, 300 cm	40cts
-----------	-------	-------------	-------



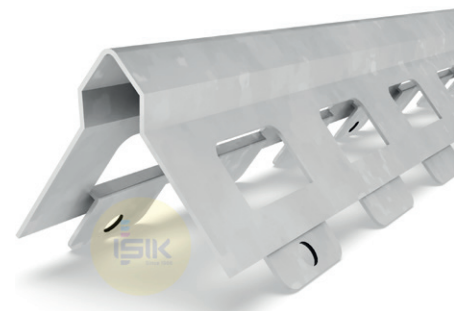
G1090

Galvanised Steel
Corner Bead
angular edge

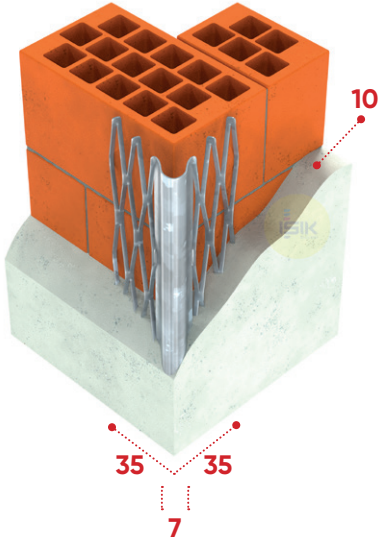
30x30 mm wings | Square hole
Interior plaster | 8 mm plaster depth

Provides true and straight arris. Prevents chipping and cracking to vulnerable corners.

*Please refer to "Materials" page in order to avoid any corrosion problem.



Article Number	Material Thickness	Standards	Lengths	Pack/Pallet
G10905503	0.50 mm Z275	EN 13658-1	200, 225, 250, 260, 270, 275, 280, 300 cm	25pcs/80shf

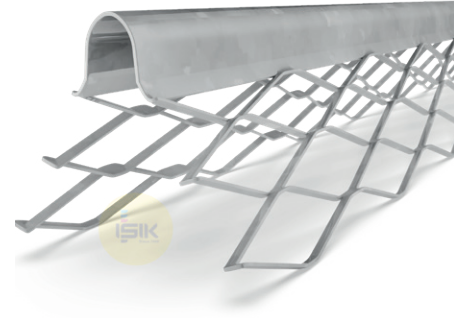


G1000

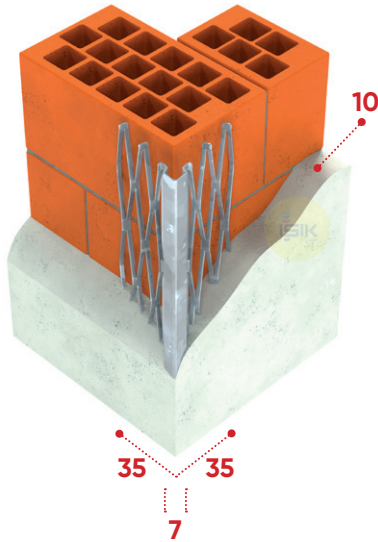
Galvanised Steel
Corner Bead
round edge

35x35 mm wings | 5 mesh
Interior plaster | 10 mm plaster depth

Provides true and straight arris. Prevents chipping and cracking to vulnerable corners. The expanded metal meshes ensure that the bead is firmly embedded in the plaster. Flanges can be easily flexed over irregular, uneven surfaces with a significant cost advantage.
*Please refer to "Materials" page in order to avoid any corrosion problem.



Article Number	Material Thickness	Standards	Lengths	Pack/Pallet
G10005500	0.50 mm Z275	EN 13658-1	150, 160, 180, 200, 220, 225, 240, 250, 260, 270, 275, 280, 300	25pcs/100bun

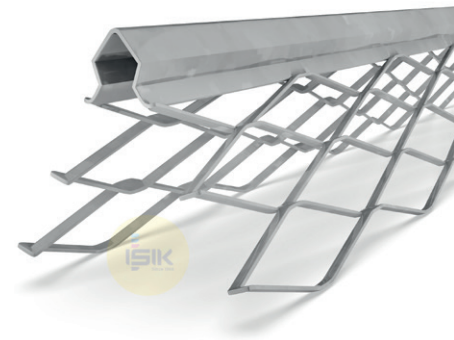


G1001

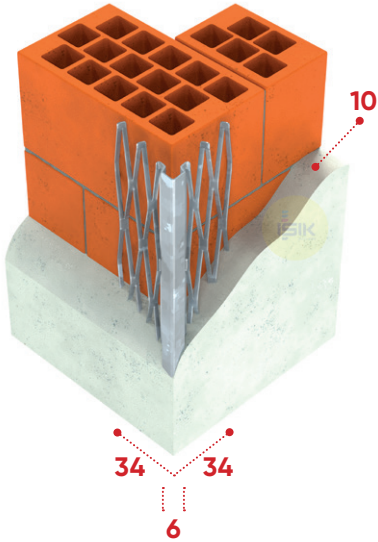
Galvanised Steel
Corner Bead
round edge

35x35 mm wings | 5 mesh
Interior plaster | 10 mm plaster depth

Provides true and straight arris. Prevents chipping and cracking to vulnerable corners. The expanded metal meshes ensure that the bead is firmly embedded in the plaster. Flanges can be easily flexed over irregular, uneven surfaces with a significant cost advantage.
*Please refer to "Materials" page in order to avoid any corrosion problem.



Article Number	Material Thickness	Standards	Lengths	Pack/Pallet
G10015500	0.50 mm Z275	EN 13658-1	150, 160, 180, 200, 220, 225, 240, 250, 260, 270, 275, 280, 300 cm	25pcs/100bun
G10015600	0.60 mm Z275	EN 13658-1	150, 160, 180, 200, 220, 225, 240, 250, 260, 270, 275, 280, 300 cm	25pcs/100bun



G1020

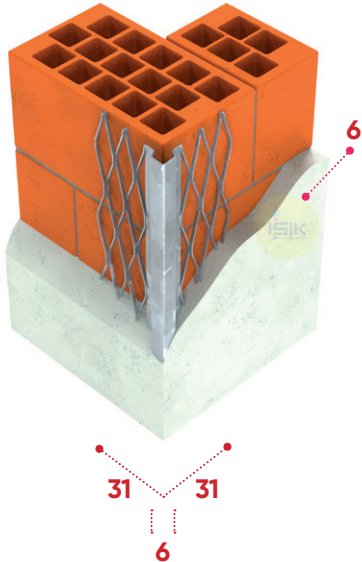
Galvanised Steel
Corner Bead
angular edge

34x34 mm wings | 5 mesh
Interior plaster | 10 mm plaster depth

Provides true and straight arris. Prevents chipping and cracking to vulnerable corners. The expanded metal meshes ensure that the bead is firmly embedded in the plaster. Flanges can be easily flexed over irregular, uneven surfaces with a significant cost advantage.
*Please refer to "Materials" page in order to avoid any corrosion problem.



Article Number	Material Thickness	Standards	Lengths	Pack/Pallet
G10205500	0.50 mm Z275	EN 13658-1	150, 160, 180, 200, 220, 225, 240, 250, 260, 270, 275, 280, 300 cm	25pcs/72bun (G10205501: (50pcs /50cts)

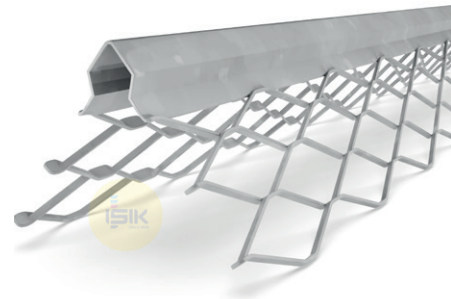


G1021

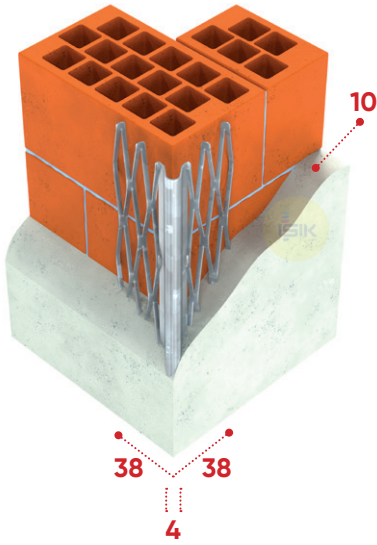
Galvanised Steel
Corner Bead
angular edge

31x31 mm wings | 5 mesh
Interior plaster | 6 mm plaster depth

Provides true and straight arris. Prevents chipping and cracking to vulnerable corners. The expanded metal meshes ensure that the bead is firmly embedded in the plaster. Flanges can be easily flexed over irregular, uneven surfaces with a significant cost advantage.
*Please refer to "Materials" page in order to avoid any corrosion problem.



Article Number	Material Thickness	Standards	Lengths	Pack/Pallet
G10215500	0.50 mm Z275	EN 13658-1	150, 160, 180, 200, 220, 225, 240, 250, 260, 270, 275, 280, 300 cm	25pcs/100bun
G10210200	0.35 mm Z100	-	150, 160, 180, 200, 220, 225, 240, 250, 260, 270, 275, 280, 300 cm	25pcs/100bun



G1030

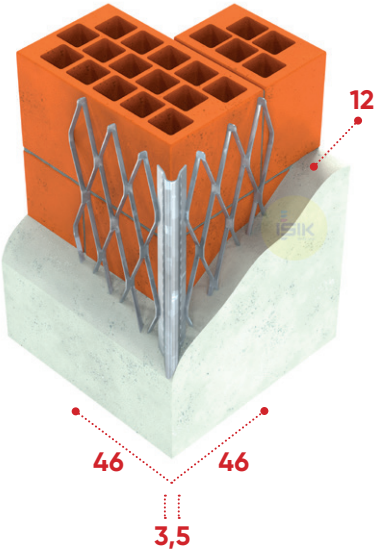
Galvanised Steel
Corner Bead
round edge

38x38 mm wings | 5 mesh
Interior plaster | 10 mm plaster depth

Provides true and straight arris. Prevents chipping and cracking to vulnerable corners. The expanded metal meshes ensure that the bead is firmly embedded in the plaster. Flanges can be easily flexed over irregular, uneven surfaces with a significant cost advantage.
*Please refer to "Materials" page in order to avoid any corrosion problem.



Article Number	Material Thickness	Standards	Lengths	Pack/Pallet
G10305500	0.50 mm Z275	EN 13658-1	150, 160, 180, 200, 220, 225, 240, 250, 260, 270, 275, 280, 300 cm	25pcs/100bun (G10305501: 50pcs / 50cts)



G1040

Galvanised Steel
Corner Bead
round edge

46x46 mm wings | 6 mesh
Interior plaster | 12 mm plaster depth

Provides true and straight arris. Prevents chipping and cracking to vulnerable corners. The expanded metal meshes ensure that the bead is firmly embedded in the plaster. Flanges can be easily flexed over irregular, uneven surfaces with a significant cost advantage.
*Please refer to "Materials" page in order to avoid any corrosion problem.



Article Number	Material Thickness	Standards	Lengths	Pack/Pallet
G10405500	0.50 mm Z275	EN 13658-1	250, 260, 270, 280, 300 cm	25pcs/100bun (G10405501: 50pcs / 40cts)
G10401300	0.40 mm Z100	-	250, 260, 270, 280, 300 cm	25pcs/100bun (G10401301: 50pcs / 40cts)

A1040 Aluminium Corner Bead

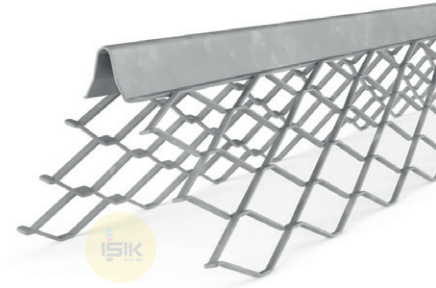
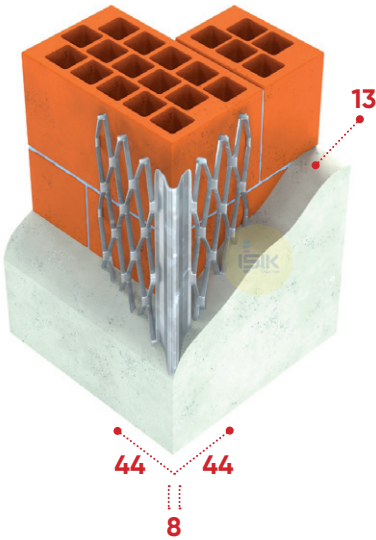
A10409500	0.50 mm	-	250, 260, 270, 280, 300 cm	25pcs/100bun (A10409501: 50pcs / 40cts)
-----------	---------	---	----------------------------	---

G1041

Galvanised Steel
Corner Bead
round edge

44x44 mm wings | 6 mesh
Interior plaster | 10-13 mm plaster depth

G1041 provides true and straight arris. Prevents chipping and cracking to vulnerable corners. The expanded metal meshes ensure that the bead is firmly embedded in the plaster. Flanges can be easily flexed over irregular, uneven surfaces with a significant cost advantage.
*Please refer to "Materials" page in order to avoid any corrosion problem.



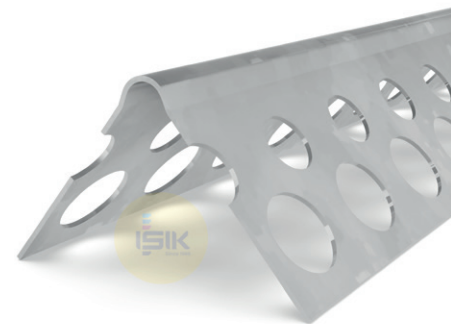
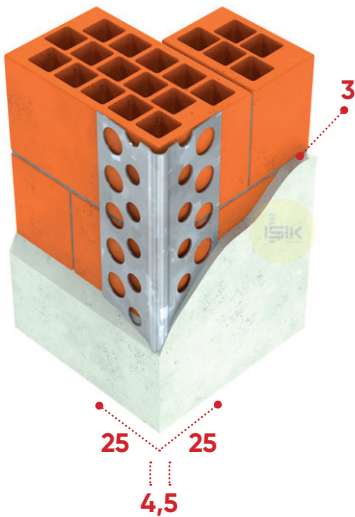
Article Number	Material Thickness	Standards	Lengths	Pack/Pallet
G10415508	0.50 mm Z275	EN 13658-1	240, 300 cm	50pcs/50cts
G10415308	0.40 mm Z275	EN 13658-1	240, 300 cm	50pcs/50cts

G1050

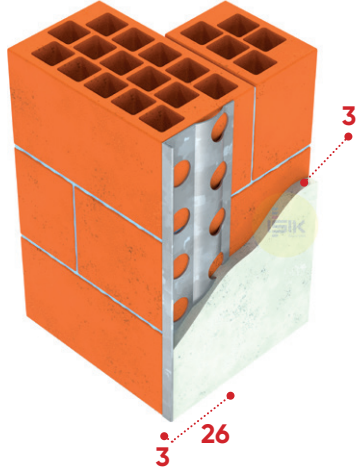
Galvanised Steel
Corner Bead
smooth surface

25x25 mm wings
Interior plaster | 3 mm plaster depth

Designed for use with one coat plaster work to a thin finish. Perforated wings to provide an excellent plastering key for slab, block work or rough surfaces, which need a thin coat finish.
*Please refer to "Materials" page in order to avoid any corrosion problem.



Article Number	Material Thickness	Standards	Lengths	Pack/Pallet
G10505505	0.50 mm Z275	EN 13658-1	250, 260, 270, 280, 300 cm	25pcs/100pep

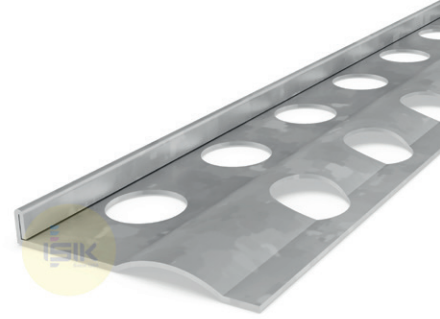


G1200

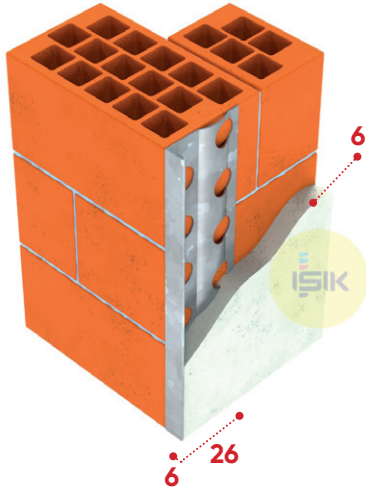
Galvanised Steel
Stop Bead
perforated

3x26 mm wings
Interior plaster | 3 mm plaster depth

Provides clean, neat edges at openings, abutment of walls and ceiling finishes.
*Please refer to "Materials" page in order to avoid any corrosion problem.



Article Number	Material Thickness	Standards	Lengths	Pack/Pallet
G12005500	0.50 mm Z275	EN 13658-1	250, 260, 270, 280, 300 cm	25pcs/140bun (G12005501: 50pcs / 70 cts)

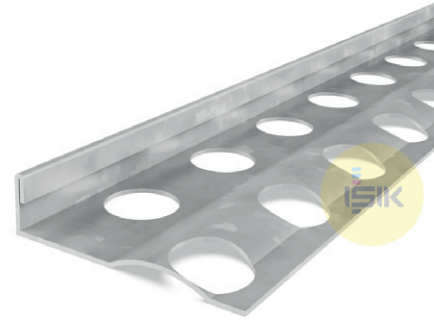


G1210

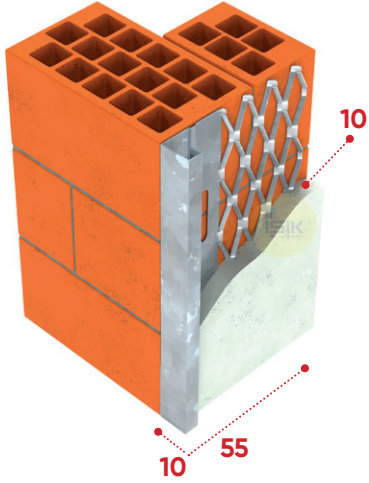
Galvanised Steel
Stop Bead
perforated

6x26 mm wings
Interior plaster | 6 mm plaster depth

G1210 provides clean, neat edges at openings, abutment of walls, and ceiling finishes.
*Please refer to "Materials" page in order to avoid any corrosion problem.



Article Number	Material Thickness	Standards	Lengths	Pack/Pallet
G12105500	0.50 mm Z275	EN 13658-1	250, 260, 270, 280, 300 cm	25pcs/100bun (G12105501: 50pcs / 50 cts)



G1220

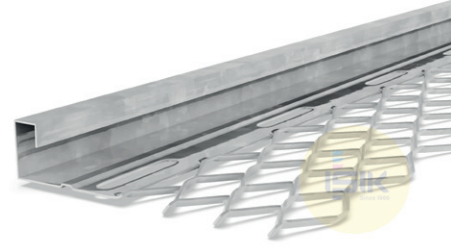
Galvanised Steel
Stop Bead
expanded wings

10x55 mm wings

Interior plaster | 10 mm plaster depth

Provides clean, neat edges at openings, abutment of walls and ceiling finishes.

*Please refer to "Materials" page in order to avoid any corrosion problem.



Article Number	Material Thickness	Standards	Lengths	Pack/Pallet
G12205500	0.50 mm Z275	EN 13658-1	250, 260, 270, 280, 300 cm	25pcs/72bun (G12205501: 50pcs / 35cts)



A1220

Aluminium Stop Bead

A12209601	0.60 mm	-	270, 300 cm	50pcs/35cts
-----------	---------	---	-------------	-------------



G1230

Galvanised Steel Stop Bead | 14 mm plaster depth

G12305500	0.50 mm Z275	EN 13658-1	250, 260, 270, 280, 300 cm	25pcs/72bun
-----------	-----------------	------------	----------------------------	-------------

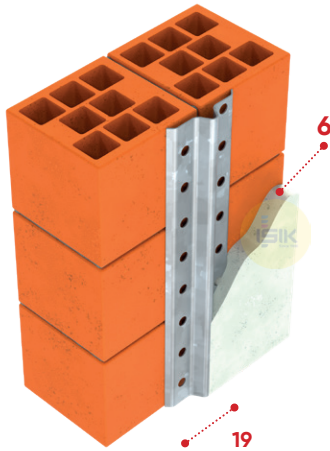
G1401

Galvanised Steel
Depth Gauge Bead
perforated

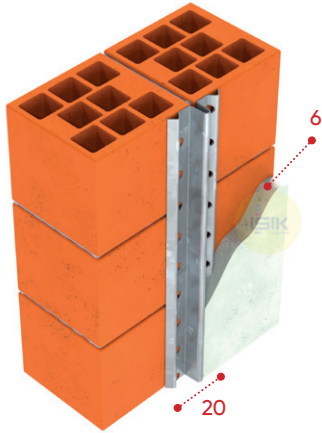
Interior plaster | 6 mm plaster depth

Flatness guide bead to create quick, exact and even plaster surfaces.

*Please refer to "Materials" page in order to avoid any corrosion problem.



Article Number	Material Thickness	Standards	Lengths	Pack/Pallet
G14011200	0.35 mm Z100	-	250, 260, 270, 280, 300	50pcs/100cts



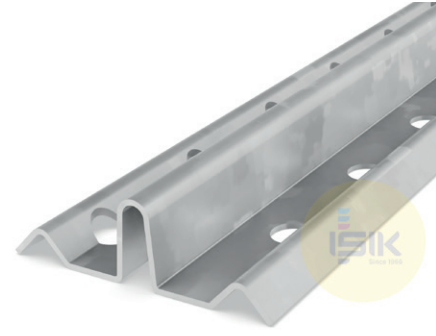
G1400

Galvanised Steel
Depth Gauge Bead
perforated

Interior plaster | 6 mm plaster depth

Flatness guide bead to create quick, exact and even plaster surfaces.

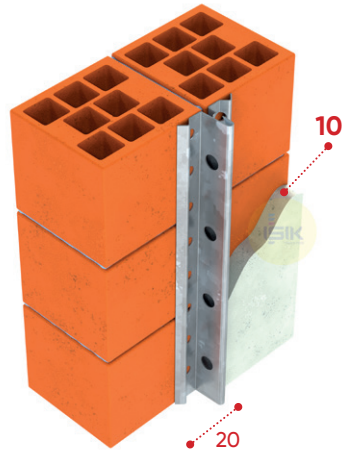
*Please refer to "Materials" page in order to avoid any corrosion problem.



Article Number	Material Thickness	Standards	Lengths	Pack/Pallet
G14005501	0.50 mm Z275	EN 13658-1	250, 260, 270, 280, 300	50pcs/80cts
G14001208	0.35 mm Z100	-	250, 260, 270, 280, 300	50pcs/80cts

A1400 | Aluminium Depth Gauge Bead

A14009201	0.35 mm	-	250, 260, 270, 280, 300	100pcs/60cts
-----------	---------	---	-------------------------	--------------



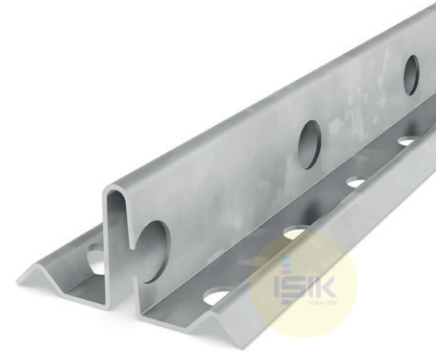
G1410

Galvanised Steel
Depth Gauge Bead
perforated

Interior plaster | 10 mm plaster depth

Flatness guide bead to create quick, exact and even plaster surfaces.

*Please refer to "Materials" page in order to avoid any corrosion problem.



Article Number	Material Thickness	Standards	Lengths	Pack/Pallet
G14105501	0.50 mm Z275	EN 13658-1	250, 260, 270, 280, 300	50pcs/60cts
G14101208	0.35 mm Z100	-	250, 260, 270, 280, 300	50pcs/60cts

A1410 | Aluminium Depth Gauge Bead

A14109201	0.35 mm	-	250, 260, 270, 280, 300	100pcs/32cts
-----------	---------	---	-------------------------	--------------

DRYLINING

Corner Beads

G4092	G4031
G4090	A4081
G4091	A4041
G4003	A4061
G4002	P4020
G4001	P4000
G1056	P4009
G4010	P4019
G4011	P4010
A4030	P4030
A4031	P4033

Stop Beads

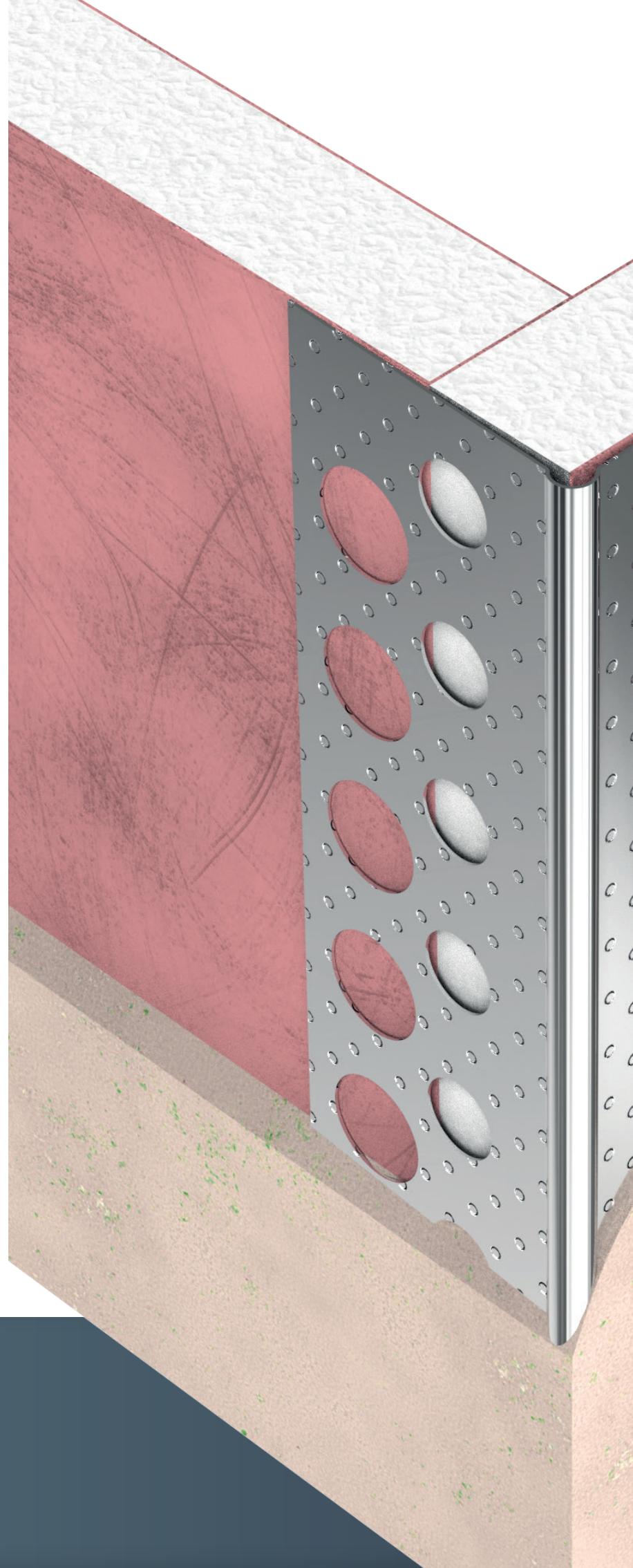
A4200

Edging Bead

G4210
A4210
G4211
G4220
G4221

G: Galvanised Steel | A: Aluminium

AZ: Aluminium-Zinc | P: PVCu



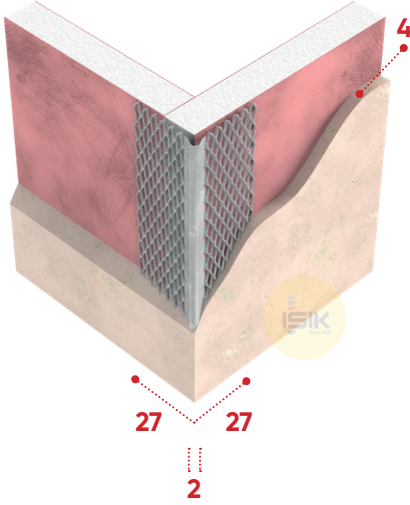
G4092

Galvanised Steel
Corner Bead
mini mesh

27x27 mm wings | 4 mm plaster depth
Dry lining | 2 mm round edge

Designed for use with one coat plasterwork to a thin finish. Fine mesh wings to provide an excellent plastering key for the slab, block work, or rough surfaces, which need a thin coat finish.

*Please refer to "Materials" page in order to avoid any corrosion problem.



Article Number	Material Thickness	Standards	Lengths	Pack/Pallet
G40925308	0.40 mm Z275	EN 14353	240, 270, 300 cm	50pcs/80cts
G40925307	0.40 mm Z275	EN 14353	240, 270, 300 cm	50pcs/80bun

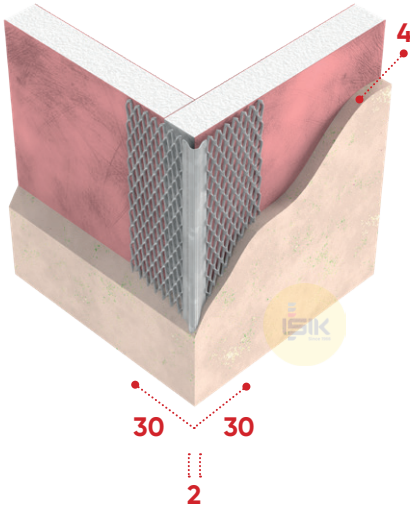
G4090

Galvanised Steel
Corner Bead
mini mesh

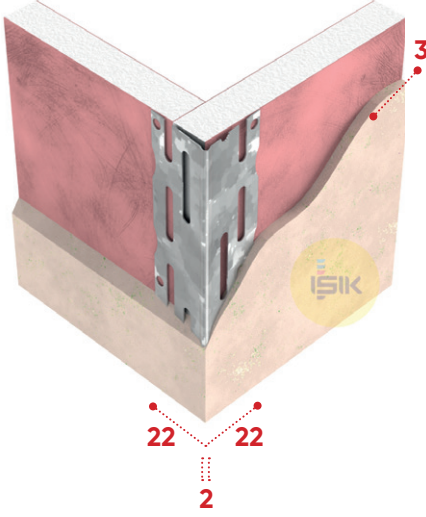
30x30 mm wings
Dry lining | 3 mm plaster depth

Designed for use with one coat plasterwork to a thin finish. Fine mesh wings to provide an excellent plastering key for the slab, block work, or rough surfaces, which need a thin coat finish.

*Please refer to "Materials" page in order to avoid any corrosion problem.



Article Number	Material Thickness	Standards	Lengths	Pack/Pallet
G40905508	0.50 mm Z275	EN 14353	240, 250, 260, 270, 300 cm	50pcs/100cts

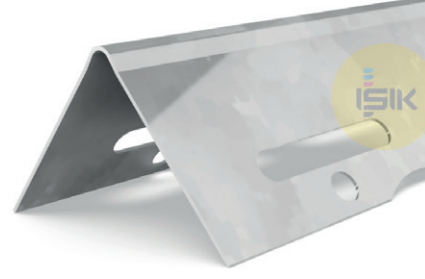


G4091

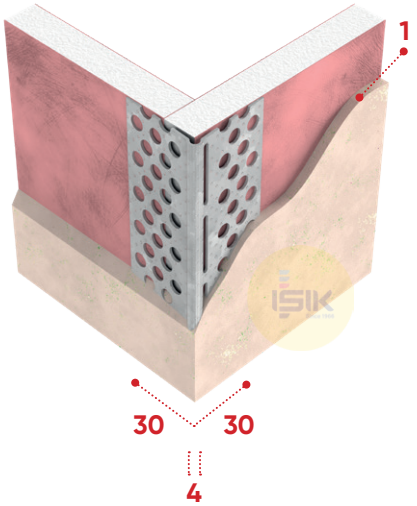
Galvanised Steel
Corner Bead
round edge

22x22 mm wings | 2-3 mm plaster depth
Dry lining | 2 mm round edge

Provides a high-quality finish and solid protection at drywall corners. Minimizes cracking at plasterboard edges. Fixing holes fit with standard plasterboard nails.



Article Number	Colour	Standards	Lengths	Pack/Pallet
G40915508	0.50 mm Z275	EN 14353	240, 270, 300 cm	50pcs/100cts
G40915308	0.40 mm Z275	EN 14353	240, 270, 300 cm	50pcs/100cts

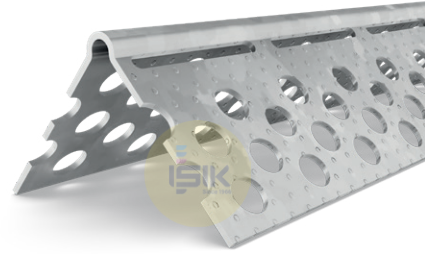


G4003

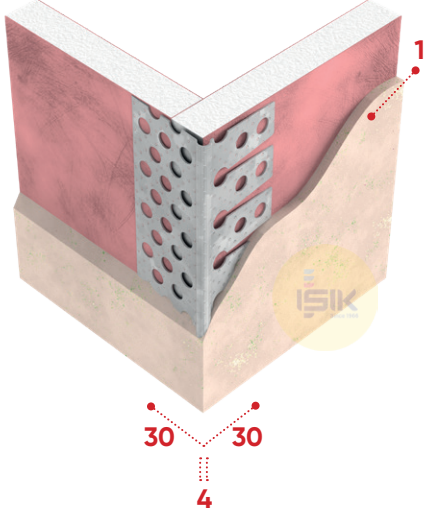
Galvanised Steel
Corner Bead
embossed surface

30x30 mm wings | 4 mm round edge
Dry lining | 1 mm plaster depth

Used to joint on drywall edges. Provides a high-quality finish and solid protection at drywall corners. Minimizes cracking at the plasterboard edges.



Article Number	Material Thickness	Standards	Lengths	Pack/Pallet
G40035505	0.50 mm Z275	EN 14353	200, 250, 260, 270, 275, 280, 300 cm	25 pcs/90 pep



G4002

Galvanised Steel
Corner Bead
embossed surface

30x30 mm wings | 4 mm round edge

Dry lining | 1 mm plaster depth

Used to joint on drywall edges. Provides a high-quality finish and solid protection at drywall corners. Minimizes cracking at the plasterboard edges.



Article Number	Colour	Standards	Lengths	Pack/Pallet
G40025505	0.50 mm Z275	EN 14353	200, 250, 260 270, 275, 280, 300 cm	25 pcs/90 pep

G4001

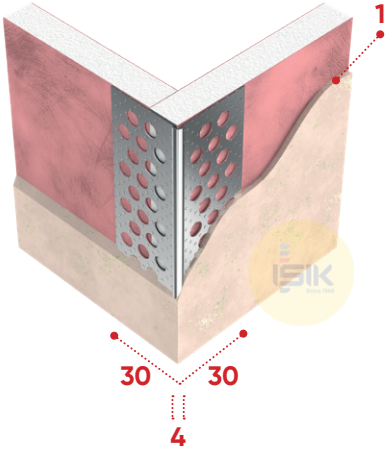
Galvanised Steel
Corner Bead
embossed surface

30x30 mm wings | 4 mm round edge.

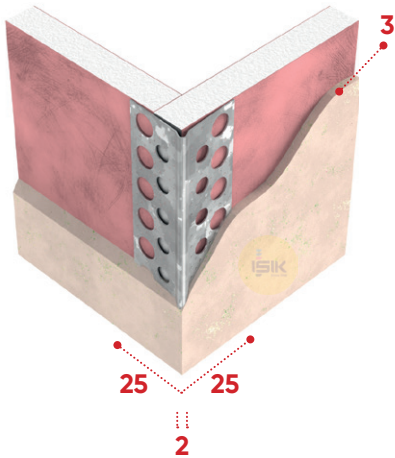
Dry lining | 1 mm plaster depth

Used to joint on drywall edges. Provides a high-quality finish and solid protection at drywall corners. Minimizes cracking at the plasterboard edges.

*Please refer to "Materials" page in order to avoid any corrosion problem.



Article Number	Material Thickness	Standards	Lengths	Pack/Pallet
G40015505	0.50 mm Z275	EN 14353	200, 250, 260, 270, 275, 280, 300 cm	25 pcs/90 pep
G40011305	0.40 mm Z100	EN 14353	200, 250, 260, 270, 275, 280, 300 cm	25 pcs/90 pep



G1056

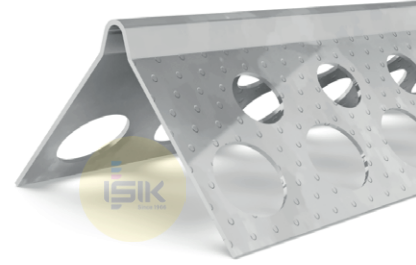
Galvanised Steel
Corner Bead
embossed surface

25x25 mm wings

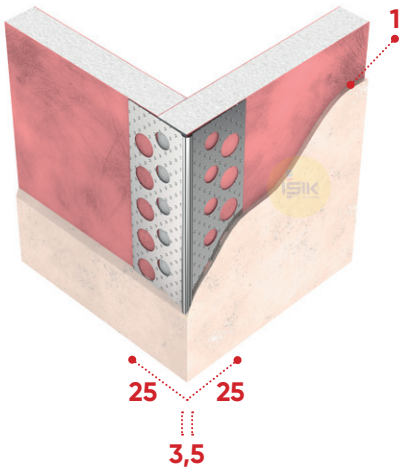
Dry lining | 1-3 mm plaster depth

Provides a high-quality finish and solid protection at drywall corners.
Minimizes cracking at plasterboard edges.

*Please refer to "Materials" page in order to avoid any corrosion problem.



Article Number	Material Thickness	Standards	Lengths	Pack/Pallet
G10565505	0.50 mm Z275	EN 14353	250, 260, 270, 280, 300 cm	25pcs/100pep



G4010

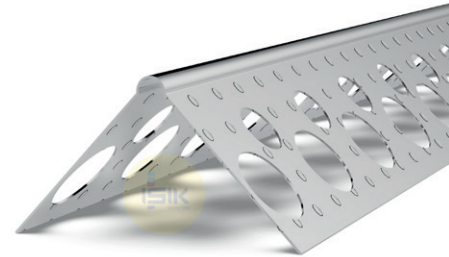
Galvanised Steel
Corner Bead
smooth surface

25x25 mm wings

Dry lining | 1 mm plaster depth

Used to joint on drywall edges. Provides a high-quality finish and solid protection at drywall corners. Minimizes cracking at the plasterboard edges.

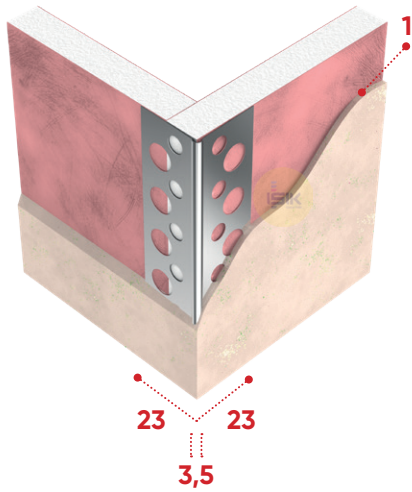
*Please refer to "Materials" page in order to avoid any corrosion problem.



Article Number	Material Thickness	Standards	Lengths	Pack/Pallet
G40105500	0.50 mm Z275	EN 14353	200, 250, 260, 270, 275, 280, 300 cm	25pcs/100bun (G40105505: 50 pcs /50pep)
G40101200	0.35 mm Z100	EN 14353	200, 250, 260, 270, 275, 280, 300 cm	25pcs/100bun (G40101205: 50pcs /50pep)

⊕ G4011 Galvanised Steel Corner Bead embossed surface

G40115505	0.50 mm Z275	EN 14353	200, 250, 260, 270, 275, 280, 300 cm	50pcs/50 pep
G40111205	0.35 mm Z100	EN 14353	200, 250, 260, 270, 275, 280, 300 cm	50 pcs/50 pep



A4030

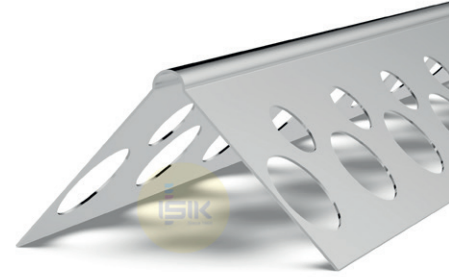
Aluminium Natural
Corner Bead
smooth surface

23x23 mm wings

Dry lining | 1 mm plaster depth

Used to joint on drywall edges. Provides a high-quality finish and solid protection at drywall corners. Minimizes cracking at the plasterboard edges.

*Please refer to "Materials" page in order to avoid any corrosion problem.



Article Number	Material Thickness	Standards	Lengths	Pack/Pallet	
A40309200	0.35 mm	-	200, 250, 260, 270, 275, 280, 300 cm	50pcs/160bun	(A40309201: 100pcs / 80cts) (A40309202: 200pcs / 40cts) (A40309205: 200pcs / 150 pep)
A40309100	0.30 mm	-	200, 250, 260, 270, 275, 280, 300 cm	50pcs/160bun	(A40309101: 100pcs / 80cts) (A40309102: 200pcs / 40cts) (A40309105: 50pcs / 150 pep)



A4031

Aluminium Natural embossed surface

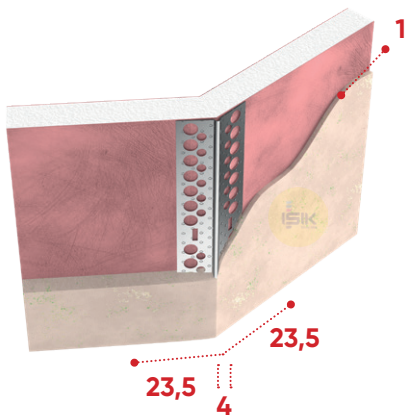
A40319200	0.35 mm	-	200, 250, 260, 270, 275, 280, 300 cm	50pcs/160bun	(A40319201: 100pcs / 80cts) (A40319202: 200pcs / 40cts) (A40319205: 50pcs / 50pep)
A40319100	0.30 mm	-	200, 250, 260, 270, 275, 280, 300 cm	50pcs/160bun	(A40319101: 100pcs / 80cts) (A40319102: 200pcs / 40cts) (A40319105: 50pcs / 150 pep)



G4031

Galvanised Steel embossed surface

G40311200	0.35 mm Z100	EN 14353	250, 260, 270, 280, 300 cm	50pcs/160bun	(G40311201: 100pcs / 80cts)
-----------	-----------------	----------	----------------------------	--------------	-----------------------------



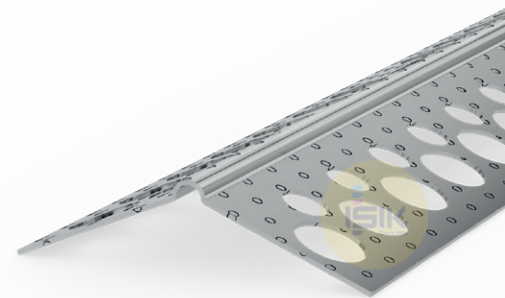
A4081

Aluminium
Corner Bead
embossed surface

23,5x23,5 mm wings | 135° round edge

Dry lining | 1 mm plaster depth

Bends to create curved and arched forms in thin coat and dry lining applications.



Article Number	Material Thickness	Standards	Lengths	Pack/Pallet
A40819202	0.35 mm	-	200, 250, 260, 270, 275, 280, 300 cm	150pcs/60cts

A4041

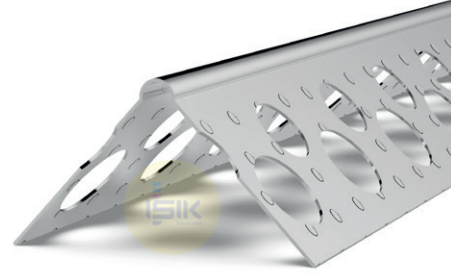
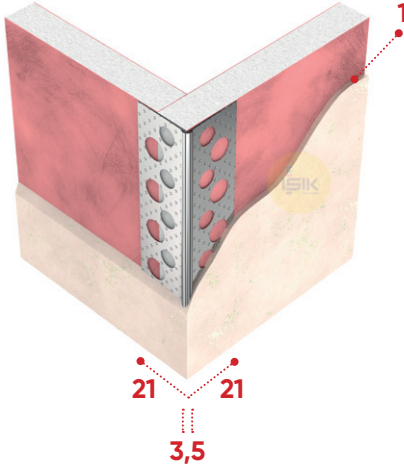
Aluminium Natural
Corner Bead
embossed surface

21x21 mm wings

Dry lining | 1 mm plaster depth

Used to joint on drywall edges. Provides a high-quality finish and solid protection at drywall corners. Minimizes cracking at the plasterboard edges.

*Please refer to "Materials" page in order to avoid any corrosion problem.



Article Number	Material Thickness	Standards	Lengths	Pack/Pallet	
A40419100	0.30 mm	-	200, 250, 260, 270, 275, 280, 300 cm	50pcs /160bun	(A40419101: 100pcs / 80cts) (A40419102: 200pcs / 40cts) (A40419105: 50pcs /150 pep)

A4061

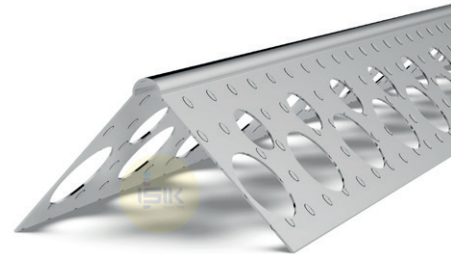
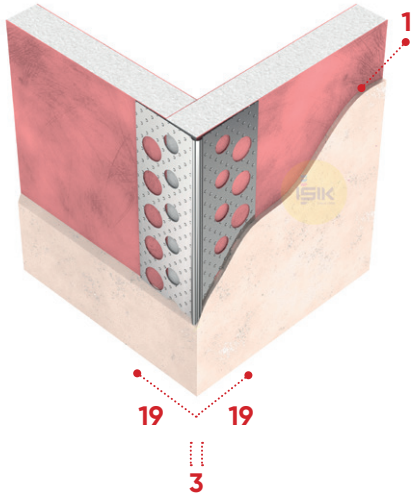
Aluminium Natural
Corner Bead
embossed surface

19x19 mm wings

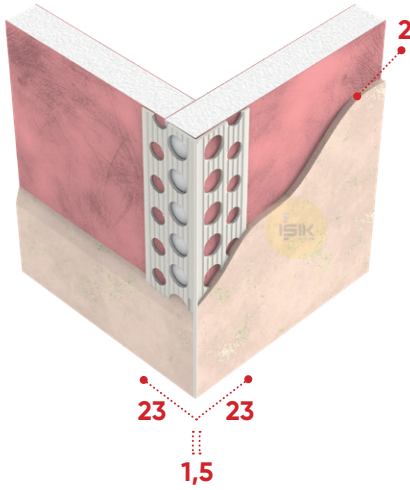
Dry lining | 1 mm plaster depth

Used to joint on drywall edges. Provides a high-quality finish and solid protection at drywall corners. Minimizes cracking at the plasterboard edges.

*Please refer to "Materials" page in order to avoid any corrosion problem.



Article Number	Material Thickness	Standards	Lengths	Pack/Pallet	
A40619000	0.28 mm	-	200, 250, 260, 270, 275, 280, 300 cm	50pcs/160bun	(A40619001: 100pcs / 80cts) (A40619002: 200pcs / 40cts) (A40619005: 50pcs / 150 pep)



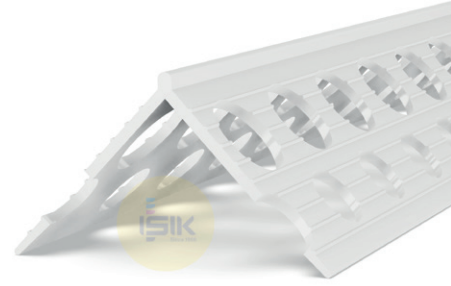
P4020

PVCu
Corner Bead
perfect edge

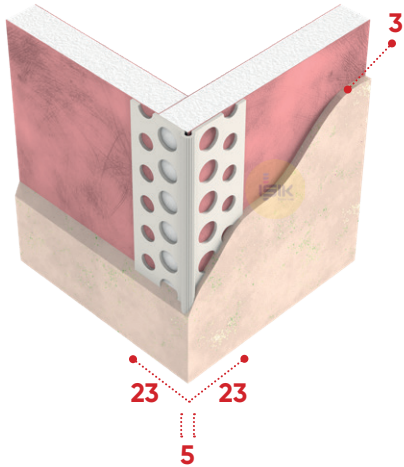
23x23 mm wings | 60 g/m weight

Dry lining | 2 mm plaster depth

Provides a clean and true corner for drywall edges. Protects and reinforces against cracking.



Article Number	Colour	Lengths	Pack/Pallet
P402000W1	White	250, 260, 270, 280, 300 cm	200pcs/20cts



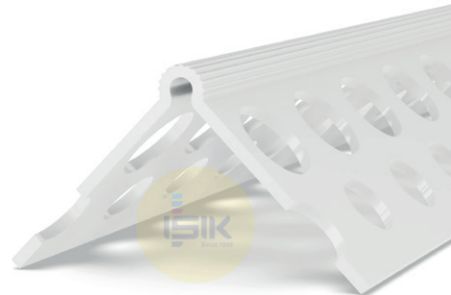
P4000

PVCu
Corner Bead
round edge

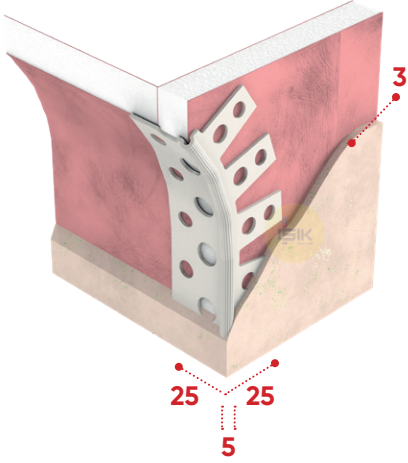
23x23 mm wings | 55 g/m weight

Dry lining | 3 mm plaster depth

Provides a clean and true corner for drywall edges. Protects and reinforces against cracking.



Article Number	Colour	Lengths	Pack/Pallet
P400000W0	White	250, 260, 270, 275, 280, 300 cm	100pcs/200fbg (P400000W8: 100pcs / 75 cts)

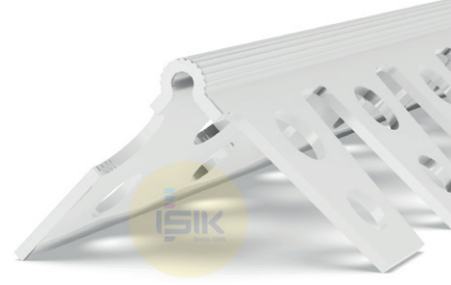


P4009

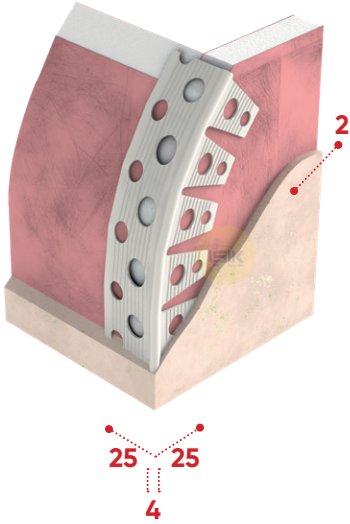
PVCu
Arch Bead
round edge

25x25 mm wings | 55 g/m weight
Dry lining | 3 mm plaster depth

Bends to create curved and arched forms in thin coat and dry lining applications.



Article Number	Colour	Lengths	Pack/Pallet
P400900W0	White	250, 260, 270, 275, 280, 300 cm	100pcs/200 fbg (P400900W8: 100pcs / 75cts)



P4019

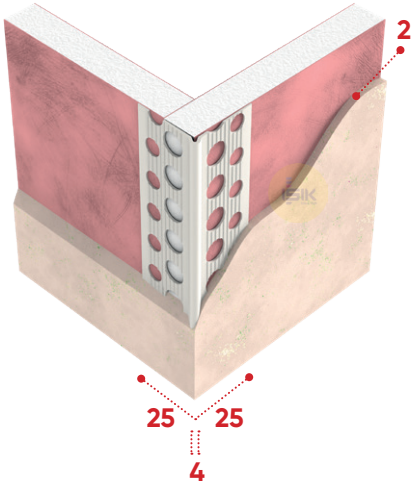
PVCu
Arch Bead
round edge

25x25 mm wings | 55 g/m weight
Dry lining | 2 mm plaster depth

Bends to create ceiling edges along curved walls in dry lining applications.



Article Number	Colour	Lengths	Pack/Pallet
P401900W8	White	250, 260, 270, 275, 280, 300 cm	100pcs/40cts (P401900W7 : 100pcs / 200fbg)

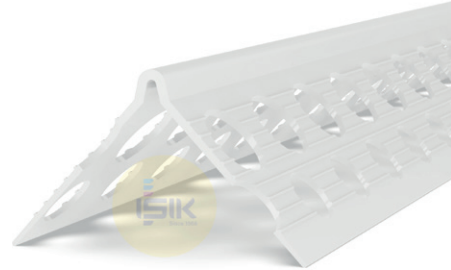


P4010

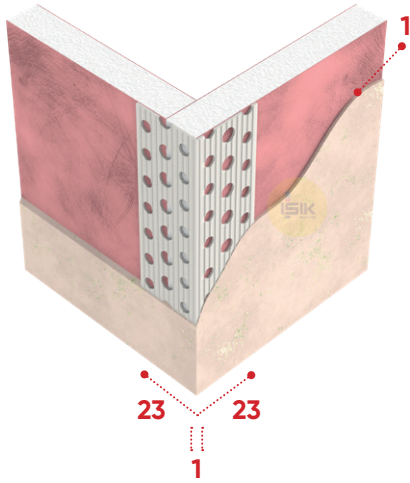
PVCu
Corner Bead
round edge

25x25 mm wings | 55 g/m weight
Dry lining | 2 mm plaster depth

Provides a clean and true corner for drywall edges. Protects and reinforces against cracking.



Article Number	Colour	Lengths	Pack/Pallet
P401000W8	White	250, 260, 270, 275, 280, 300 cm	100pcs/40cts



P4030

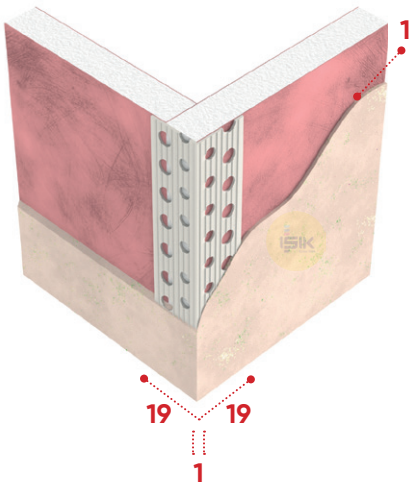
PVCu
Corner Bead
sharp edge

23x23 mm wings | 55 g/m weight
Dry lining | 1 mm plaster depth

Provides clean, true and sharp corners for drywall edges.
Protects and reinforces against cracking.



Article Number	Colour	Lengths	Pack/Pallet
P40300W0	White	250, 260, 270, 275, 280, 300 cm	100pcs/200fbg



P4033

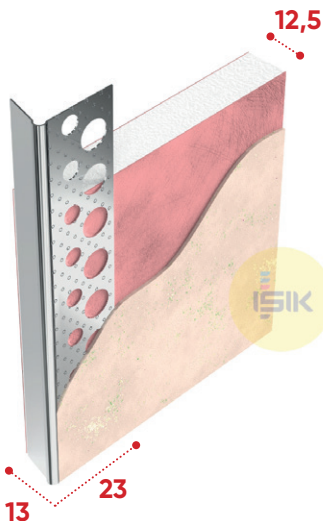
PVCu
Corner Bead
sharp edge

19x19 mm wings | 39 g/m weight
Dry lining | 1 mm plaster depth

Provides clean, true and sharp corners for drywall edges.
Protects and reinforces against cracking.



Article Number	Lengths	Pack/Pallet
P403300W0	250, 260, 270, 275, 280, 300 cm	100pcs/200fbg

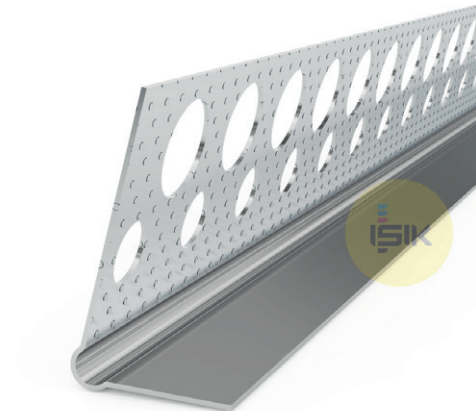


A4200

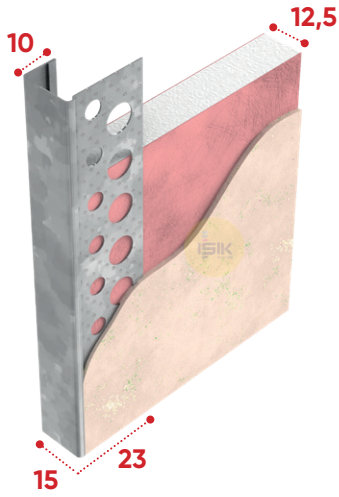
Aluminium
Stop Bead
embossed surface

13x23 mm wings | 12,5mm plasterboard
Dry lining | 1 mm plaster depth

Used to form single edges at plastered junctions,
eg. sliding ceiling and wall connections.



Article Number	Material Thickness	Standards	Lengths	Pack/Pallet
A42009202	0.35 mm	EN 14353	240, 250, 270, 300 cm	100pcs/50cts

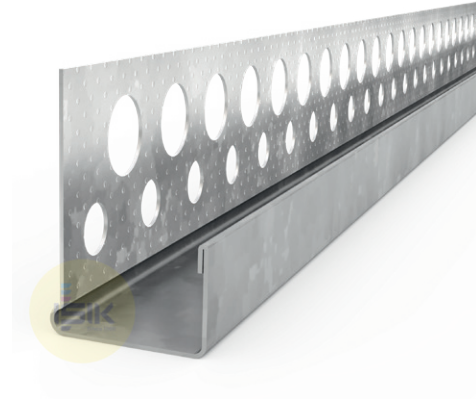


G4210

Galvanised Steel
Edging Bead
embossed surface

15x23 mm wings | 12,5 mm plasterboard
Dry lining | 1 mm plaster depth

Provides reinforcement for plasterboard edges by enclosing them in a protective section.
*Please refer to "Materials" page in order to avoid any corrosion problem.



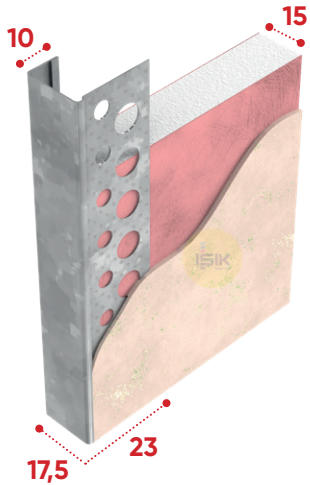
Article Number	Material Thickness	Standards	Lengths	Pack/Pallet
G42101301	0.40 mm Z100	EN 14353	240, 250, 270, 300 cm	48pcs/59cts



A4210

Aluminium Natural embossed surface

A42109301	0.40mm	EN 14353	240, 250, 270, 300 cm	48pcs/50cts
-----------	--------	----------	-----------------------	-------------

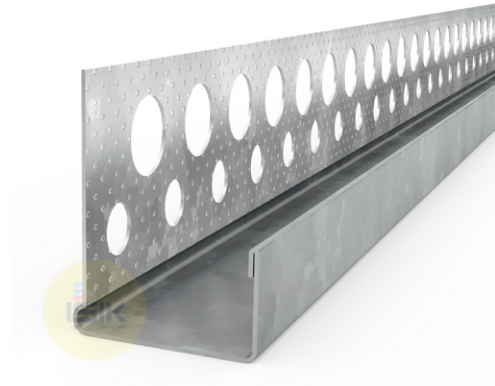


G4211

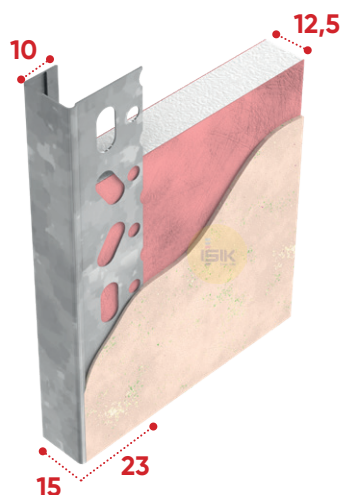
Galvanised Steel
Edging Bead
embossed surface

17,5x23 mm wings | 15 mm plasterboard
Dry lining | 1 mm plaster depth

Provides reinforcement for plasterboard edges by enclosing them in a protective section.
*Please refer to "Materials" page in order to avoid any corrosion problem.



Article Number	Material Thickness	Standards	Lengths	Pack/Pallet
G42111301	0.40 mm Z100	EN 14353	240, 250, 270, 300 cm	48pcs/59cts



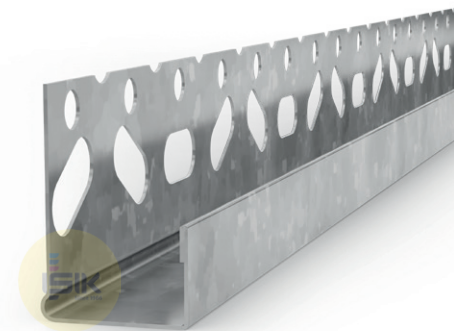
G4220

Galvanised Steel
Edging Bead
embossed surface

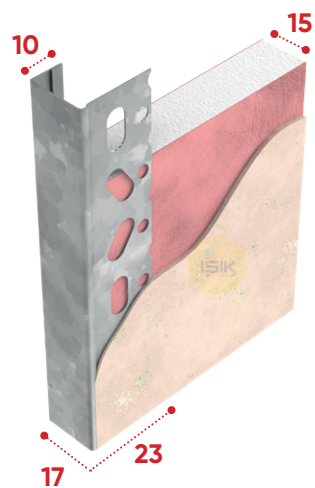
15x23 mm wings | 12,5 mm plasterboard

Dry lining | 1 mm plaster depth

Provides reinforcement for plasterboard edges by enclosing them in a protective section.



Article Number	Material Thickness	Standards	Lengths	Pack/Pallet
G42201308	0.40 mm Z100	EN 14353	240, 250, 270, 300 cm	50pcs/60cts



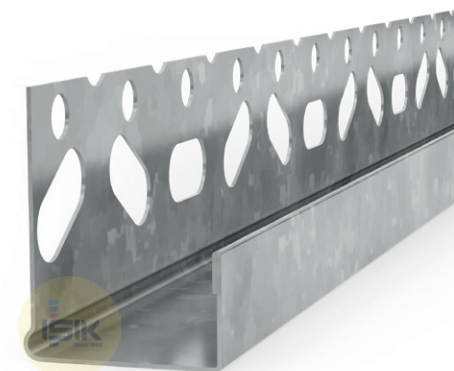
G4221

Galvanised Steel
Edging Bead
embossed surface

17x23 mm wings | 15 mm plasterboard

Dry lining | 1 mm plaster depth

Provides reinforcement for plasterboard edges by enclosing them in a protective section.



Article Number	Material Thickness	Standards	Lengths	Pack/Pallet
G42211308	0.40 mm Z100	EN 14353	240, 250, 270, 300 cm	50pcs/60cts

EXTERNAL THERMAL INSULATION SYSTEMS

Corner Beads with Mesh

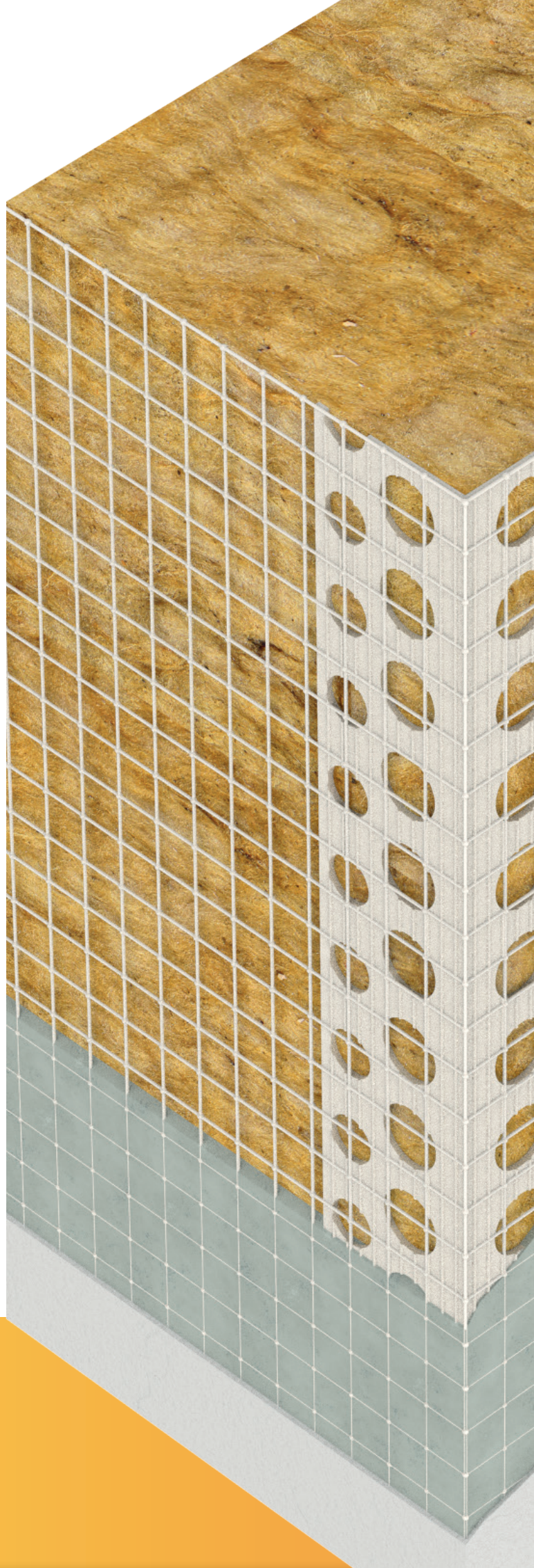
PE145

PC110

PA145

AC110

A: Aluminium | P: PVCu



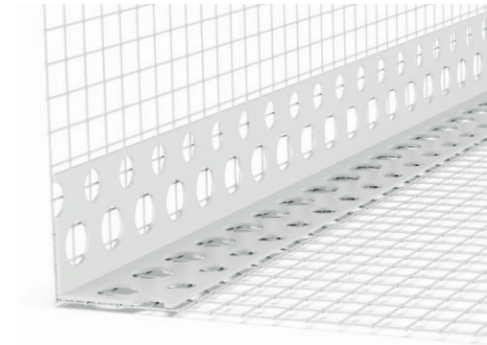


PE145

PVCu
Corner Bead
with mesh

ETAG 004 certificated | 145 g/m² glass fibre mesh
ETICS-EIFS-EWI

Protects and reinforces the corners of the insulation boards.
The profile to create exact edges in thermal insulation systems.
The mesh to ensure that there are no cracks in the render.



Article Number	Corner Bead Wing(LxR)	Profile weight	Mesh Colour	Mesh Width(axb)	Lengths	Pack/Pallet
PE14551W1	22x22 mm	51 ± 2 g/m	White	10x30 cm	200, 250, 300 cm	50pcs/50cts
PE14552W8	22x22 mm	51 ± 2 g/m	White	10x23 cm	200, 250, 300 cm	50pcs/28cts
PE14553W8	22x22 mm	51 ± 2 g/m	White	10x15 cm	200, 250, 300 cm	50pcs/36 cts
PE14554W8	22x22 mm	51 ± 2 g/m	White	10x10 cm	200, 250, 300 cm	50pcs/42 cts
PE14555W8	22x22 mm	51 ± 2 g/m	White	8x12 cm	200, 250, 300 cm	50pcs/42cts



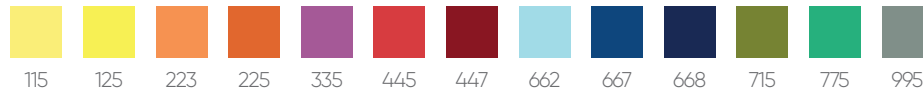
Certificated



Customize Logo Print



For other mesh color options
MOQ 90.000 meters

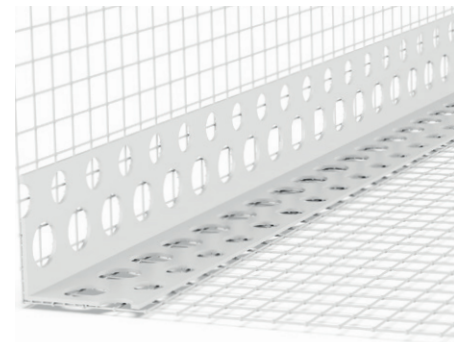


PC110

PVCu
Corner Bead
with mesh

110 g/m² glass fibre mesh
ETICS-EIFS-EWI

Protects and reinforces the corners of the insulation boards.
The profile to create exact edges in thermal insulation systems.
The mesh to ensure that there are no cracks in the render.



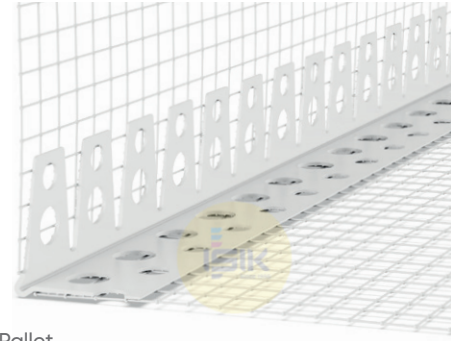
Article Number	Corner Bead Wing(LxR)	Profile weight	Mesh Colour	Mesh Width(axb)	Lengths	Pack/Pallet
PC11044W8	23x23 mm	55 g/m	White	10x10 cm	200, 250, 300 cm	50pcs/64cts
PC11044T1	23x23 mm	55 g/m	White	10x10 cm	200, 250, 300 cm	50pcs/110 fbg
PC11084T1	19x19 mm	39 g/m	White	10x10 cm	200, 250, 300 cm	50pcs/115 fbg
PC11044W1	23x23 mm	55 g/m	White	10x10 cm	200, 250, 300 cm	50pcs/110 fbg
PC11045W8	23x23 mm	55 g/m	White	8x12 cm	200, 250, 300 cm	50pcs/64cts
PC11084W1	19x19 mm	39 g/m	White	10x10 cm	200, 250, 300 cm	50pcs/115 fbg

PA145

PVCu
Arch Bead
with mesh

ETAG 004 certificated | 145 g/m² glass fibre mesh
ETICS-EIFS-EWI

Protects and reinforces the arch corners of the insulation boards.



Article Number	Corner Bead Wing(LxR)	Profile weight	Mesh Colour	Mesh Width(axb)	Lengths	Pack/Pallet
PA14533W8	25x25 mm	55 g/m	White	10x15 cm	200, 250, 300 cm	50pcs/28cts
PA14534W8	25x25 mm	55 g/m	White	10x10 cm	200, 250, 300 cm	50pcs/50cts



Certificated



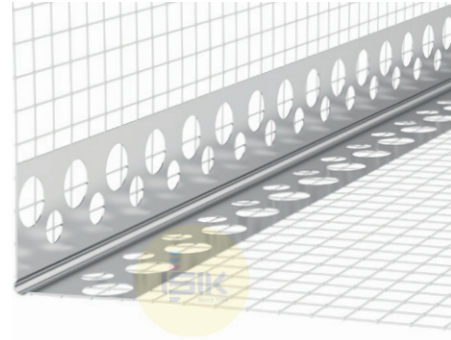
Logo Print

AC110

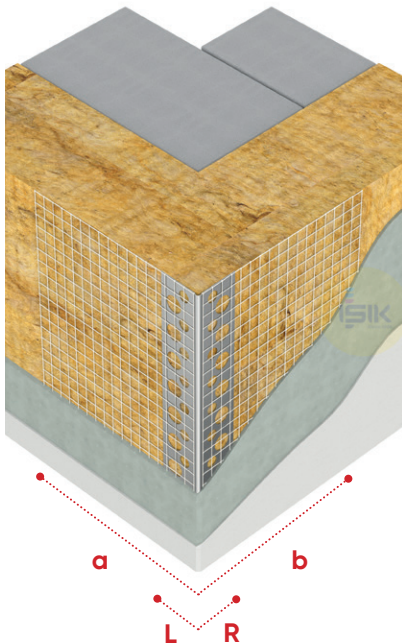
Aluminium
Corner Bead
with mesh

110 g/m² glass fibre mesh
ETICS-EIFS-EWI

Protects and reinforces the corners of the insulation boards.
The profile to create exact edges in thermal insulation systems.
The mesh to ensure that there are no cracks in the render.



Article Number	Corner Bead Wing(LxR)	Mesh Colour	Mesh Width(axb)	Lengths	Pack/Pallet
AC11090T7	19x19x0.28 mm	Orange	10x10 cm	50 pcs	50pcs/110fbg



- İŞİK guarantees, within general business terms, the proper material quality and the careful manufacture of the profiles.
- No responsibility or liability is accepted for errors or information that is found to be misleading. Suggestions, descriptions and application advises are only for information and İŞİK accepts no liability in respect thereof.
- Because the composition and the chemical and physical properties of the plasters applied are out of our control, no guarantee can be accepted for the resistance of the profiles against corrosion. The compatibility of the plaster with the profiles must be ensured.
- Varying factors in the application of plaster make it necessary to adapt to the individual working conditions from case to case. This is the responsibility of the buyer. The term of guarantee for plaster profiles is six months, in compliance with the legal regulations on sales contracts, and begins on the date of delivery.
- Practical tests are the safest way to avoid possible mistakes, for which no guarantee can be given. Corrosion can only occur if the plasters are under permanent influence of humidity or if they dry too slowly. Make sure the plaster dries quickly by airing well.
- Storage and application instructions must always be observed and followed.
- Metal corrosion is caused by chlorides, carbon dioxide or a combination of moisture and oxygen.
This can lead to the following different types of corrosion:

Type of Corrosion	Apperance	Cause
General corrosion	Brown	Steel with no protective coating exposed to the air
Pitting corrosion	Brown/white	Effect of corrosion stimulators (e.g.chlorides) on metals, including stainless steel.
Contact corrosion	Brown/white	Contact between two different metals causing the less noble one to corrode.
White rust	White	Corrosion of aluminium.
Rust film	Orange/ brown	Incipient surface corrosion in a thin layer. Often caused by moisture during storage or use.
Crevice corrosion	Brown	Caused by crevices in the metal surface.
Interlayer corrosion	Detachment of surface layer	Corrosion in the contact and surface layer,adhesion zone between metal surface and surface layer. Caused by corrosive behaviour of surface layer.

This image shows a single sheet of white paper with horizontal ruling lines. The lines are evenly spaced and run across the width of the page. There are no margins, text, or other markings on the paper.

This image shows a single sheet of white paper with horizontal ruling lines. The lines are evenly spaced and run across the width of the page. There are no margins, text, or other markings on the paper.



IŞIK PERDE RAYLARI SAN. ve TİC. AŞ.

Gebze Plastikçiler Organize Sanayi Bölgesi

Atatürk Bulvarı 11. Cad. No:9

41400 **Gebze, Kocaeli | TURKEY**

T: +90 262 502 1660

www.isikgroup.com

isikgroup@isikgroup.com

IŞIK reserves the right to change information contained within this brochure at any time.

V.03.3