

TECHNICAL DATA SHEET

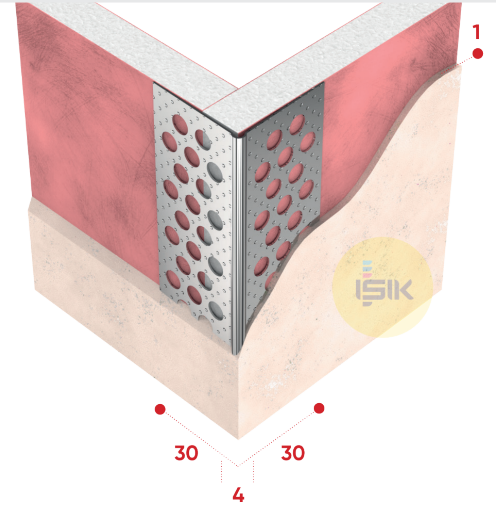
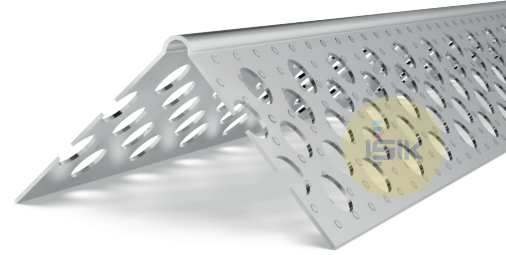


Document No: TDS.A4001-95

Revision No: 00

A4001 Corner Bead

■ Product Range	Dry Lining
■ Application	Gypsum Plaster
■ Product Type	Corner Bead Embossed Surface
■ Plaster Thickness	1 mm
■ Material	Aluminium Natural
■ Material Thickness	0,50 mm
■ Wings / Length	30x30 mm
■ Standards	EN 14353
■ Reaction to Fire	Class A1
■ DOP Reference	DOP.A4001
■ Length Options	200, 250, 260, 270, 275, 280, 300 cm
■ Art Nr.	A40019505
■ Packaging	25 pcs/pep



Remarks:

This technical data sheet replaces all previous versions. Işık reserves the right to modify products without prior notice. Please rely on the application assembly and storage guidelines.



MANUFACTURER:

Gebze Plastikçiler OSB, Atatürk Bulvarı 11.
Cad. No:9 Gebze 41400, Kocaeli - Türkiye
T: +90 262 502 16 60
isikgroup.com