

TECHNICAL DATA SHEET



Document No: TDS.A4020

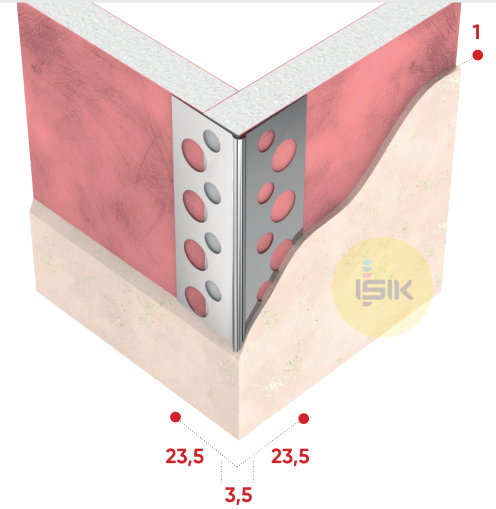
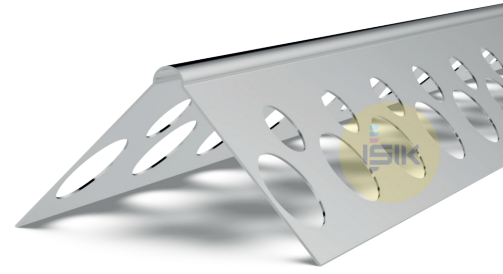
Revision No: 00

A4020 Corner Bead

■ Product Range	Dry Lining
■ Application	Gypsum Plaster
■ Product Type	Corner Bead Smooth Surface
■ Plaster Thickness	1 mm
■ Material	Aluminium Natural
■ Material Thickness	0,40 mm
■ Wings / Length	23,5x23,5 mm
■ Standards	EN 14353
■ Reaction to Fire	Class A1
■ DOP Reference	DOP.GA020
■ Length Options	200, 250, 260, 270, 275, 280, 300 cm
■ Art Nr.	A40209300 A40209301 A40209301 A40209305
■ Packaging	50 pcs/bun 100 pcs/cts 200 pcs/cts 50 pcs/pep

Remarks:

This technical data sheet replaces all previous versions. Işık reserves the right to modify products without prior notice. Please rely on the application assembly and storage guidelines.



MANUFACTURER:

Gebze Plastikçiler OSB, Atatürk Bulvarı 11.
Cad. No:9 Gebze 41400, Kocaeli - Türkiye
T: +90 262 502 16 60
isikgroup.com