

# TECHNICAL DATA SHEET



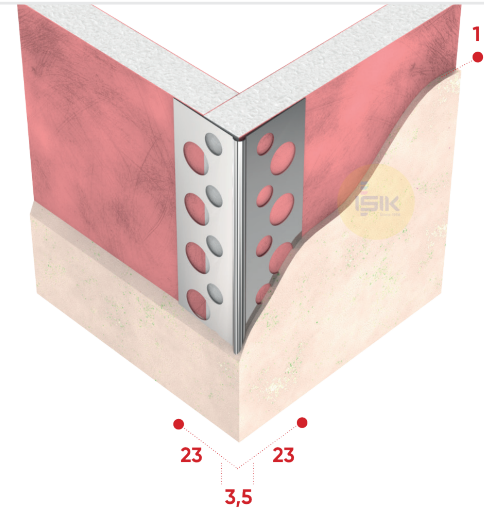
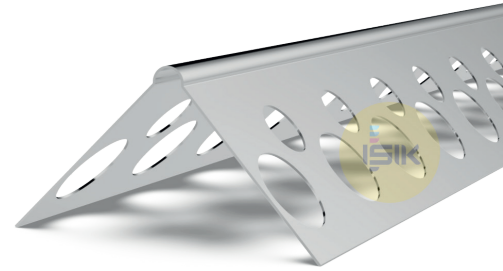
Document No: TDS.A4030-92  
Revision No: 00

## A4030 Corner Bead

■ Product Range	Dry Lining
■ Application	Gypsum Plaster
■ Product Type	Corner Bead Smooth Surface
■ Plaster Thickness	1 mm
■ Material	Aluminium Natural
■ Material Thickness	0,35 mm
■ Wings / Length	23x23 mm
■ Reaction to Fire	Class A1
■ Length Options	200, 250, 260, 270, 275, 280, 300 cm
■ Art Nr.	A40309200 A40309201 A40309202 A40309205
■ Packaging	50 pcs/bun 100 pcs/cts 200 pcs/cts 50 pcs/pep

### Remarks:

This technical data sheet replaces all previous versions. Işık reserves the right to modify products without prior notice. Please rely on the application assembly and storage guidelines.



**MANUFACTURER:**  
Gebze Plastikçiler OSB, Atatürk Bulvarı 11.  
Cad. No:9 Gebze 41400, Kocaeli - Türkiye  
T: +90 262 502 16 60  
isikgroup.com