

# TECHNICAL DATA SHEET

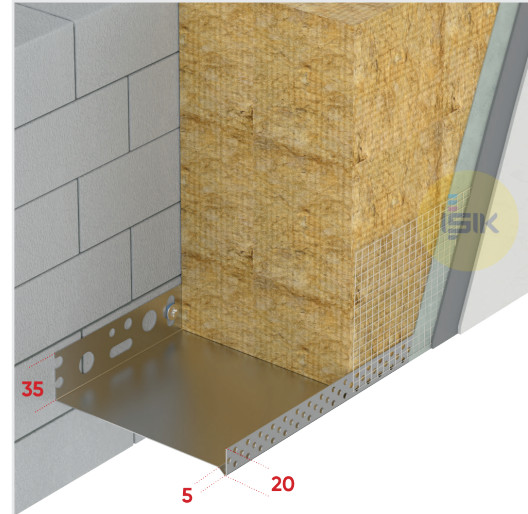
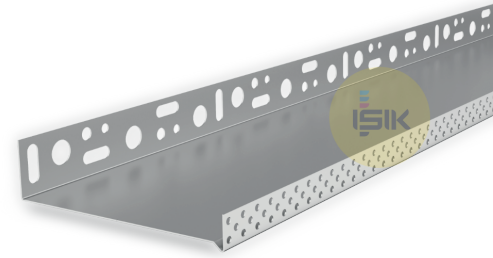


Document No: TDS.A6320-1

Revision No: 00

## A6320 Base Profile

|                      |                             |
|----------------------|-----------------------------|
| ■ Product Range      | Base Starter Profile        |
| ■ Applications       | External Thermal Insulation |
| ■ Material           | Natural Aluminium           |
| ■ Profile Wings      | 35x20 mm                    |
| ■ Width              | 203 mm                      |
| ■ Material Thickness | 0,80 mm                     |
| ■ Reaction to Fire   | Class A1                    |
| ■ Length Options     | 250 cm                      |
| ■ Art No.            | A63209910250                |
| ■ Packaging          | 10 pcs/bun                  |
| ■ Complies to        | CPT 3035                    |



### Remarks:

This technical data sheet replaces all previous versions. Işık reserves the right to modify products without prior notice. Please rely on the application assembly and storage guidelines.



### MANUFACTURER:

Gebze Plastikçiler OSB, Atatürk Bulvarı 11.  
Cad. No:9 Gebze 41400, Kocaeli - Türkiye  
T: +90 262 502 16 60  
isikgroup.com