

TECHNICAL DATA SHEET



Document No: TDS.G1410-12

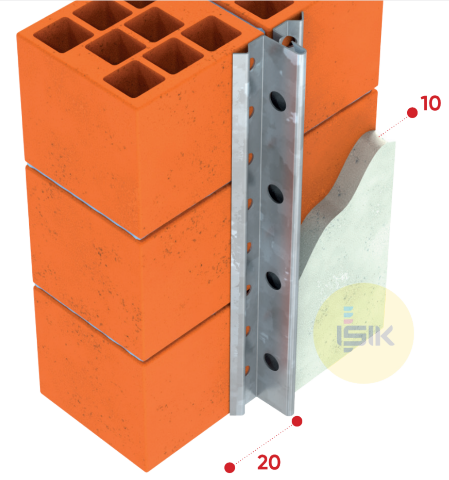
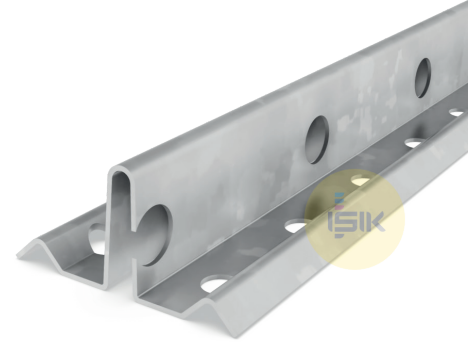
Revision No: 00

G1410 Depth Gauge Bead

| | |
|---------------------------|---|
| ■ Product Range | Plaster Profiles |
| ■ Applications | Interior Plaster |
| ■ Product Type | Depth Gauge Bead Perforated |
| ■ Plaster Thickness | 10 mm |
| ■ Material | Galvanized Sheet Steel DX51D+Z to EN 10142 |
| ■ Coating /Finish /Colour | 100 g/m ² Zinc Coating |
| ■ Material Thickness | 0,35 mm |
| ■ Wings /Length | 20 mm |
| ■ Reaction to Fire | Class A1 |
| ■ Length Options | 220, 250, 260, 270, 275, 280, 300 cm |
| ■ Art Nr. | G14101208 |
| ■ Packaging | 50 pcs/cts |

Remarks:

This technical data sheet replaces all previous versions. Işık reserves the right to modify products without prior notice. Please rely on the application assembly and storage guidelines.



MANUFACTURER:

Gebze Plastikçiler OSB, Atatürk Bulvarı 11.
Cad. No:9 Gebze 41400, Kocaeli - Türkiye
T: +90 262 502 16 60
isikgroup.com