

# TECHNICAL DATA SHEET



Document No: TDS.G4001-13

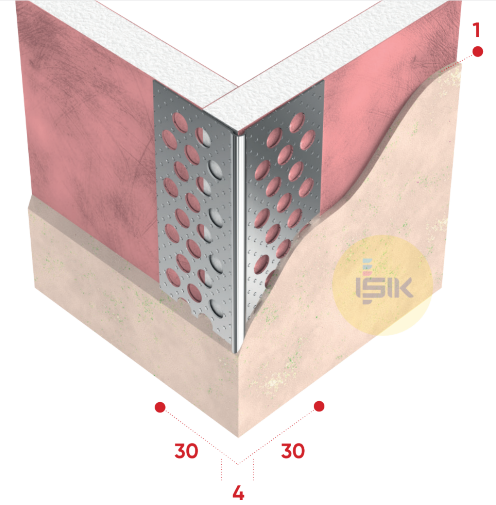
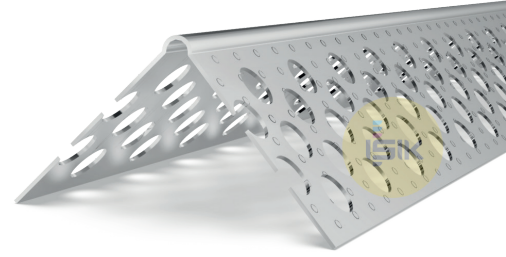
Revision No: 00

## G4001 Corner Bead

■ Product Range	Dry Lining
■ Applications	Gypsum Plaster
■ Product Type	Corner Bead Embossed Surface
■ Plaster Thickness	1 mm
■ Material	Galvanized Sheet Steel DX51D+Z to EN 10142
■ Coating /Finish /Colour	100 g/m <sup>2</sup> Zinc Coating
■ Material Thickness	0,40 mm
■ Wings /Length	30x30 mm
■ Standards	EN 14353
■ Reaction to Fire	Class A1
■ DOP Reference	DOP.G4001
■ Length Options	200, 250, 260, 270, 275, 280, 300 cm
■ Art Nr.	G40011305
■ Packaging	25 pcs/pep

### Remarks:

This technical data sheet replaces all previous versions. Işık reserves the right to modify products without prior notice. Please rely on the application assembly and storage guidelines.



### MANUFACTURER:

Gebze Plastikçiler OSB, Atatürk Bulvarı 11.  
Cad. No:9 Gebze 41400, Kocaeli - Türkiye  
T: +90 262 502 16 60  
isikgroup.com