

TECHNICAL DATA SHEET



Document No: TDS.G4210

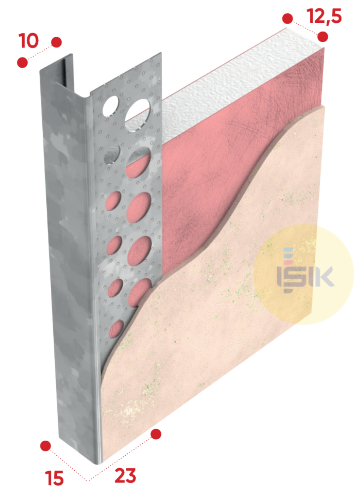
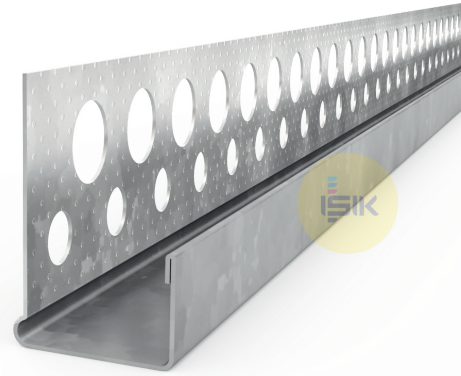
Revision No: 00

G4210 Edging Bead J

| | |
|---------------------------|---|
| ■ Product Range | Dry Lining |
| ■ Applications | Gypsum Plaster |
| ■ Product Type | Edging Bead J Embossed Surface |
| ■ Plaster Thickness | 1 mm |
| ■ Plasterboard Thickness | 12,5 mm |
| ■ Material | Galvanized Sheet Steel DX51D+Z to EN 10142 |
| ■ Coating /Finish /Colour | 100 g/m ² Zinc Coating |
| ■ Material Thickness | 0,40 mm |
| ■ Wings /Length | 15x23 mm |
| ■ Standards | EN 14353 |
| ■ Reaction to Fire | Class A1 |
| ■ DOP Reference | DOP.G4210 |
| ■ Length Options | 240, 250, 270, 300 cm |
| ■ Art Nr. | G42101301 |
| ■ Packaging | 48 pcs/cts |

Remarks:

This technical data sheet replaces all previous versions. Işık reserves the right to modify products without prior notice. Please rely on the application assembly and storage guidelines.



MANUFACTURER:

Gebze Plastikçiler OSB, Atatürk Bulvarı 11.
Cad. No:9 Gebze 41400, Kocaeli - Türkiye
T: +90 262 502 16 60
isikgroup.com