

TECHNICAL DATA SHEET



Document No: TDS.G4211

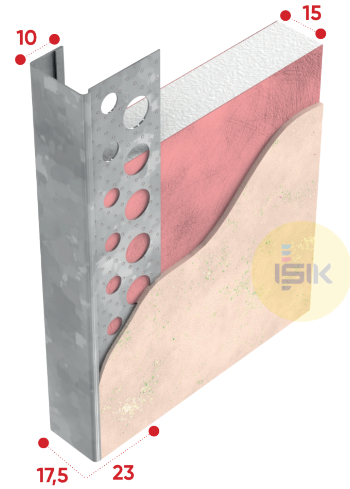
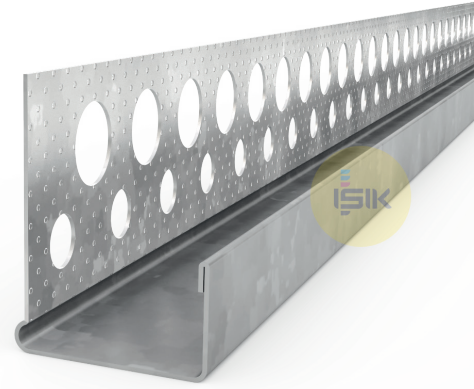
Revision No: 00

G4211 Edging Bead J

■ Product Range	Dry Lining
■ Applications	Gypsum Plaster
■ Product Type	Edging Bead J Embossed Surface
■ Plaster Thickness	1 mm
■ Plasterboard Thickness	15 mm
■ Material	Galvanized Sheet Steel DX51D+Z to EN 10142
■ Coating /Finish /Colour	100 g/m ² Zinc Coating
■ Material Thickness	0,40 mm
■ Wings /Length	17,5x23 mm
■ Standards	EN 14353
■ Reaction to Fire	Class A1
■ DOP Reference	DOP.G4211
■ Length Options	240, 250, 270, 300 cm
■ Art Nr.	G42111301
■ Packaging	48 pcs/cts

Remarks:

This technical data sheet replaces all previous versions. Işık reserves the right to modify products without prior notice. Please rely on the application assembly and storage guidelines.



MANUFACTURER:

Gebze Plastikçiler OSB, Atatürk Bulvarı 11.
Cad. No:9 Gebze 41400, Kocaeli - Türkiye
T: +90 262 502 16 60
isikgroup.com