

# TECHNICAL DATA SHEET



Document No: TDS.G4220

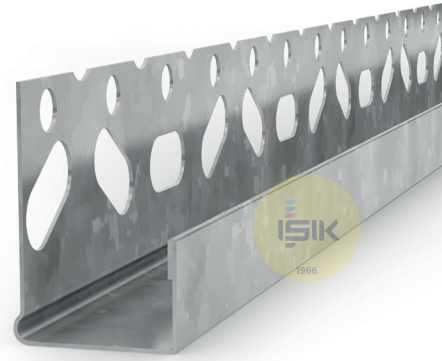
Revision No: 00

## G4220 Edging Bead J

■ Product Range	Dry Lining
■ Applications	Gypsum Plaster
■ Product Type	Edging Bead J Embossed Surface
■ Plaster Thickness	1 mm
■ Plasterboard Thickness	12,5 mm
■ Material	Galvanized Sheet Steel DX51D+Z to EN 10142
■ Coating /Finish /Colour	100 g /m <sup>2</sup> Zinc Coating
■ Material Thickness	0,40 mm
■ Wings /Length	15x23 mm
■ Standards	EN 14353
■ Reaction to Fire	Class A1
■ DOP Reference	DOP.G4220
■ Length Options	300 cm
■ Art No.	G42201308
■ Packaging	50 pcs/cts

### Remarks:

This technical data sheet replaces all previous versions. Işık reserves the right to modify products without prior notice. Please rely on the application assembly and storage guidelines.



### MANUFACTURER:

Gebze Plastikçiler OSB, Atatürk Bulvarı 11.  
Cad. No:9 Gebze 41400, Kocaeli - Türkiye  
T: +90 262 502 16 60  
isikgroup.com