

TECHNICAL DATA SHEET



Document No: TDS.P1042

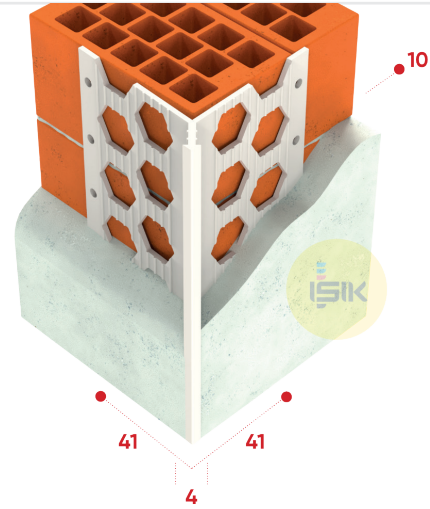
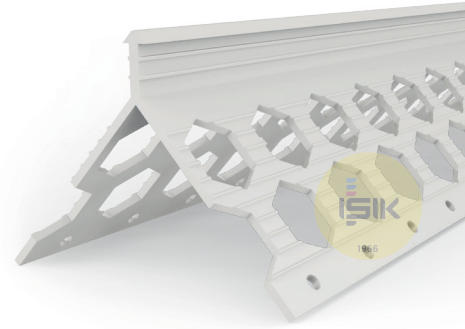
Revision No: 00

P1042 Corner Bead

■ Product Range	Plaster Profiles
■ Applications	Interior- Exterior Plaster
■ Product Type	Corner Bead Visible Round Edge
■ Plaster Thickness	10 mm
■ Visible Nose	4 mm
■ Material	PVCu
■ Material Color	White
■ Material Weight	175± 5 g/m
■ Wings /Length	41x41 mm
■ Reaction to Fire	Class E
■ Length Options	280, 300 cm
■ Art No.	P104200W8
■ Packaging	25 pcs/cts

Remarks:

This technical data sheet replaces all previous versions. Işık reserves the right to modify products without prior notice. Please rely on the application assembly and storage guidelines.



MANUFACTURER:

Gebze Plastikçiler OSB, Atatürk Bulvarı 11.
Cad. No:9 Gebze 41400, Kocaeli - Türkiye
T: +90 262 502 16 60
isikgroup.com