



Technical Data Sheet

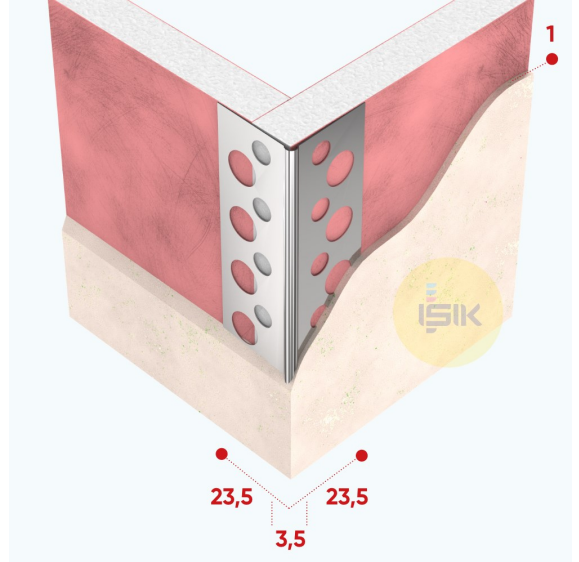
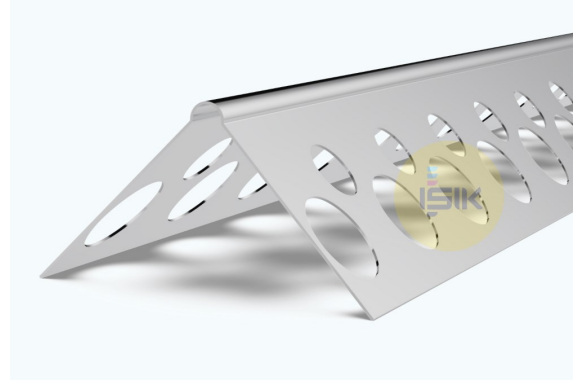
Document No: TDS.A4020

Revision No: 00

Page : 1 of 1

A4020 Corner Bead

Product Range	Dry Lining
Applications	Gypsum Plaster
Product Type	Corner Bead Smooth Surface
Plaster Thickness	1 mm
Material	Aluminium Natural
Material Thickness	0,40 mm
Wings /Length	23,5x23,5 mm
Standards	EN 14353
Reaction to Fire	Class A1
DOP Reference	DOP.GA020
Length Options	200, 250, 260, 270, 275, 280, 300 cm



Art Nr.	Packaging
A40209300	50 pcs/ bun
A40209301	100 pcs/ cts
A40209302	200 pcs/ cts
A40209305	50 pcs/ pep



Remarks:

This technical data sheet replaces all previous versions. Işık reserves the right to modify products without prior notice. please rely on the application assembly and storage guidelines.

IŞIK

Perde Rayları

San. ve Tic. A.Ş.

Gebze Plastikçiler OSB

11. Cadde No: 9

Gebze / KOCAELİ

Tel: +90 262 502 16 60

Fax: +90 262 502 16 61

isikgroup@isikgroup.com