



Technical Data Sheet

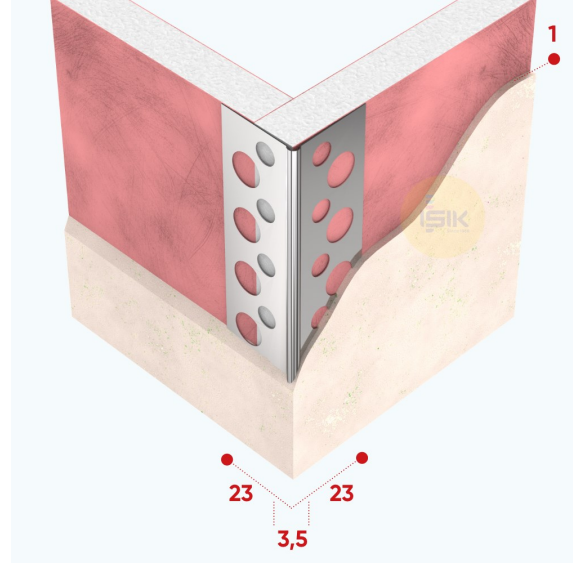
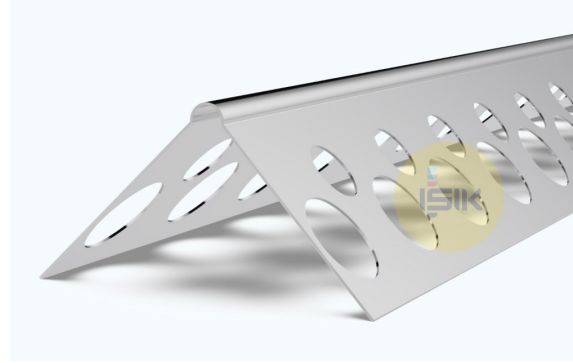
Document No: TDS.A4030-92

Revision No: 00

Page : 1 of 1

A4030 Corner Bead

Product Range	Dry Lining
Applications	Gypsum Plaster
Product Type	Corner Bead Smooth Surface
Plaster Thickness	1 mm
Material	Aluminium Natural
Material Thickness	0,35 mm
Wings /Length	23x23 mm
Reaction to Fire	Class A1
Length Options	200, 250, 260, 270, 275, 280, 300 cm



Art Nr.	Packaging
A40309200	50 pcs/ bun
A40309201	100 pcs/ cts
A40309202	200 pcs/ cts
A40309205	50 pcs/ pep



Remarks:

This technical data sheet replaces all previous versions. Işık reserves the right to modify products without prior notice. please rely on the application assembly and storage guidelines.

IŞIK

Perde Rayları

San. ve Tic. A.Ş.

Gebze Plastikçiler OSB

11. Cadde No: 9

Gebze / KOCAELİ

Tel: +90 262 502 16 60

Fax: +90 262 502 16 61

isikgroup@isikgroup.com